

# Treasured Notions

## Quilt



5x7 6x10 7x12

Sweet Pea  
MACHINE EMBROIDERY

## TREASURED NOTIONS QUILT BOM 2022: ASSEMBLY OF THE QUILT

*There are no final dimensions included for this quilt design as it is intended for you to make your quilt as how you would like it. Please keep in mind that our quilt is a sample size only.*

### WORKING OUT FABRIC REQUIREMENTS

**BLOCKS** - Work out how many blocks you are having in your quilt. Then multiply it by how much background fabric is required for your size block. You can use this method to also calculate the other fabrics in each block.

**BACKING** - The size will depend upon how big you intend to make your quilt.

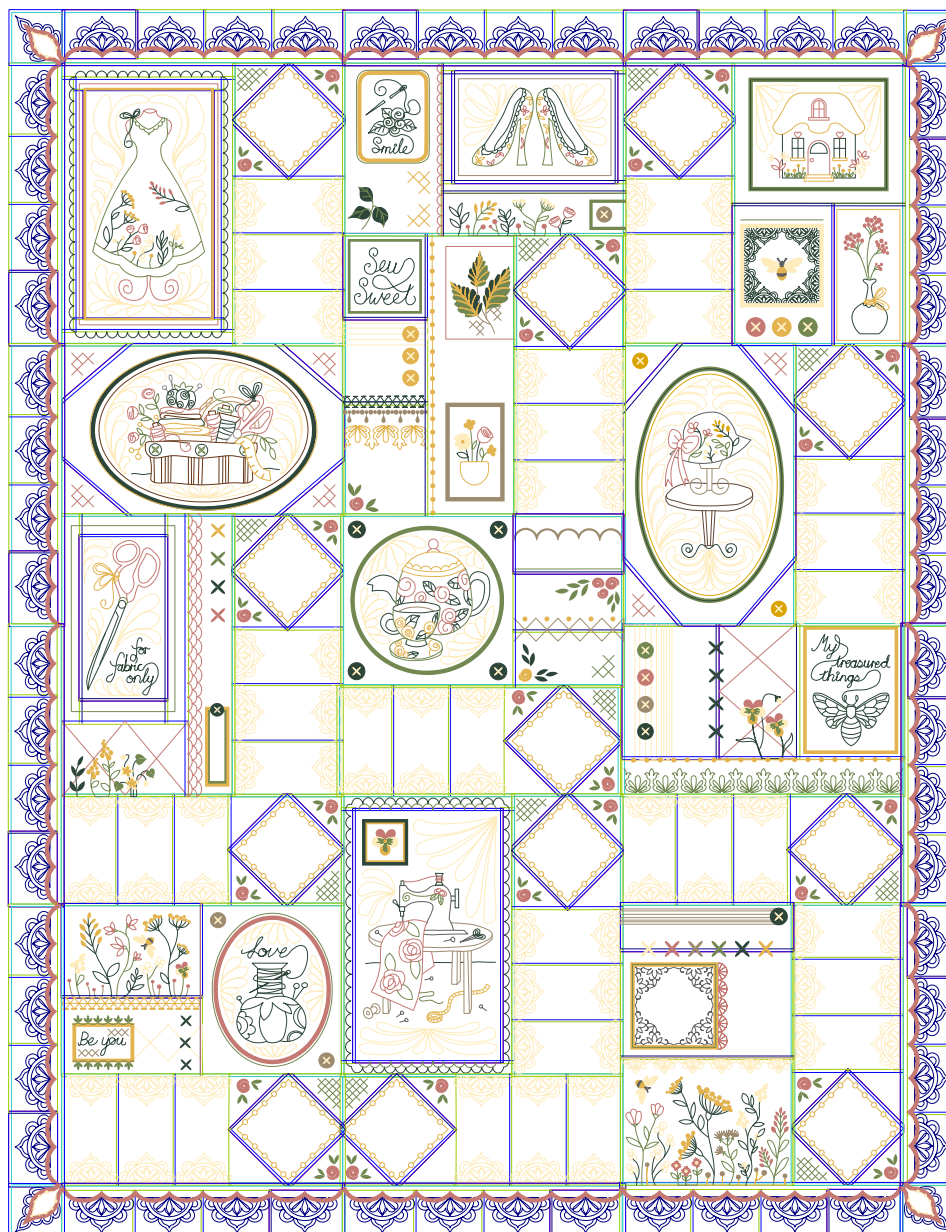
To calculate, use your hoop size and multiply that by the number of blocks you are having.

### USING YOUR REGULAR SEWING MACHINE:

#### JOINING THE BLOCKS

Lay out your blocks on a flat surface and decide on your layout.

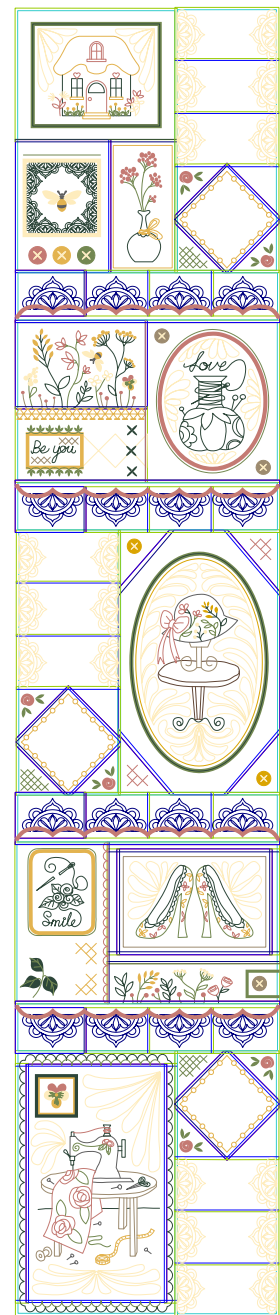
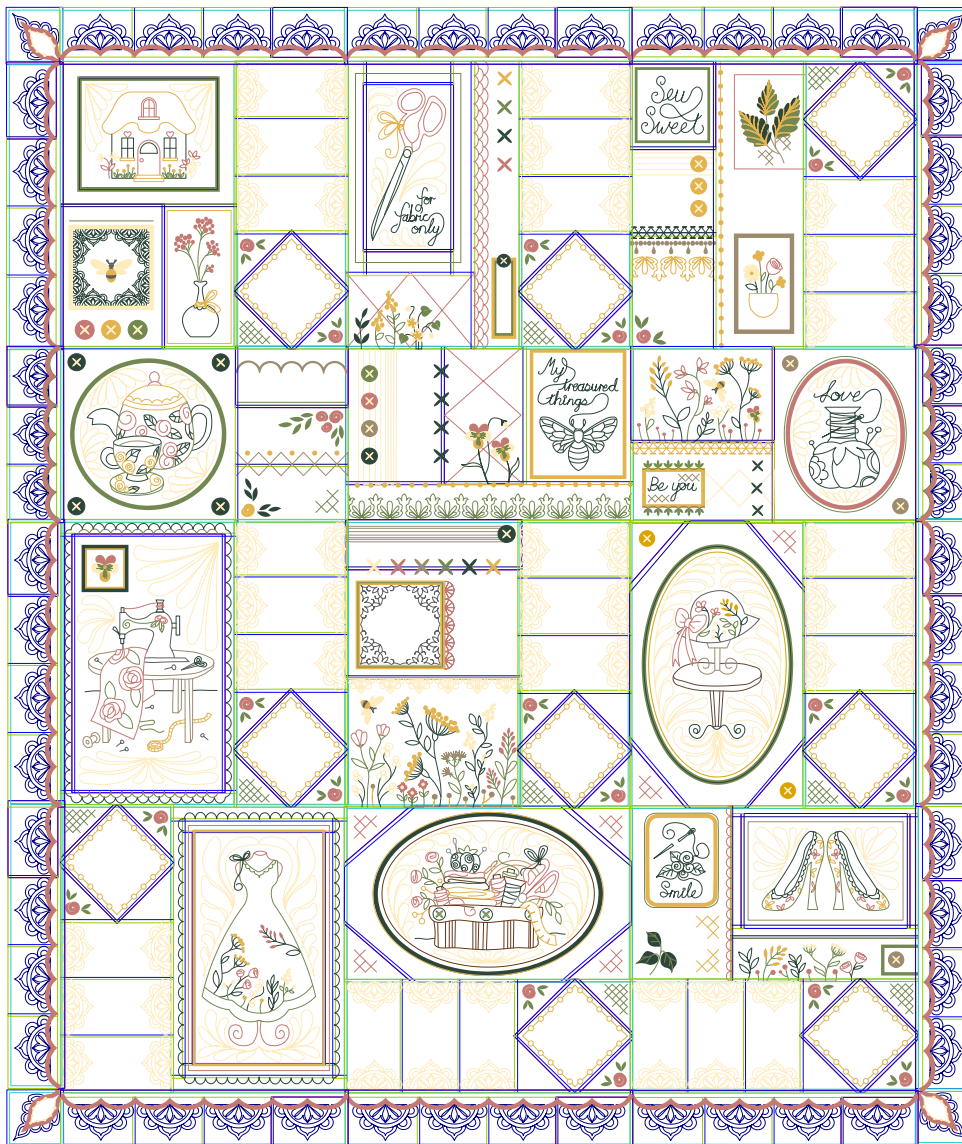
This is the layout we chose – We used 12 x Filler Blocks, 14 x Long Border Blocks, 4 x Corner Blocks (1 hooping), and 1 of each of the big main blocks.



The only block we did not use in our layout was the short border block. You could make double of each block and make a bigger quilt. Play around with different layouts and find one you like.



### Smaller Quilt Layout

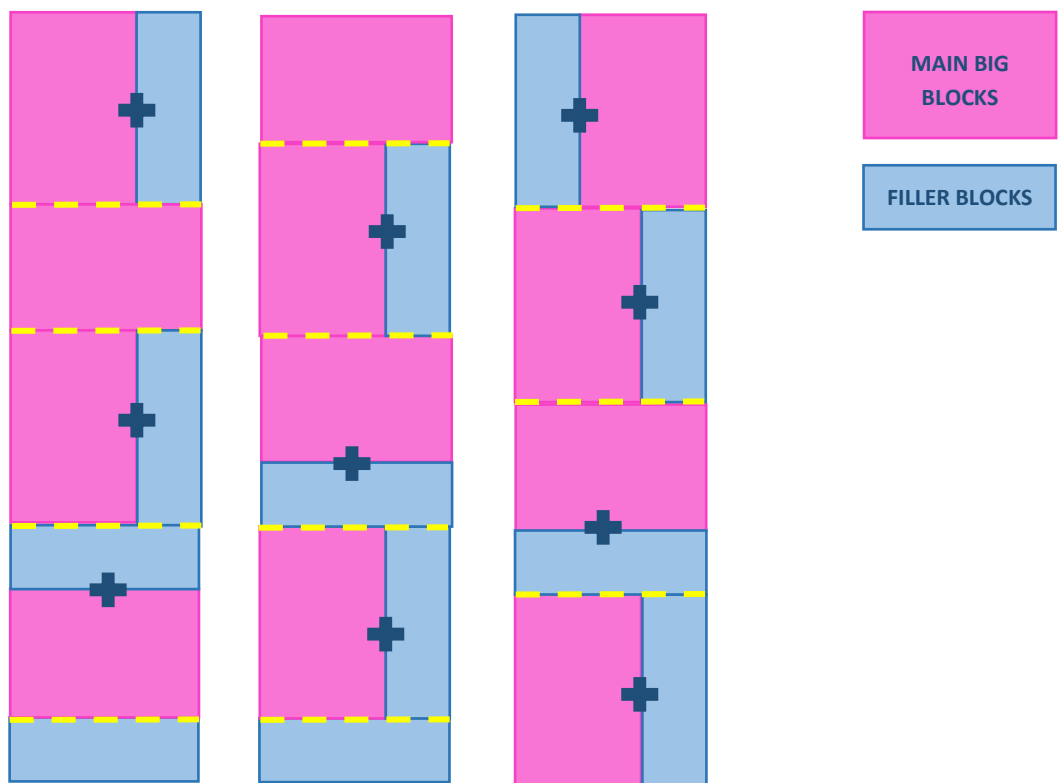


### Example Hanger Layout

Before sewing just any block together, we want to find the main sections in the quilt. For our quilt, we have three main columns of blocks. See photo below.



To join the blocks, we will need to sew them together in sections. Below is a layout diagram of our quilt.



Starting with the first column, start by sewing the filler block to a main big block. Place the first two blocks right sides together.



Pin and stitch the seam on your sewing machine. Stitch just inside the border already stitched on the blocks so the stitching will not be seen on the right side later.



Open out the seam and iron flat.



Continue this method until you have the paired filler blocks and main big blocks in the first column joined together.



Place the first two “sections” in that first column, right sides together.



Pin and stitch the seam on your sewing machine. Stitch just inside the border already stitched on the blocks so the stitching will not be seen on the right side later.



Open out the seam and iron flat



Continue this method until you have each “section” in that first column of the quilt sewn together.



Repeat the above process to join the sections in the remaining columns of the quilt.



Once the blocks are all joined, you will have three rows left to join. Lay the left row on top of the middle one, **right sides together**.



Pin the two rows together along one side and then stitch with a  $\frac{1}{2}$ " (1.25cm) seam, just inside the perimeter stitching line. Press this seam open.



Lay the remaining row onto the joined section, **right sides together**, pin and stitch the seam as we did for the other.



## ADDING THE BORDERS

Lay the borders out along the edges of the quilt top.



Start by joining the side borders first.



Lay the four sections out in a row, pin the seams together.



Stitch the seams with a generous  $\frac{1}{2}$ " (1.25cm) seam or even a little larger if the sections are a little long. Lay the joined borders onto the sides of the quilt (**right sides together**) and pin into position, matching intersecting seams where necessary.





Stitch with a ½" (1.25cm) seam, just inside the perimeter stitching line and then press the seam open.



Stitch the top and bottom end borders together in the same way as we did for the side borders. Add the corner blocks to these end borders. Pin into place, **right sides together**. Stitch the seam and press the seam open.

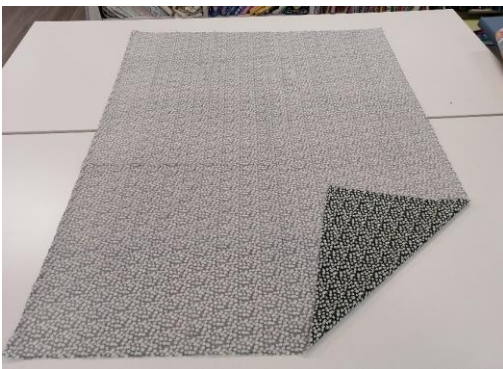


Press all the borders firmly from the right side ensuring they are sitting flat and even with the rest of the quilt.

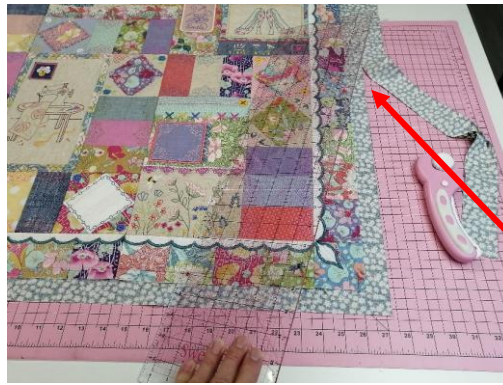


### **CUTTING THE BACKING AND FINISHING**

Place **backing fabric** on your table, wrong side facing up. Then place your sewn quilt on top of **backing fabric**, **wrong sides together**. Pin them together. **Optional – You can spray them together with fabric spray as well.**



To keep all the layers of the quilt together, we can “**stitch in the ditch.**” This process will help keep the seams flat during the laundry process. Trim the excess backing so it is exactly 1¼ inch bigger than the quilt.



**LEAVE 1 ¼" ON THE EDGE. THIS FABRIC WILL BE USED AS THE SELF BINDING**

**NOTE:** Stitching in the ditch is generally an invisible finish on the front and the stitching lines are only visible on the backside of the quilt. **Ensure the bobbin thread on the underside of the quilt matches the fabric, and the top thread on the top of the quilt is invisible thread.** Decide what seams need ditch stitching on the quilt. Not every seam needs to be stitched; choosing the main seams that will hold the central blocks flat is quite acceptable.



**MAKING THE WRAPPED BINDING**

Starting on any side, fold the backing fabric in half and then fold in half again making sure you fold it just over your seam stitching and pin (we started pinning in the middle). Continue pinning your binding until you reach your first corner.



**THIS IS THE FIRST FOLD. FOLD IT UP TO THE EDGE OF YOUR QUILT.**

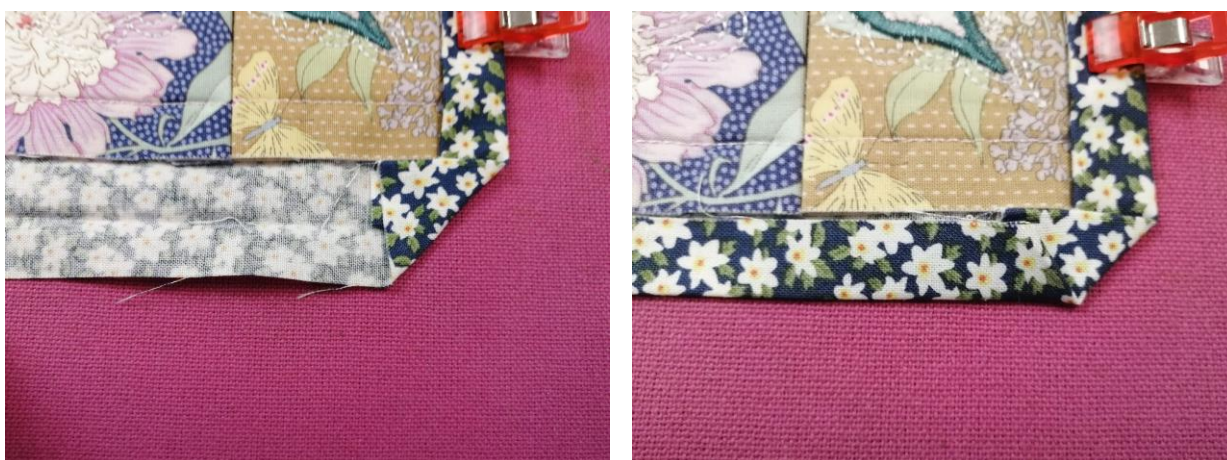


**THIS IS THE SECOND FOLD. MAKE SURE YOU FOLD IT JUST OVER THE SEAM STITCHING ON YOUR QUILT. PIN IN PLACE**

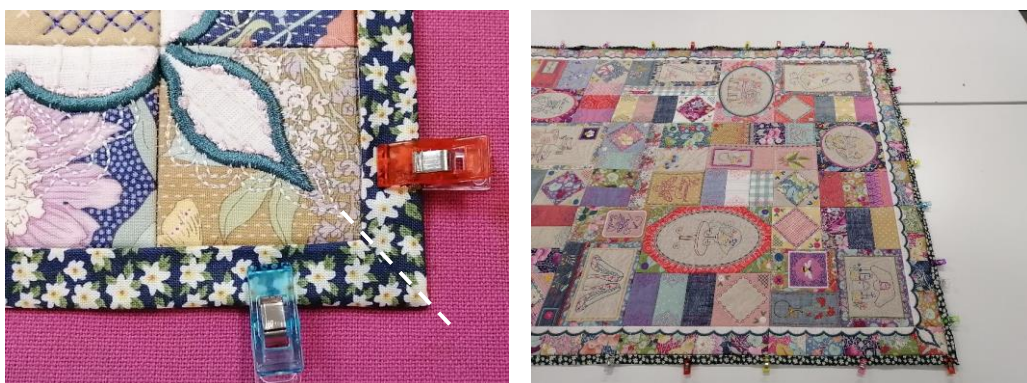
When you get to the corner, try to make a nice, mitred corner.



Turn your binding in at the corner and continue folding the same way as we did for the first side of the binding. You can iron your folds as you go if this helps with your mitred corners.

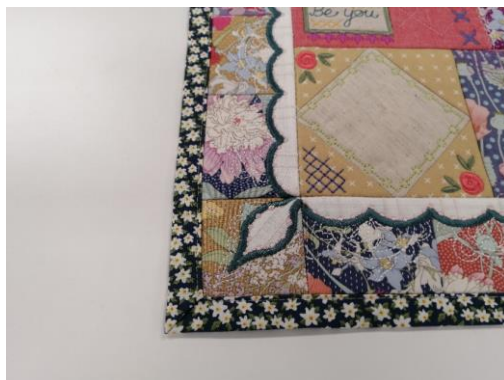


Fold a final time and pin the corner in place. Continue pinning right around the quilt.



Starting anywhere, sew the binding to the quilt just inside the folded edge of the binding. If you want, change your bobbin thread to match your backing.

When you get to the corner, simply leave your needle down and lift the foot and rotate/pivot the quilt. Put the foot down and continue stitching in this fashion until you are right around the quilt. Press well once complete.



Your Treasured Notions Quilt is now complete.

