

# Beauty Bag

Sweet Pea  
MACHINE EMBROIDERY



5x7 6x10 7x11 8x12



## Beauty Bag 5x7 6x10 7x11 and 8x12 Instructions

This pattern includes a Plain Body Panel if you wish to create a version of the bag without the floral Body panels.

### FABRIC REQUIREMENTS

#### 5x7 (13cm x 18cm) Hoop

##### BODY PANEL 1

Fabric A – 18cm x 23cm (7" x 9") background

Small pieces of fabric for the appliqué – five flower centres

##### BODY PANEL 2

Fabric A – 18cm x 23cm (7" x 9") background

Small pieces of fabric for the appliqué – six flowers

##### BODY PANEL 3

Fabric A – 18cm x 23cm (7" x 9") background

Small pieces of fabric for the appliqué - five flowers

##### OPTIONAL: PLAIN BODY PANEL – USE THIS PANEL IF YOU WISH TO MAKE A PLAIN BAG (MAKE THREE)

Fabric A – 18cm x 23cm (7" x 9") background

##### BASE

Fabric A – 18cm x 23cm (7" x 9") background

##### LID

Fabric A – 18cm x 23cm (7" x 9") background

Batting 1 – cut 5 x 18cm x 28cm (7"x 9") one for all Body panels, Lid panel, and Base panel

##### REST OF THE BAG

Fabric B – 12cm x 20cm (4.5" x 8") handle

Fabric C – 10cm x 8cm (4" x 3") Outside Zip Join Cover

Lining 1 – 36cm x 112cm (14" x 44") Inside Bag Lining

Lining 2 – 3.5cm x 19cm (1.25" x 7.5") Zip Join Cover Lining

1x Nylon #3 zipper – 58cm (23") or longer and 1" (2.5cm) in width or wider.

Webbing or Bag Stiffener – 3cm x 15cm (1 1/8" x 6") inside stiffening for the handle (doesn't have to be webbing)

#### 6x10 (16cm x 26cm) Hoop

##### BODY PANEL 1

Fabric A – 20cm x 30cm (8" x 12") background

Small pieces of fabric for the appliqué – five flower centres

##### BODY PANEL 2

Fabric A – 20cm x 30cm (8" x 12") background

Small pieces of fabric for the appliqué – six flowers

##### BODY PANEL 3

Fabric A – 20cm x 30cm (8" x 12") background

Small pieces of fabric for the appliqué - five flowers

##### OPTIONAL: PLAIN BODY PANEL – USE THIS PANEL IF YOU WISH TO MAKE A PLAIN BAG (MAKE THREE)

Fabric A – 20cm x 30cm (8" x 12") background

##### BASE

Fabric A – 20cm x 30cm (8" x 12") background

##### LID

Fabric A – 20cm x 30cm (8" x 12") background

Batting 1 – cut 5 x 20cm x 30cm (8" x 12") one for all Body panels, Lid panel, and Base panel

### **REST OF THE BAG**

**Fabric B** – 13cm x 20cm (5" x 8") handle

**Fabric C** – 15cm x 8cm (6" x 3") Outside Zip Join cover

**Lining 1** – 46cm x 112cm (18" x 44") Inside Bag Lining

**Lining 2** – 3.5cm x 19cm (1.25" x 10") Zip Join Cover Lining

**1x Nylon #3 zipper** – 81cm (32") or longer and 1" (2.5cm) in width or wider

**Webbing or Bag Stiffener** – 32mm x 18cm (1 ¼" x 7") inside stiffening for the handle (doesn't have to be webbing)

### **7x11 (18cm x 28cm) Hoop**

#### **BODY PANEL 1**

**Fabric A** – 23cm x 33cm (9" x 13") background

**Small pieces of fabric for the appliqué – five flower centres**

#### **BODY PANEL 2**

**Fabric A** – 23cm x 33cm (9" x 13") background

**Small pieces of fabric for the appliqué – six flowers**

#### **BODY PANEL 3**

**Fabric A** – 23cm x 33cm (9" x 13") background

**Small pieces of fabric for the appliqué - five flowers**

#### **OPTIONAL: PLAIN BODY PANEL – USE THIS PANEL IF YOU WISH TO MAKE A PLAIN BAG (MAKE THREE)**

**Fabric A** – 23cm x 33cm (9" x 13") background

#### **BASE**

**Fabric A** – 23cm x 33cm (9" x 13") background

#### **LID**

**Fabric A** – 23cm x 33cm (9" x 13") background

**Batting 1 – cut 5 x 23cm x 33cm (9" x 13")** one for all Body panels, Lid panel, and Base panel

### **REST OF THE BAG**

**Fabric B** – 13cm x 23cm (5" x 9") handle

**Fabric C** – 18cm x 8cm (7" x 3") Outside Zip Join cover

**Lining 1** – 51cm x 112cm (20" x 44") Inside Bag Lining

**Lining 2** – 3.5cm x 28cm (1.25" x 11") Zip Join Cover Lining

**1x Nylon #3 zipper** – 89cm (35") or longer and 1" (2.5cm) in width or wider.

**Webbing or Bag Stiffener** – 32mm x 20cm (1 ¼" x 8") inside stiffening for the handle (doesn't have to be webbing)

### **8x12 (20cm x 30cm) Hoop**

#### **BODY PANEL 1**

**Fabric A** – 25cm x 35cm (10" x 14") background

**Small pieces of fabric for the appliqué – five flower centres**

#### **BODY PANEL 2**

**Fabric A** – 25cm x 35cm (10" x 14") background

**Small pieces of fabric for the appliqué – six flowers**

#### **BODY PANEL 3**

**Fabric A** – 25cm x 35cm (10" x 14") background

**Small pieces of fabric for the appliqué - five flowers**

#### **OPTIONAL: PLAIN BODY PANEL – USE THIS PANEL IF YOU WISH TO MAKE A PLAIN BAG (MAKE THREE)**

**Fabric A** – 25cm x 35cm (10" x 14") background

#### **BASE**

**Fabric A** – 25cm x 35cm (10" x 14") background

## LID

**Fabric A** – 25cm x 35cm (10" x 14") background

**Batting 1 – cut 5 x 25cm x 35cm (10" x 14")** one for all Body panels, Lid panel, and Base panel

## REST OF THE BAG

**Fabric B** – 13cm x 25cm (5" x 10") handle

**Fabric C** – 18cm x 8cm (7" x 3") Outside Zip Join cover

**Lining 1** – 53cm x 112cm (21" x 44") Inside Bag Lining

**Lining 2** – 3.5cm x 28cm (1.25" x 11") Zip Join Cover Lining

**1x Nylon #3 zipper** – 94cm (37") or longer and 1" (2.5cm) in width or wider.

**Webbing or Bag Stiffener** – 32mm x 23cm (1 ¼" x 9") inside stiffening for the handle (doesn't have to be webbing)

## **Finished dimensions (approx.):**

**5x7** – 18cmW x 13cmH x 11.5cmD (7"W x 5"H x 4½"D)

**6x10** – 25.5cmW x 16cmH x 17cmD (10"W x 6 ¼"H x 6 ½"D)

**7x11** – 27cmW x 17cmH x 17cmD (10 ¾"W x 6 ½"H x 6 ½"D)

**8x12** – 30cmW x 18cmH x 18cmD (11 ¾"W x 7"H x 7"D)

**NOTE: If you have decided to do this project with Leather, Faux Leather, Vinyl, Cork, PVC (clear plastic) or any combination of these, please refer to our guide with extra tips on how to use these materials here - <https://swpea.com.au/blogs/machine-embroidery-blogs/tips-when-using-pu-leather-in-machine-embroidery>**

## **Sweet Pea Machine Embroidery Designs Design Files Disclaimer-**

Please note to customers who use embroidery software to open our files. In doing so, you may run the risk of the design not stitching as intended by our digitiser's instructions.

We highly recommend that any design file purchased from us be downloaded as per our "how to download our designs" instructions on our website, placed directly onto a USB/memory card, and then placed directly onto the embroidery machine.

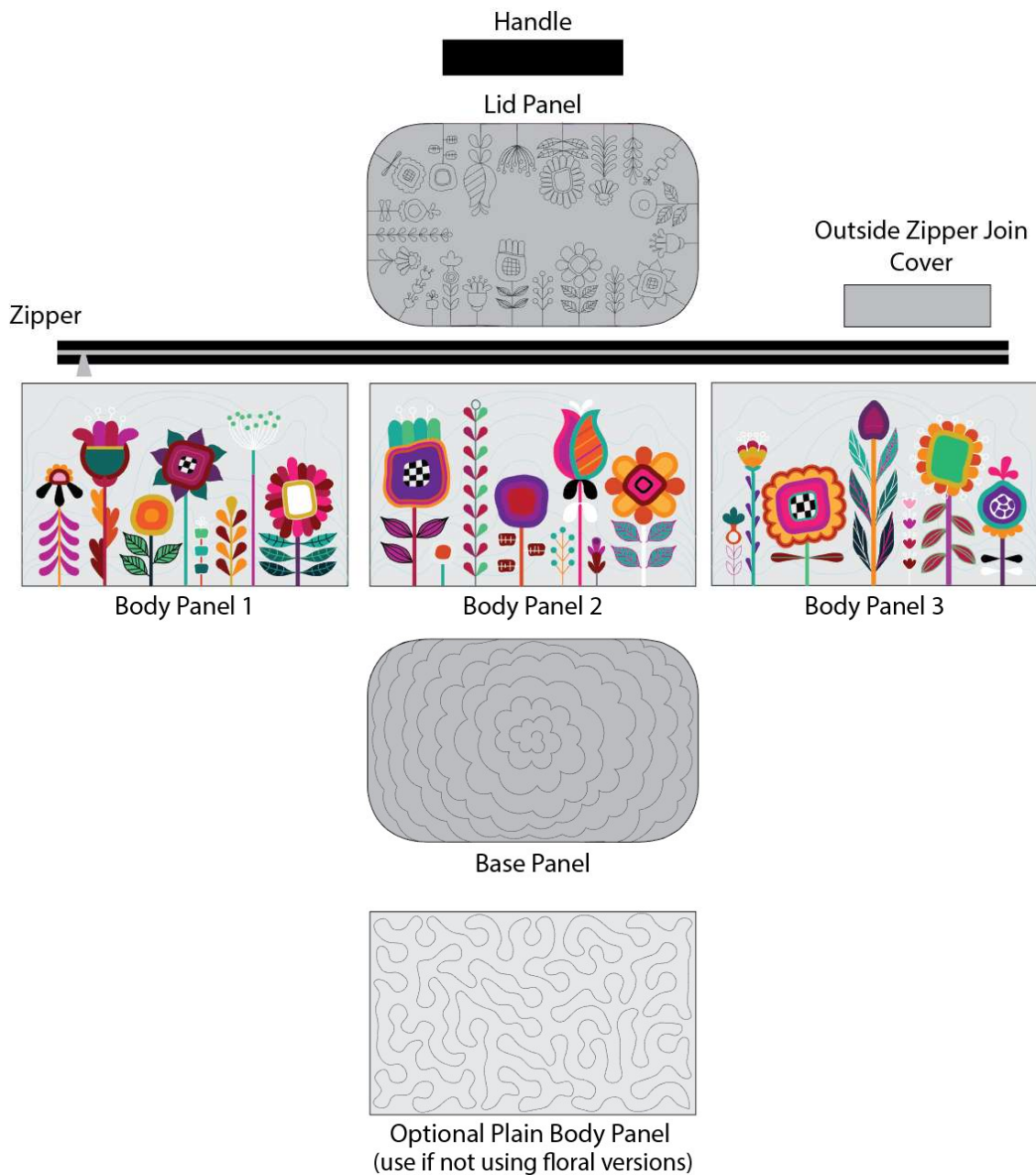
We will not be obligated to compensate customers who have put our files through their software and the resulting stitch-out was not as intended.



Side



Layout of the Outside of the Bag



## INSTRUCTIONS

### USING YOUR EMBROIDERY MACHINE:

For tips on how to correctly hoop your stabiliser, go to <https://swpea.com/blogs/machine-embroidery-blogs/tips-for-stabiliser-in-the-hoop>

### **BODY PANEL 1**

Hoop up **cutaway stabiliser** in the hoop. Load the design onto your machine. Use appliqué scissors for trimming the batting and fabric.



**STEP 1** Place **Batting 1** on top of the hoop. Stitch the batting down. Remove the hoop from your machine and trim the batting about 1-2mm from the stitching.



**STEP 2** Place **Fabric A** right side up on the hoop, covering the batting. Stitch down.



**STEP 3** Embroider the quilting.



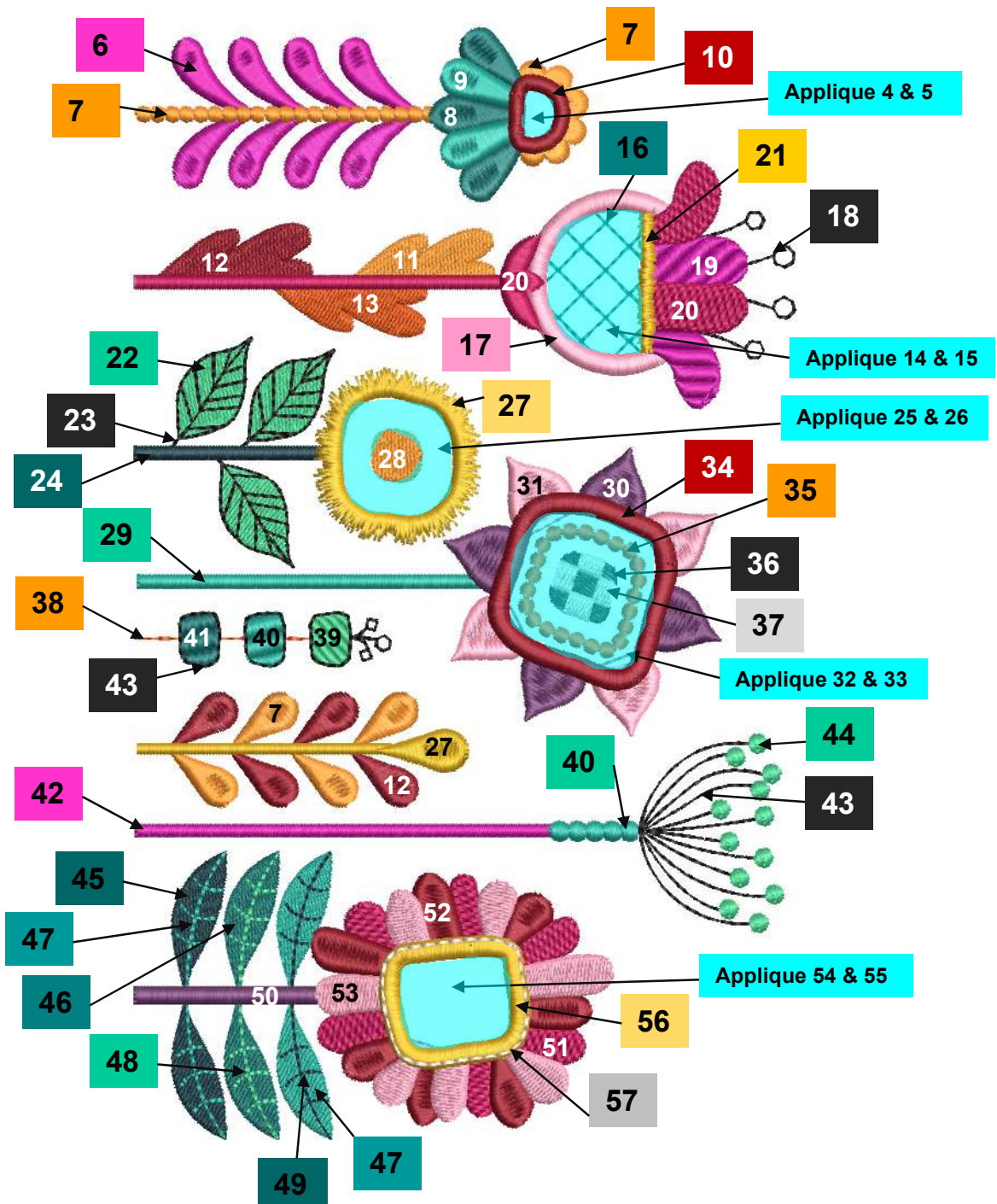
**STEP 4** Stitch the placement line for the first flower.



**STEP 5** Cut a piece of fabric large enough to cover the placement line and place it right side up on top of the placement line. Stitch down. Remove the hoop from your machine and trim the fabric about 1-2mm from the stitching.



**STEPS 6 - 57** Embroider the flowers using the diagram below. The bright blue areas are sections of appliqué. The number corresponds to the step number in the file:



Remove from the hoop and trim the seams to about ½ an inch.

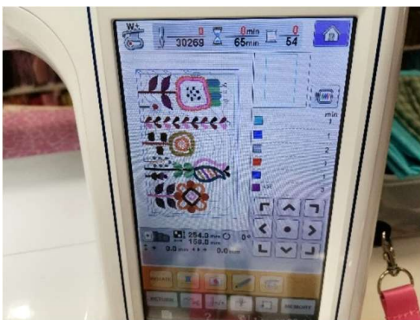


Hold aside until all your blocks/panels are made.



### **BODY PANEL 2**

Hoop up **cutaway stabiliser** in the hoop. Load the design onto your machine. Use appliqué scissors for trimming the batting and fabric.



**STEP 1** Place **Batting 1** on top of the hoop. Stitch the batting down. Remove the hoop from your machine and trim the batting about 1-2mm from the stitching.



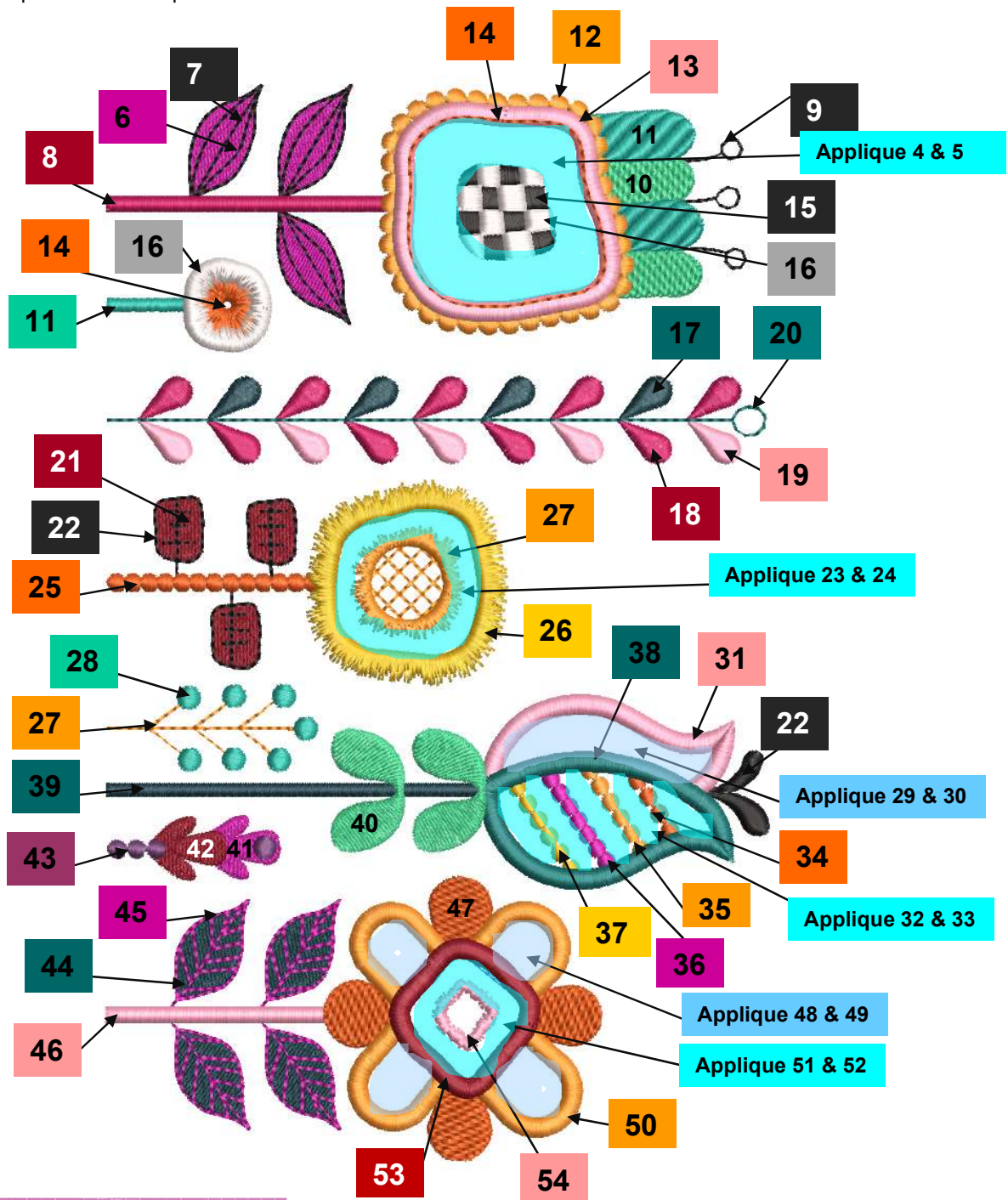
**STEP 2** Place **Fabric A** right side up on the hoop, covering the batting. Stitch down.



**STEP 3** Embroider the quilting.



**STEPS 4 - 54** Embroider the flowers using the diagram below. The bright blue areas are sections of appliqué. The number corresponds to the step number in the file:



Remove from the hoop and trim the seams to about ½ an inch.



Hold aside until all your blocks/panels are made.



### **BODY PANEL 3**

Hoop up **cutaway stabiliser** in the hoop. Load the design onto your machine. Use appliqué scissors for trimming the batting and fabric.



**STEP 1** Place **Batting 1** on top of the hoop. Stitch the batting down. Remove the hoop from your machine and trim the batting about 1-2mm from the stitching.



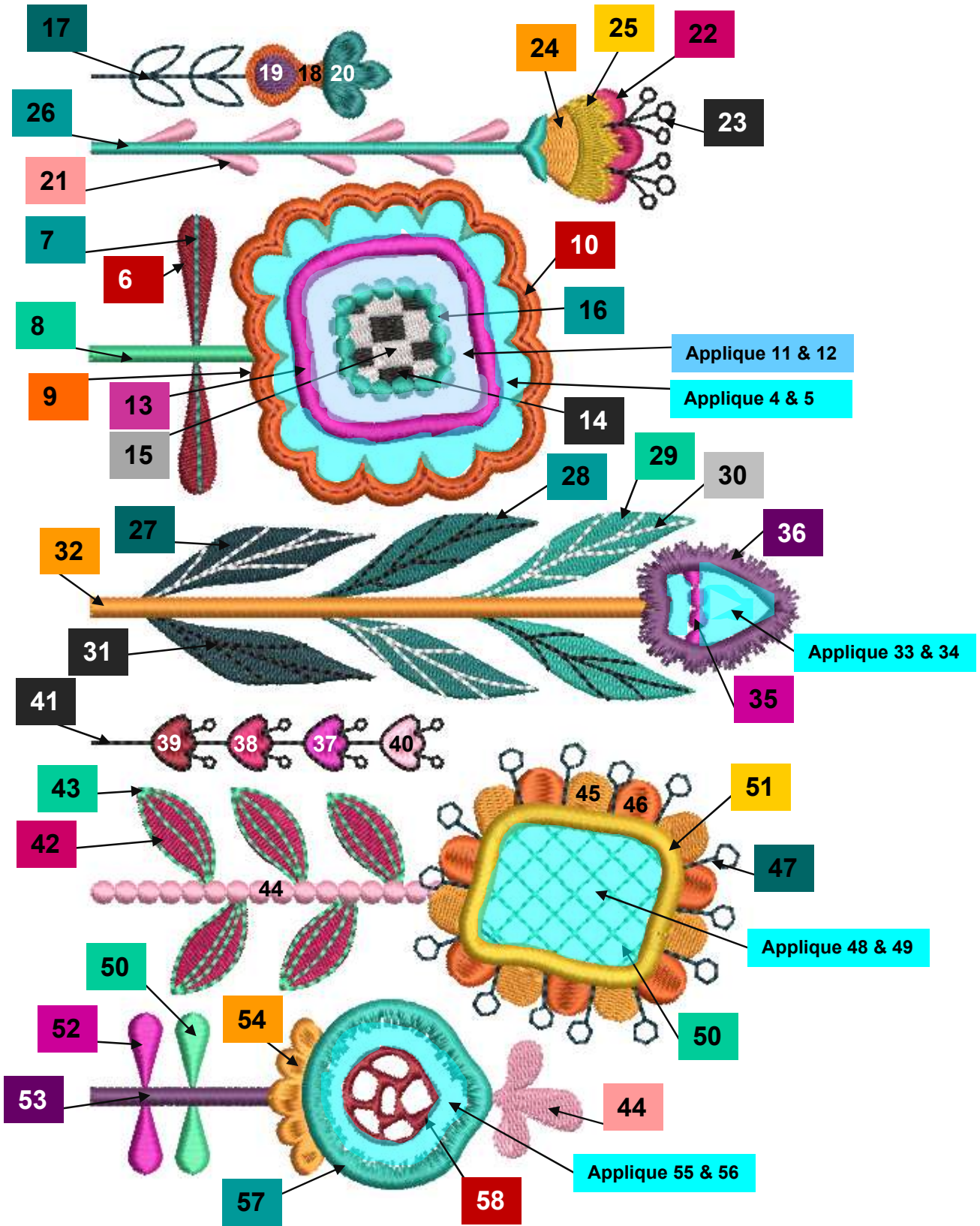
**STEP 2** Place **Fabric A** right side up on the hoop, covering the batting. Stitch down.



**STEP 3** Embroider the quilting.



**STEPS 4 - 58** Embroider the flowers using the diagram below. The bright blue areas are sections of appliqué. The number corresponds to the step number in the file:





Remove from the hoop and trim the seams to about ½ an inch.



Hold aside until all your blocks/panels are made.



**OPTIONAL: PLAIN BODY PANEL – USE IF NOT MAKING BAG WITH FLORAL BODY PANELS (MAKE THREE)**

Hoop up **cutaway stabiliser** in the hoop. Load the design onto your machine. Use appliqué scissors for trimming the batting and fabric.

**STEP 1** Place **Batting 1** on top of the hoop. Stitch the batting down. Remove the hoop from your machine and trim the batting about 1-2mm from the stitching.



**STEP 2** Place **Fabric A** right side up on the hoop, covering the batting. Stitch down.



**STEP 3** Embroider the quilting.

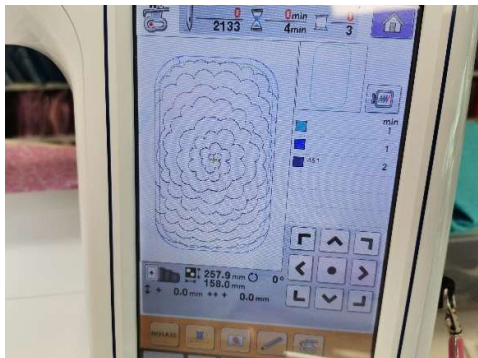


Remove from the hoop and trim the seams to about ½ an inch.

Hold aside until all your blocks/panels are made. Make three if using this panel

## **BASE**

Hoop up **cutaway stabiliser** in the hoop. Load the design onto your machine. Use appliqué scissors for trimming the batting and fabric.



**STEP 1** Place **Batting 1** on top of the hoop. Stitch the batting down. Remove the hoop from your machine and trim the batting about 1-2mm from the stitching.



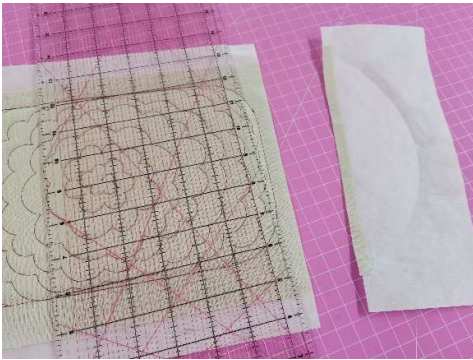
**STEP 2** Place **Fabric A** right side up on the hoop, covering the batting. Stitch down.



**STEP 3** Embroider the quilting.



Remove from the hoop and trim the seams to about ½ an inch.



Hold aside until all your blocks/panels are made.



### LID

Hoop up **cutaway stabiliser** in the hoop. Load the design onto your machine. Use appliqué scissors for trimming the batting and fabric.



**STEP 1** Place **Batting 1** on top of the hoop. Stitch the batting down. Remove the hoop from your machine and trim the batting about 1-2mm from the stitching.



**STEP 2** Place **Fabric A** right side up on the hoop, covering the batting. Stitch down.



**STEP 3** Embroider the floral decorative stitching.

Remove from the hoop and trim the seams to about ½ an inch.



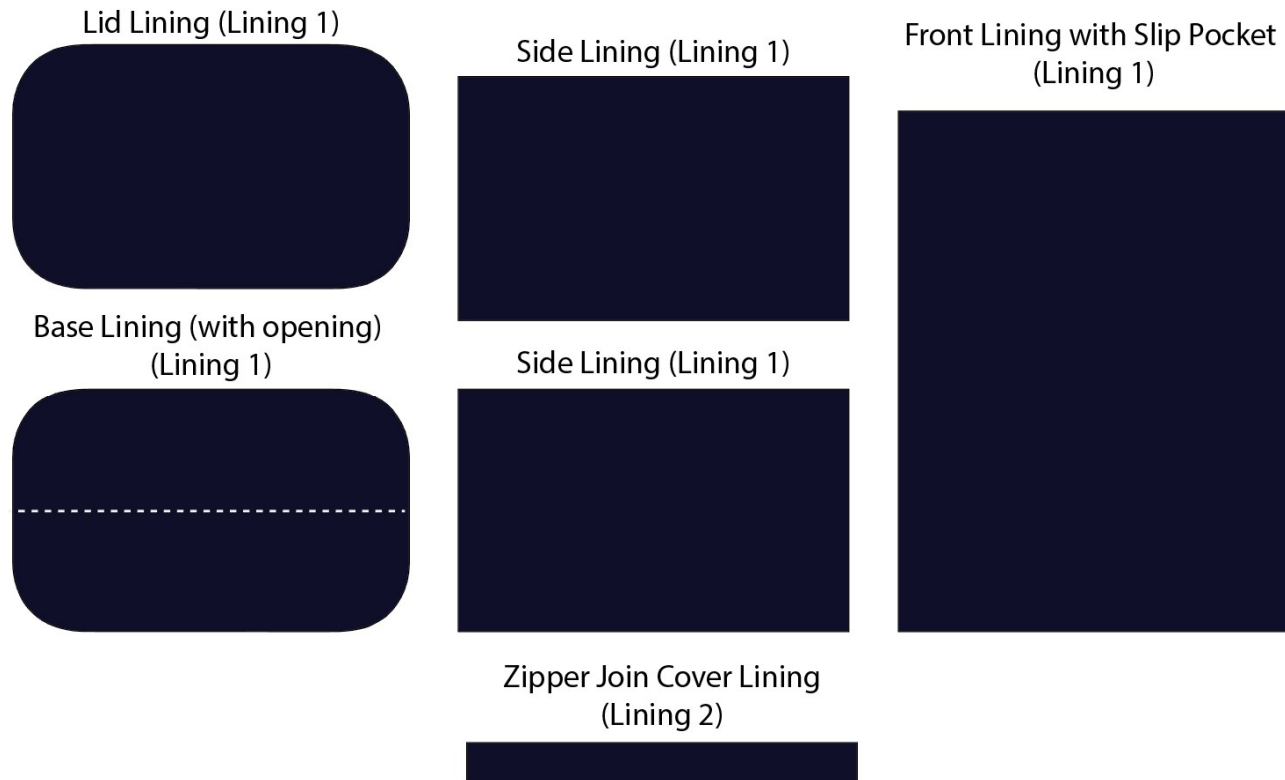
Hold aside until all your blocks/panels are made.



**USING YOUR REGULAR SEWING MACHINE:**

**CUTTING THE LINING**

**Lining Layout**



Lay your **Lining 1** (inside lining) onto your work surface folded wrong sides together along the longest side. Using a Body panel as a pattern, cut one pair of the body panels – these will be the **Side Lining Pieces**. Set aside.



To create the **Front Lining with Slip pocket**, keep **Lining 1** folded wrong sides together and place a Body panel on top. Have the fold of the fabric sitting 1" (2.5cm) past the seam allowance. Trim the fabric to the size of the body panel with the extra 1" fold.



When the fabric is folded correctly, it will make a lining slip pocket.



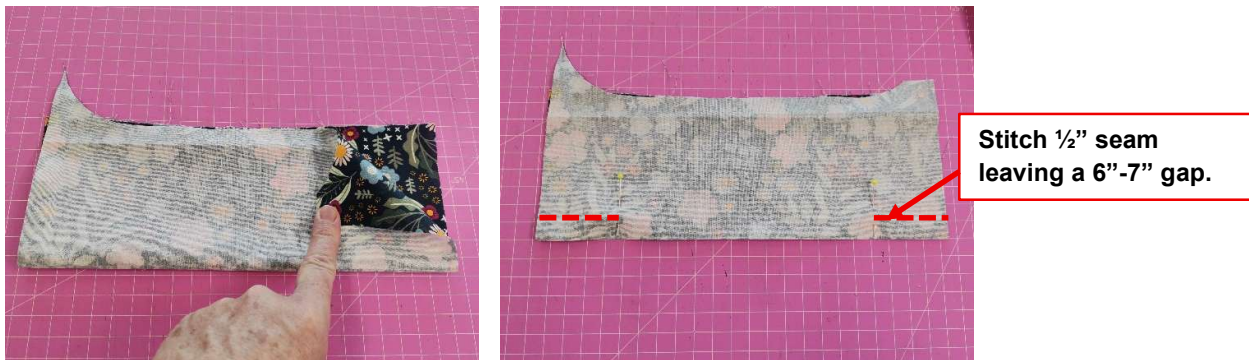
Cut a single lining for the lid from **Lining 1** fabric – **Lid Lining**. (we've used the base panel as the guide in the photos below, but it's the same size as the lid panel – use can use either as a guide to cut the lining.)



Cut a single lining for the Lid panel from **Lining 1** fabric about **1" deeper than needed**. (we've used the base panel as the guide in the photos below, but it's the same size as the lid panel – use can use either as a guide to cut the lining.)



Fold the Base Lining (just cut) in half and sew a  $\frac{1}{2}$ " seam along the folded edge. This will leave a 6" or 7" gap in the base.

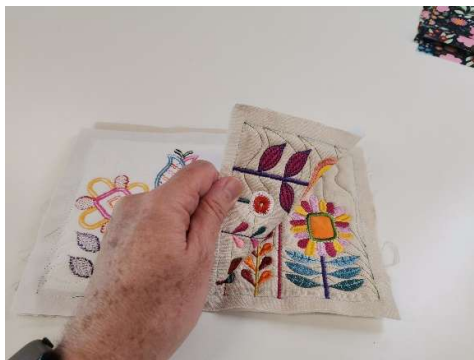


Once stitched, split the fold open with the scissors and press open the seam – this will be the **Base Lining**. This will create an opening to turn the project right side out once completed.



## JOIN THE PANELS FOR THE FRONT AND BACK OF THE TOTE

Lay out the three Body panels how you want them to be. The middle block will be the front of the Beauty Bag.



Take the first two panels, lay them **right sides together**, pinning them together along the short seam. Stitch the seam just inside the perimeter stitching (1/2" seam) to ensure no perimeter stitching is visible from the right side of the work.



Once complete, repeat the same steps for the remaining block.



Check that the layout is what you want.



Press the seams open.

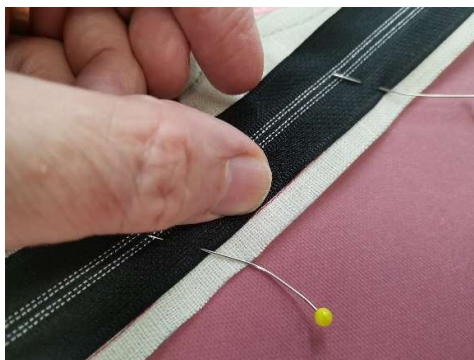


**ATTACHING THE ZIP TO THE OPENING OF THE JOINED BODY PANELS**

Before attaching the zip, stitch a placement stitch along the top edge of the joined body panels, 6mm (1/4") in from the top edge.



Place one edge of the zipper tape (zip is **wrong side up**) and pin into position using the placement stitch line.



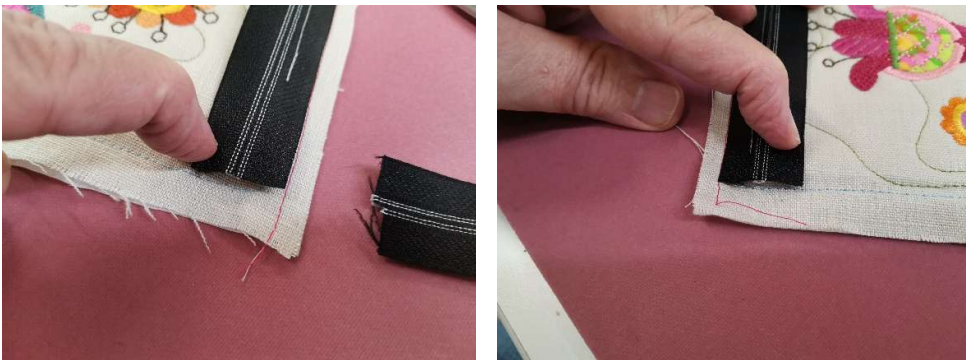
Leave the zip tape end free for the last 5cm (2") from the back centre back seam.



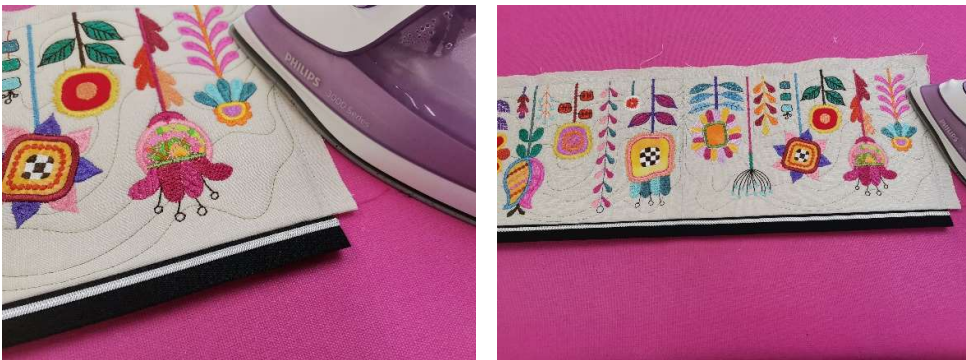
Using your zipper foot, stitch the zipper to the seam, about 8mm ( $\frac{1}{3}$ " ), which will leave a 2mm ( $\frac{1}{8}$ " ) gap along the side of the zip teeth. Lightly press the zip into its finished position.



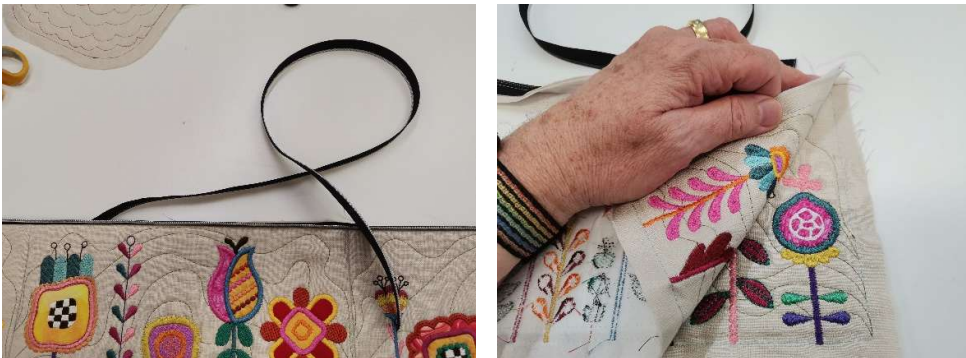
Lay the panel **right side** up on your work surface. Trim the zip tape back to the stitching line on the back panel seam (do this at both ends of the zip).



Lightly press the seam with the zip tucked under. Trim off a little bit more if the zip end tape is protruding past the seam allowance perimeter stitching.



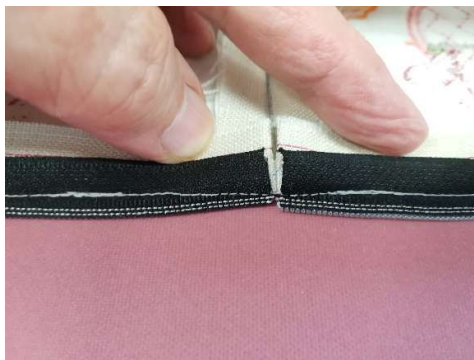
Separate the free side of the zip tape from the panel. Pin the back seam together (making sure the zip tape is not caught in the seam) and stitch the seam closed.



Press the back seam open, and then pin the zip tape ends into position



Using the same distance from the end, stitch the zip tape onto the finished back seam, ensuring there is a 3mm ( $\frac{1}{8}$ " ) gap over the seam. This gap is needed to slide the zip pull onto the tape without too much effort.



Quarter all the seams (fold in half and make a notch, then fold the half section again to make another). For the body, the centre seam will pair with the centre back seam and then while these seams are on top of each other, notch clip the side seams.



The same method is applied to the top and base panels. Fold the panel in half to find the centre front and back notches and then fold them widthways to find the side notches.



Working with the wrong sides of the panels facing out, attach the base panel to the non-zip seam of the joined body panels, notch to notch, on the sides and the ends.



Once they are in position, turn the work so the base panel is on the work surface. Working on each corner, clip almost into the perimeter stitching line on the body panels only, every 1cm ( $\frac{3}{8}$ " ) around the curved area. Pin or use quilt clips to hold the seams together. Working on one corner at a time sometimes makes the stitching easier to achieve.



With a zip foot, stitch the body to the base panel, stitching just inside the perimeter stitching line on the side panels.



Check inside the bag for any pleats in the corners. This seam is measured to stitch perfectly into place.



Stitch around the base seam for a second time if you feel you need to straighten up the stitching.



### **MAKING THE HANDLE**

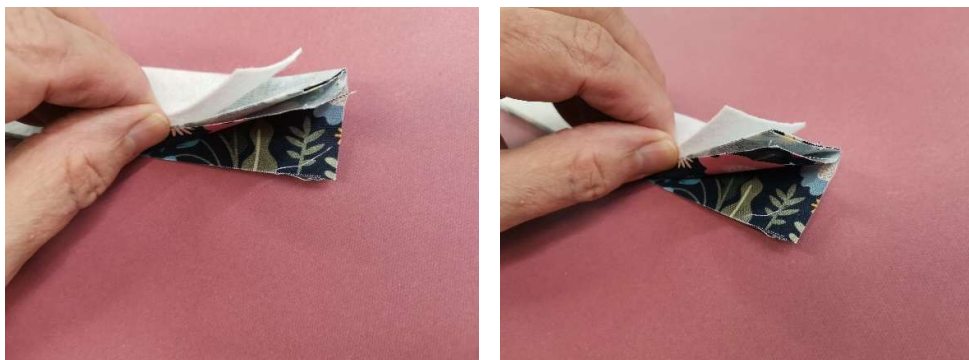
Cover the strip of bag stiffener or cotton webbing with **Fabric B** (handle fabric). You can use plain matching webbing or even a store-bought handle/strap.



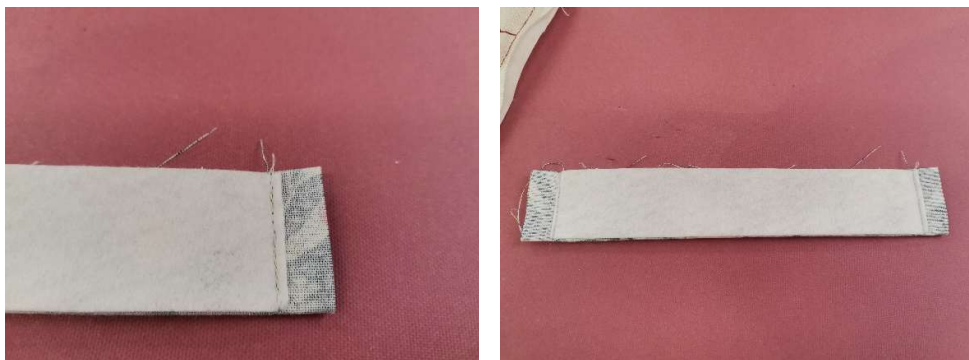
Fold **Fabric B** width ways, **right sides together**. Finger-press the fold. Proceed to fold the fabric again so the fabric fold is now on top of the raw seams.



Place the bag stiffener strip or cotton webbing on top of the folded fabric.



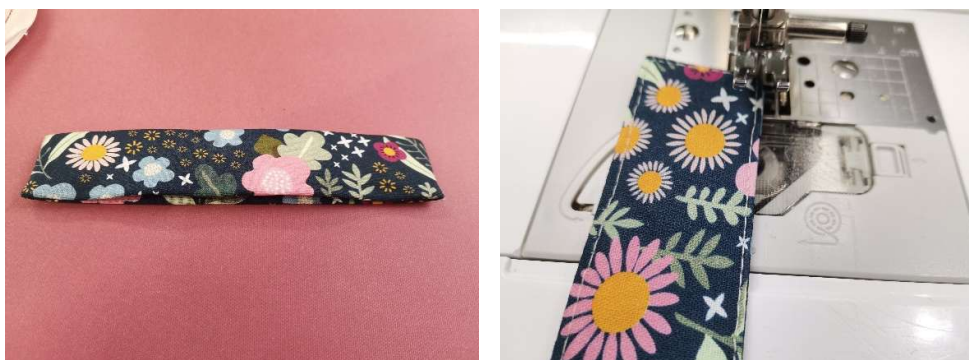
Stitch through all layers 12.5mm (1/2") in from the ends (just catching the bag stiffener or cotton webbing).



Turn the fabric and stabiliser into the folded hand, then



Turn through again so the raw ends are inside the handle strip and there are two fabric folds on the outside of the opening. Press, then top stitch the handle through all layers. This closes the opening along one of the long sides and keeps the stabiliser or cotton wadding from moving.



Place the finished handle onto the middle of the Lid panel. Keeping it centred, place the finished end of the handle, 5cm (2") in from the perimeter stitching line.



2" IN FROM THE STITCHING

Edge stitch and top stitch into position, forming a narrow rectangle within the end of the handle.



Repeat the procedure for the remaining end of the handle.



### **PREPARING THE LID FOR THE ZIP**

Before attaching the remaining side of the zip to the lid, machine a placement stitch around the outer seam edge of the lid, 6mm (1/4") in from the raw edge.





Fold the Outside Zipper Join Cover (**Fabric C**) in half widthways, **right sides together**. Stitch a 12.5mm ( $\frac{1}{2}$ " ) seam on each end to create a shallow bag.



Turn the zip cover to the right side and press. Mark the centre of the open edge of this strip of fabric.



Decide which long edge will be the back edge of the lid. Pin the raw edge seam of the zip cover to the back of the lid, centre on centre. Set the zip cover strip back 6mm ( $\frac{1}{4}$ " ) from the seam edge using the placement line as a guide.



Stitch into position with a 6mm ( $\frac{1}{4}$ " ) seam.



The remaining zip strip needs to be marked into quarter sections (fold in half and make a notch, then fold the half section again to make another).



Starting at the centre back of the lid (where the zip cover strip has been stitched), pin the zip around the edge of the lid in quarters, **right sides together**. Place the edge of the zip tape onto the 6mm ( $\frac{1}{4}$ " ) placement line like we did for the zip on the body of the bag. When the ends of the zip tape meet at the centre back, there should be a 3mm ( $\frac{1}{8}$ " ) gap to match the other side of the zip.



Keeping the zip tape edge on the placement line, stitch into place using an 8mm ( $\frac{2}{3}$ " ) seam. Snip the zip a good 6mm ( $\frac{1}{4}$ " ) like we did for the base seam but don't snip too far. The zip should not be tight going around the corners.



Pin into place and work in quarter sections like we did for the base seam.



Lightly press the zip teeth into towards the centre of the lid. Press the snipped zip tape corners lightly to set them in place.



Fold the Zipper Join Cover Lining (**Lining 2**) lengthways and create a 12.5mm (½”) seam to join. Press the seam open.



Turn the strip through to the right side, centre the seam in the middle of the strip and press flat. Edge stitch the raw sides closed on each edge of the lining zip cover. Centre the strip on top of the zip tape so it covers the raw edge join of the zip teeth.



Stitch the strip into place with a 6mm (1/4") seam, keeping the raw edge in line with the zip tape. The Zipper Join Cover Lining (**Lining 2**) is shorter than the outside one so it will sit in 8-10mm (almost 3/8") on each end.



With the lid facing up, place the lining (**wrong side up**) on top of the lid and pin around all the edges. Leave an opening (not quite as long as the lining zip cover strip) to turn the lid to the outside once stitched.



Stitch around the edge of the lid using the zip stitching line as a guide.



Trim the outer edge back to 6mm (1/4") but leave the turn-through seam at the original seam allowance.



Turn the lid through the opening, check for pleats, and then press.

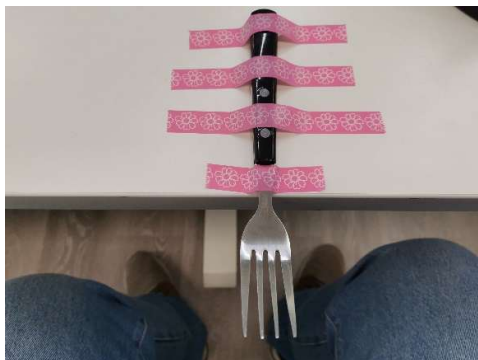


Pin and slip stitch the turn-through opening. Leave both the outer zip cover strip and the lining zip cover strip on the outside of the hand-stitched closure.



## **ATTACHING THE ZIP**

When attaching the runner to the zip, we often tape a fork to a table-top and make a jig for the zip pull to be wedged into. Place the zip pull upside down onto the middle prongs of the fork with the wider front end of the zip pull facing toward you.



Working on the inside of the bag body (in your left hand) and the lining side of the lid (in your right hand, folded in two), slide one side into the zip pull and then manipulate the other side so they become even and then push the pieces away from you to run the zip.



This may need to be done a couple of times to get the back teeth ends even.



Run/close the zip pull around to the centre back seam as shown below.



Just inside the end of the zip cover strip (about 1cm (3/8")), hand tack the zip teeth coils together. This will prevent them from coming unzipped during use. This step could be done with a zigzag on the sewing machine if you can wrestle it into place. Run the zip pull off the tape and add another hand tack to keep the ends of the teeth together as well.



Go back and attach the zip pull onto the zip tape, like we did before.



Ensure the teeth are even at the centre back so there is no bulge or hole when the zip is fully closed.



**NOTE:** We added a further two hand tacks on the other side of the zip to keep the teeth closed during use. These tacks will not be seen as they will be covered by the two zip cover strips we've added. Working on the inside of the bag, pin the lining zip cover strip to the seam allowance and then machine stitch into place with a 6mm (1/4") seam.



Now working on the outside of the bag, at the centre back, pin the fold edge of the outer zip cover strip to the back panels and top stitch it into place. Check that it sits even once stitched. Ensure the stitching has not caught any seams inside.



### **MAKING THE LINING**

The front pocket in the lining is a slip pocket and the opening fold of the pocket is about 4cm (1 ½") down from the top edge of the lining panel.



The finished panel needs to match the other two lining pieces so that will dictate the depth of the pockets.

Join the lining panels together with a 1.5cm (5/8") seam to make the lining a little smaller once inside the project.



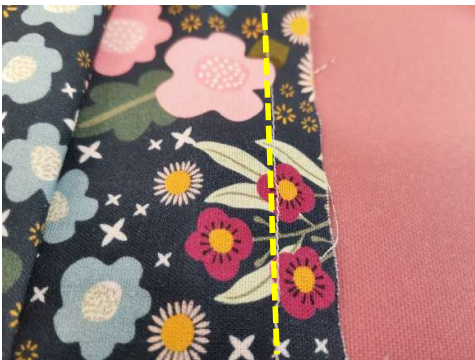
The pocket can be left as one long pocket or it can be stitched through the centre to create two smaller pockets, your choice.



Stitch the centre back seam of the lining body (again with the wider seam allowance). Press the seam open.



We stitched a placement or staystitch line along the bottom edge of the lining body, 12.5mm ( $\frac{1}{2}$ " ) in from the raw edge as a clipping guide for when we attach the lining base.



Again, fold and clip to find the middles of the long side and use the seam as the centre mark for quartering the lining base onto the body.



Matching the quarter notches, attach the base to the body of the lining (check your slip pocket is sitting away from the seam we are about to stitch). As we did with the body of the bag, clip and pin the base into position. Stitch into place. Lightly press if you need but don't trim back the seam allowance.



With the lining **inside out** and the bag and attached lid, **right side out**, slide the bag body into the lining.



Shimmy the lining up the bag (it will feel a little snug due to the larger seams), placing the centre back seam of the lining to the centre back seam of the body (the lid will be sitting down the side of the bag and sandwiched in between the lining). Match the other front two seams and then pin or quilt clip along the top edge. Check that the zip teeth are sitting flat and facing down.



Using a zip foot, stitch around the top seam, completing the full seam (not need to leave a gap). This seam often needs stitching a second time as the first seam is often very wobbly. No one will know!



Not need for trimming or clipping. Pull the work through the base seam of the lining by folding the bag into three and rolling the lining down over the folds.



Pin the hole in the lining and then close with the machine. Press the top zip edge of the opening and then push the lining down into the bag cavity.

**OPTIONAL:** The front and back lining and outside panel base seams can be pinned and stitched together just outside (on the seam allowance) of the original stitching line. These seams will sit together, pointing into the base. This technique anchors the lining to the base and makes the inside look cleaner. Turn the bag inside out (so the lining is on the exterior) to complete this technique and it needs to be done before closing the turn through hole on the lining.



Enjoy your finished Beauty Bag.

