

Book Stack Hanger



5x7 6x10 8x12

Sweet Pea
MACHINE EMBROIDERY

Book Stack Hanger 5x7 6x10 8x12 Instructions

This design has optional add-on panels for interchangeable top panels for an alternative look.

Sleeping Cat option: <https://swpea.com/products/book-stack-sleeping-kitten-add-on-block>

Reading glasses option: <https://swpea.com/products/book-stack-reading-glasses-add-on-block>

Text for the books is not included in the design but you can add your own using your machines text settings

<https://youtu.be/k82b4Pa2ASU?si=WQCkU4fEIEOKH8mu>

FABRIC REQUIREMENTS

5x7 (13cm x 18cm) Hoop

FLORAL TOP PANEL

- Fabric A - 6.5cm x 23cm (2.5" x 9") top strip
- Fabric B - 14cm x 23cm (5.5" x 9") background
- Fabric C - 5cm x 14cm (2" x 5.5") book
- Fabric D - 5cm x 5cm (2" x 2") flower 1
- Fabric E - 5cm x 5cm (2" x 2") flower 2
- Fabric F - 6.5cm x 6.5cm (2.5" x 2.5") flower 4
- Fabric G - 8cm x 8cm (3" x 3") flower 5

BOOKS MIDDLE PANEL

- Fabric A - 18cm x 23cm (7" x 9") background
- Fabric B - 5cm x 17cm (2" x 6.5") book 4 (Joins to Fabric G on Bottom Panel)
- Fabric C - 5cm x 17cm (2" x 6.5") book 5
- Fabric D - 5cm x 17cm (2" x 6.5") book 6
- Fabric E - 6.5cm x 15cm (2.5" x 6") book 7
- Fabric F - 4cm x 15cm (1.5" x 6") book 8
- Fabric G - 5cm x 15cm (2" x 6") book 9
- Small piece of fabric for the applique – label on book 7

BOOKS BOTTOM PANEL

- Fabric A - cut 2 - 15cm x 6.5cm (6" x 2.5") background
- Fabric B – 6.5cm x 23cm (2.5" x 9") surface
- Fabric C - 4cm x 19cm (1.5" x 7.5") book 1
- Fabric D - 5cm x 19cm (2" x 7.5") book 2
- Fabric E - cut 2 - 5cm x 6.5cm (2" x 2.5") book 3 ends
- Fabric F - 5cm x 10cm (2" x 4") book 3 middle
- Fabric G - 6.5cm x 17cm (2.5" x 6.5") book 4 (Joins to Fabric B on Middle Panel)
- Small piece of fabric for the applique – image on book 2

Batting 1 - 18cm x 23cm (7" x 9") cut one for each panel

REST OF THE HANGER

- Fabric H - cut 1 x 10cm x 25cm (4" x 10") loops
- Fabric I - cut 1 x 28cm x 48cm (11" x 19") backing – cut later (measure your joined panels first)

6x10 (16cm x 26cm) Hoop

FLORAL TOP PANEL

- Fabric A - 8cm x 30cm (3" x 12") top strip
- Fabric B - 17cm x 30cm (6.5" x 12") background
- Fabric C - 5cm x 19cm (2" x 7.5") book
- Fabric D - 6.5cm x 6.5cm (2.5" x 2.5") flower 1
- Fabric E - 6.5cm x 6.5cm (2.5" x 2.5") flower 2
- Fabric F - 8cm x 8cm (3" x 3") flower 4
- Fabric G - 9cm x 9cm (3.5" x 3.5") flower 5

BOOKS MIDDLE PANEL

- Fabric A - 20cm x 30cm (8" x 12") background
- Fabric B - 5cm x 23cm (2" x 9") book 4 (Joins to Fabric G on Bottom Panel)
- Fabric C – 6.5cm x 23cm (2.5" x 9") book 5
- Fabric D - 5cm x 23cm (2" x 9") book 6
- Fabric E – 6.5cm x 23cm (2.5" x 9") book 7

© 2026 Sweet Pea. All designs remain the property of Sweet Pea Machine Embroidery.

They may not be copied or reproduced in any way. The design files may not be sold or shared.

Fabric F - 5cm x 22cm (2" x 8.5") **book 8**
Fabric G - 5cm x 22cm (2" x 8.5") **book 9**
Small piece of fabric for the applique – label on book 7

BOOKS BOTTOM PANEL

Fabric A - cut 2 - 17cm x 8cm (6.5" x 3") **background**
Fabric B - 6.5cm x 30cm (2.5" x 12") **surface**
Fabric C - 5cm x 27cm (2" x 10.5") **book 1**
Fabric D - 6.5cm x 25cm (2.5" x 10") **book 2**
Fabric E - cut 2 - 6.5cm x 9cm (2.5" x 3.5") **book 3 ends**
Fabric F - 6.5cm x 13cm (2.5" x 5") **book 3 middle**
Fabric G - 6.5cm x 23cm (2.5" x 9") **book 4 (Joins to Fabric B on Middle Panel)**
Small piece of fabric for the applique – image on book 2

Batting 1 - 20cm x 30cm (8" x 12") cut one for each panel

REST OF THE HANGER

Fabric H - cut 1 x 10cm x 25cm (4" x 10") loops
Fabric I - cut 1 x 35cm x 56cm (14" x 22") backing – **cut later (measure your joined panels first)**

8x12 (20cm x 30cm) Hoop

FLORAL TOP PANEL

Fabric A - 8cm x 35cm (3" x 14") **top strip**
Fabric B - 19cm x 35cm (7.5" x 14") **background**
Fabric C - 5cm x 22cm (2" x 8.5") **book**
Fabric D - 8cm x 8cm (3" x 3") **flower 1**
Fabric E - 6.5cm x 6.5cm (2.5" x 2.5") **flower 2**
Fabric F - 9cm x 9cm (3.5" x 3.5") **flower 4**
Fabric G - 10cm x 10cm (4" x 4") **flower 5**

BOOKS MIDDLE PANEL

Fabric A - 25cm x 35cm (10" x 14") **background**
Fabric B - 5cm x 27cm (2" x 10.5") **book 4 (Joins to Fabric G on Bottom Panel)**
Fabric C - 6.5cm x 27cm (2.5" x 10.5") **book 5**
Fabric D - 5cm x 25cm (2" x 10") **book 6**
Fabric E - 8cm x 25cm (3" x 10") **book 7**
Fabric F - 5cm x 24cm (2" x 9.5") **book 8**
Fabric G - 5cm x 24cm (2" x 9.5") **book 9**
Small piece of fabric for the applique – label on book 7

BOOKS BOTTOM PANEL

Fabric A - cut 2 - 20cm x 8cm (8" x 3") **background**
Fabric B - 6.5cm x 35cm (2.5" x 14") **surface**
Fabric C - 5cm x 30cm (2" x 12") **book 1**
Fabric D - 8cm x 29cm (3" x 11.5") **book 2**
Fabric E - cut 2 - 8cm x 10cm (3" x 4") **book 3 ends**
Fabric F - 8cm x 14cm (3" x 5.5") **book 3 middle**
Fabric G - 6.5cm x 27cm (2.5" x 10.5") **book 4 (Joins to Fabric B on Middle Panel)**
Small piece of fabric for the applique – image on book 2

Batting 1 - 25cm x 35cm (10" x 14") cut one for each panel

REST OF THE HANGER

Fabric H - cut 1 x 10cm x 25cm (4" x 10") loops
Fabric I - cut 1 x 42cm x 70cm (16.5" x 27.5") backing – **cut later (measure your joined panels first)**

Finished dimensions (approx.) with sample layout not including loops:

5x7 – 18cmW x 36cmL (7" x 14.5")
6x10 – 25cmW x 45cmL (10" x 17.5")
8x12 – 30cmW x 57cmL (12" x 22.5")

NOTE: If you have decided to do this project with Leather, Faux Leather, Vinyl, Cork, PVC (clear plastic) or any combination of these, please refer to our guide with extra tips on how to use these materials here - <https://swpea.com.au/blogs/machine-embroidery-blogs/tips-when-using-pu-leather-in-machine-embroidery>

Sweet Pea Machine Embroidery Designs Design Files Disclaimer-

Please note to customers who use embroidery software to open our files. In doing so, you may run the risk of the design not stitching as intended by our digitiser's instructions.

We highly recommend that any design file purchased from us be downloaded as per our "how to download our designs" instructions on our website, placed directly onto a USB/memory card, and then placed directly onto the embroidery machine.

We will not be obligated to compensate customers who have put our files through their software and the resulting stitch-out was not as intended.

INSTRUCTIONS

USING YOUR EMBROIDERY MACHINE:

For tips on how to correctly hoop your stabiliser, go to <https://swpea.com/blogs/machine-embroidery-blogs/tips-for-stabiliser-in-the-hoop>

BOOKS FLORAL TOP PANEL

Hoop up **stabiliser** in the hoop. Load the design onto your machine. Use applique scissors for trimming the batting and fabric.



STEP 1 Place **Batting** on top of the hoop. Stitch the batting down. Remove the hoop from your machine and trim the batting about 1-2mm from the stitching.



STEP 2 Stitch the placement line for the top strip.



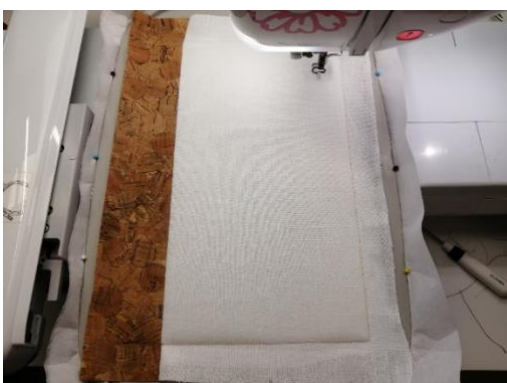
STEP 3 Place **Fabric A** right side up on top of the hoop covering the placement line. Stitch down. Remove the hoop from your machine and trim the fabric about 1-2mm from the stitching. Leave the excess fabric in the seams.



STEP 4 Using the right vertical trimmed edge of **Fabric A** as a placement line, place **Fabric B** on top of the hoop **wrong side up** crossing the placement line by ¼” and with the excess fabric towards the left of the hoop. Stitch down.



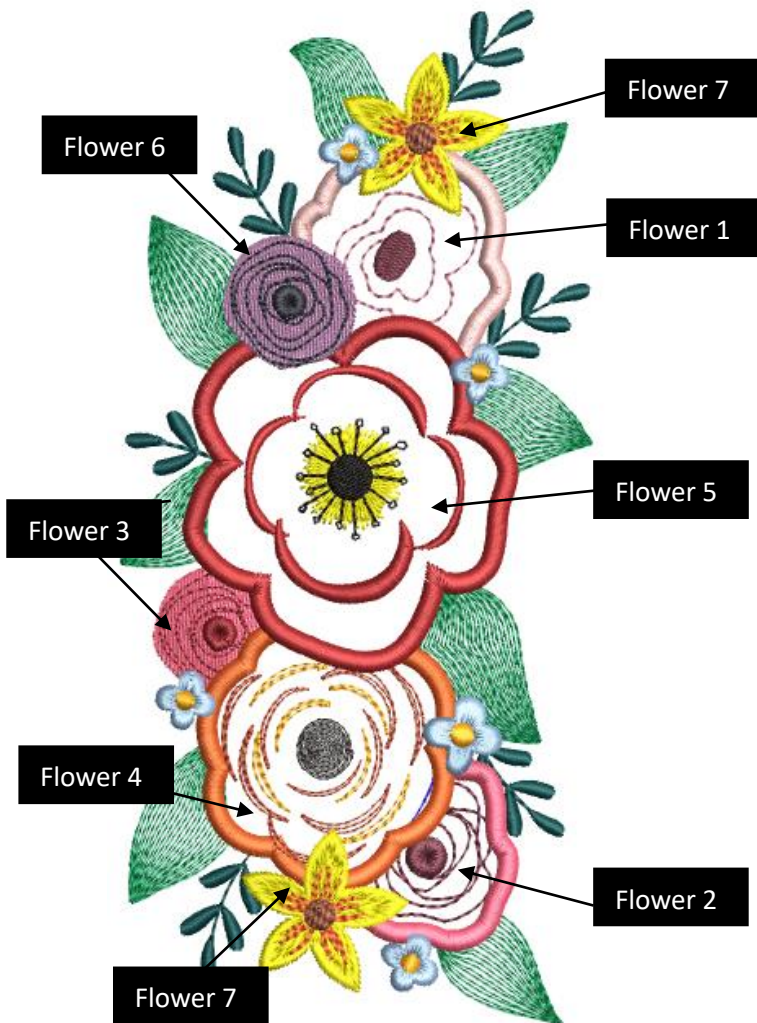
STEP 5 Fold the fabric over, hold taut and stitch down. Do not trim.



STEPS 6-8 Repeat the applique process for the book using **Fabric C**, Trim. Then embroider the satin stitch around it.



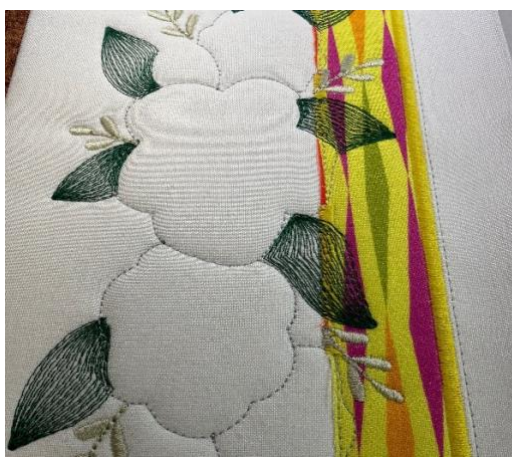
Floral Diagram – use as a reference for the following steps.



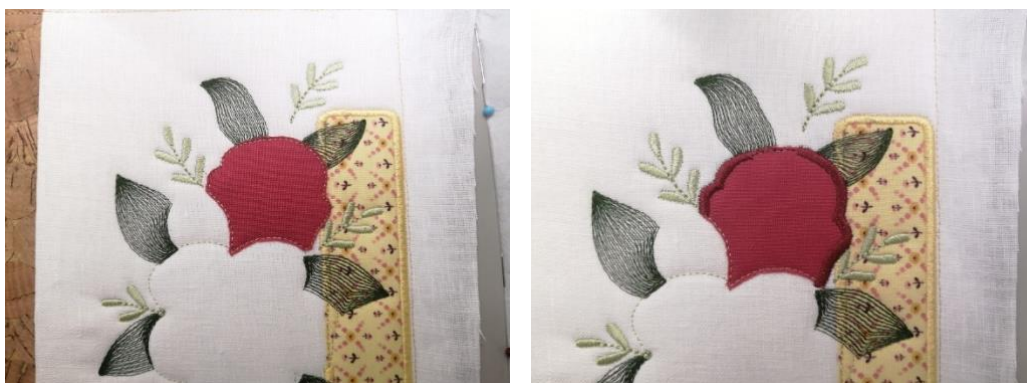
STEPS 9 & 10 Embroider the leaves and then the sprigs.



STEP 11 Stitch the placement lines for the flowers.



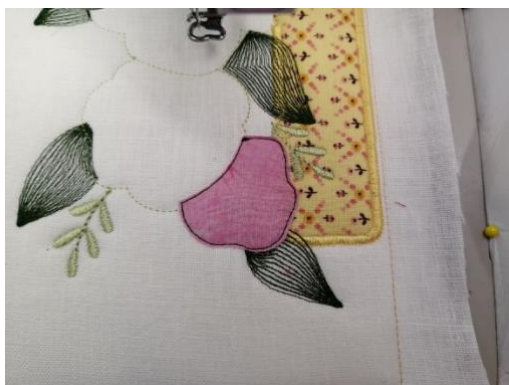
STEPS 12 & 13 Place **Fabric D** right side up on top of the hoop covering the placement line for **Flower 1**. Stitch down. Trim. Then embroider the satin stitch around the flower.



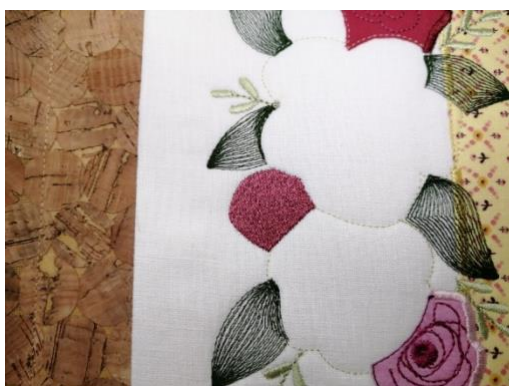
STEPS 14 & 15 Embroider the detail on **Flower 1**, and then the centre.



STEPS 16-18 Repeat the stitch down process with **Flower 2** using **Fabric E**. Trim. Then embroider the detailing on the flower and then the satin stitch around it.



STEPS 19 & 20 Embroider **Flower 3**, and then the detailing on the flower.



STEPS 21 & 22 Repeat the stitch down process with **Flower 4** using **Fabric F**. Trim. Then embroider the satin stitch around the flower.



STEPS 23-25 Embroider the centre on **Flower 4**, and then the darker detail, and then the lighter detail.



STEPS 26 & 27 Repeat the stitch down process with **Flower 5** using **Fabric G**. Trim. Then embroider the satin stitch around the flower.



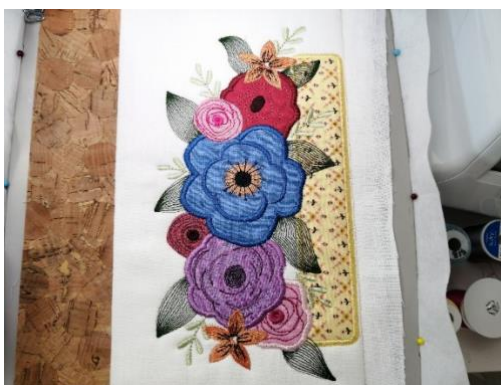
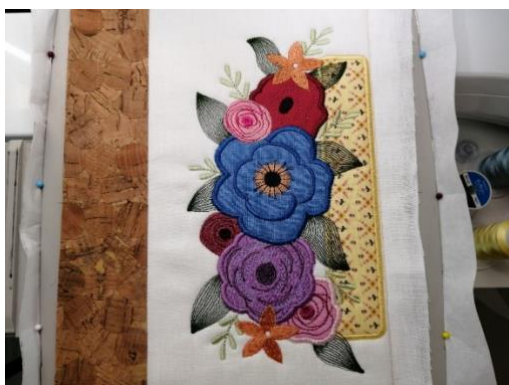
STEPS 28 & 29 Embroider the centre on **Flower 5**, and then the pollen.



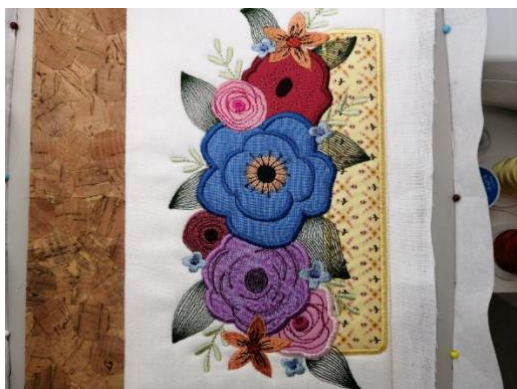
STEPS 30 & 31 Embroider **Flower 6**, and then the detailing on the flower.



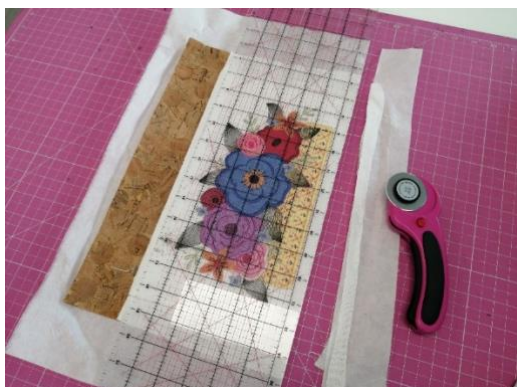
STEPS 32-34 Embroider two **Flower 7**, and then the detailing on the flowers, and then the centres.



STEPS 35 & 36 Embroider the remaining little flowers and then their centres.



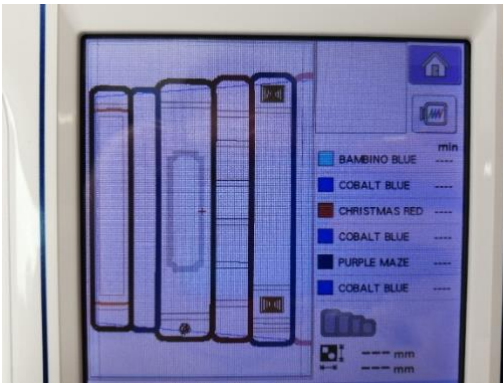
Remove from the hoop and trim the seams to about ½ an inch.



Hold aside until all your panels are made.

BOOKS MIDDLE PANEL

Hoop up **stabiliser** in the hoop. Load the design onto your machine. Use applique scissors for trimming the batting and fabric.



STEP 1 Place **Batting** on top of the hoop. Stitch the batting down. Remove the hoop from your machine and trim the batting about 1-2mm from the stitching.



STEP 2 Place **Fabric A** right side up on top of the hoop covering the batting. Stitch down.



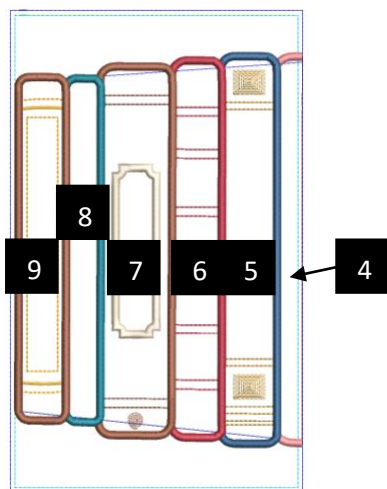
Remove the hoop from your machine and trim the fabric about 1-2mm from the stitching. Leave the excess fabric in the seams.



STEP 3 Stitch the placement lines for the books.



Book Diagram – use as a reference for the following steps.



STEP 4 Place **Fabric B** right side up on top of the hoop covering the placement line for **Book 4**. Stitch down. Trim. Leaving the fabric in the seams.



STEPS 5-9 Repeat the stitch down process for **Books 5-9** in numerical order using **Fabrics C-G**, Trim.





STEP 10 Embroider the satin stitch around the **Book 4**.



STEPS 11 & 12 Embroider the detail on the spine of **Book 5** and then the satin stitch around the book.



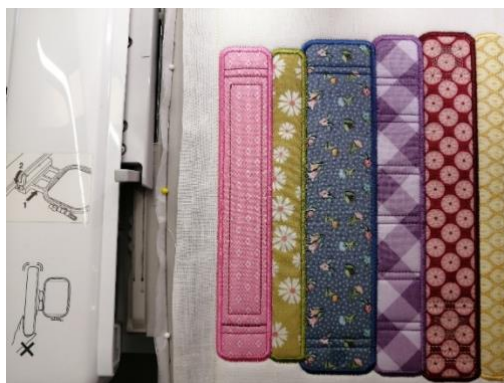
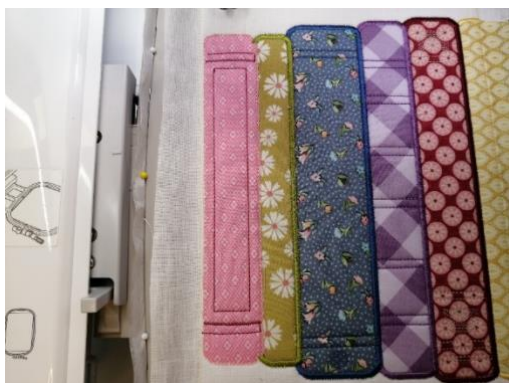
STEP 13 Embroider the detail and the satin stitch around the **Book 6**.



STEPS 14 & 15 Embroider the detail and the satin stitch around the **Book 7**, and then the satin stitch around **Book 8**.



STEPS 16 & 17 Embroider the detail on the spine of **Book 9** and then the satin stitch around the book.



STEPS 18-20 Repeat applique process for the label on the spine of **Book 7** using **a small piece of fabric**, Trim. Then embroider the satin stitch around it.



Optional: If you would like to add text to your book spines you can do so now using your machines text settings.

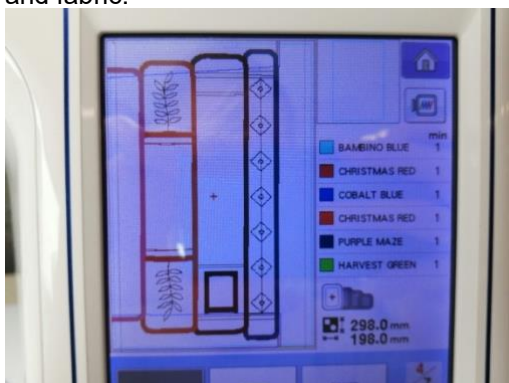
Remove from the hoop and trim the seams to about ½ an inch.



Hold aside until all your panels are made.

BOOKS BOTTOM PANEL

Hoop up **stabiliser** in the hoop. Load the design onto your machine. Use applique scissors for trimming the batting and fabric.



STEP 1 Place **Batting** on top of the hoop. Stitch the batting down. Remove the hoop from your machine and trim the batting about 1-2mm from the stitching.



STEP 2 Stitch the placement line for the background.



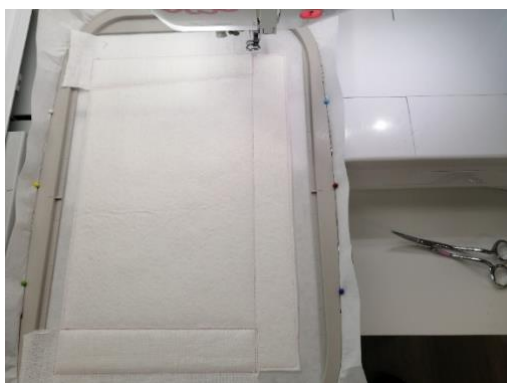
STEP 3 Place **Fabric A** right side up on top of the hoop covering the placement line. Stitch down.



Remove the hoop from your machine and trim the fabric about 1-2mm from the stitching. Leave the excess fabric in the seams.



STEP 4 Stitch the placement line for **Fabric B**.



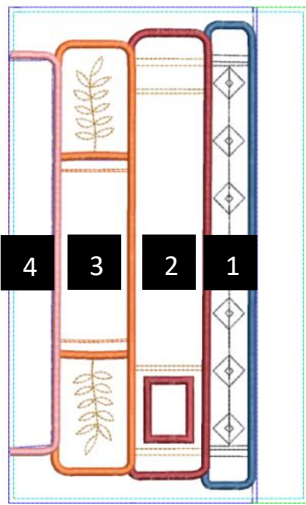
STEP 5 Place **Fabric B** on top of the hoop **wrong side up** crossing the placement line by 1/4" and with the excess fabric towards the left of the hoop. Stitch down.



STEP 6 Fold the fabric over, hold taut and stitch down.



Book Diagram – use as a reference for the following steps.



STEP 7 Stitch the placement lines for the bottom two books (1 & 2).



STEP 8 Place **Fabric C** right side up on top of the hoop covering the placement line for **Book 1**. Stitch down. Trim.



STEP 9 Repeat the stitch down process for **Book 2** using **Fabric D**, Trim.



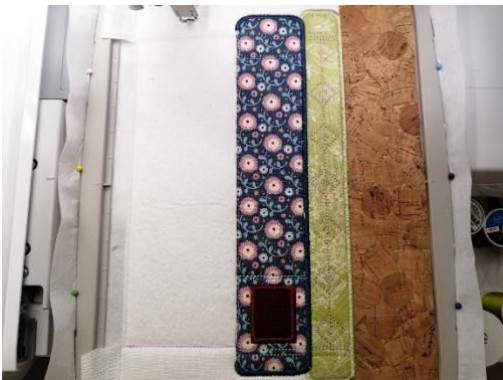
STEPS 10-12 Repeat applique process for the image on the spine of **Book 2** using **a small piece of fabric**, Trim. Then embroider the satin stitch around it.



STEPS 13 & 14 Embroider the detail on the spine of **Book 1** and then the satin stitch around the book.



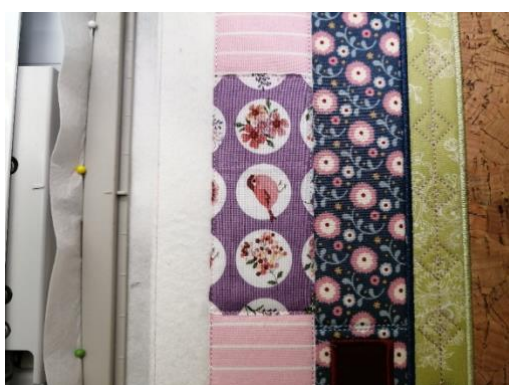
STEPS 15 & 16 Embroider the detail on the spine of **Book 2** and then the satin stitch around the book.



STEPS 17 & 18 Repeat applique process for the ends on the spine of **Book 3** using **Fabric E**. Trim.



STEPS 19 & 20 Repeat applique process for the middle on the spine of **Book 3** using **Fabric F**. Trim.



STEPS 21 & 22 Repeat applique process for **Book 4** using **Fabric G**. Trim.



STEPS 23 & 24 Embroider the detail on the spine of **Book 3** and then the satin stitch around the book.



STEP 25 Embroider the satin stitch around the **Book 4**.



Optional: If you would like to add text to your book spines you can do so now using your machines text settings.

Remove from the hoop and trim the seams to about ½ an inch.



Hold aside until all your panels are made.

USING YOUR REGULAR SEWING MACHINE:

JOIN ALL THE PANELS

Lay out your hanger in the correct order, with the long edges of the panels together.



Place the first two panels **right sides** together.



Pin and sew a half inch seam, sewing just inside the border lines already on the panels.



Open out the seam and iron flat.

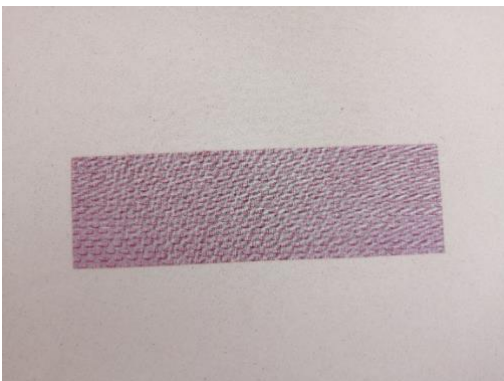


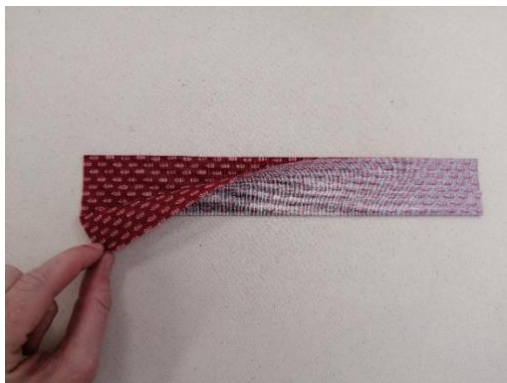
Then continue joining the last panel in the same fashion.



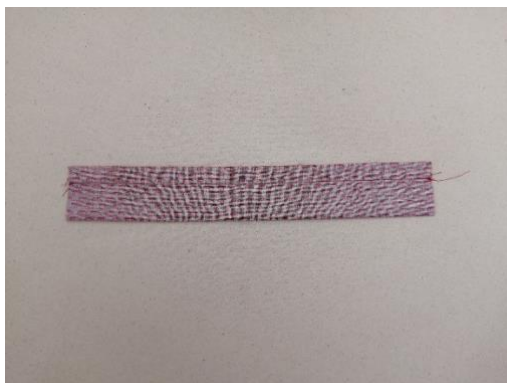
ADD THE LOOPS FOR HANGING

Take out **Fabric H** for the loops and fold the two longer edges widthways. Stitch a ½ inch (12.5mm") seam to create a tube.





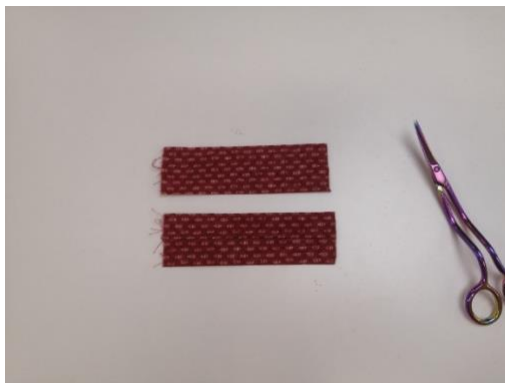
Open the seam, and then, using the tip of the iron, press this seam open.



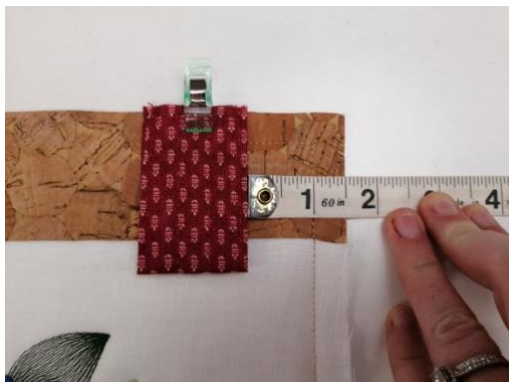
Turn the loop through to the right side and press flat, leaving the joining seam in the middle on the underside of the loop. Edgestitch or topstitch, if desired. Make sure the bobbin is the same colour as your top thread. Ensure the loops are even or trim them to the desired length.



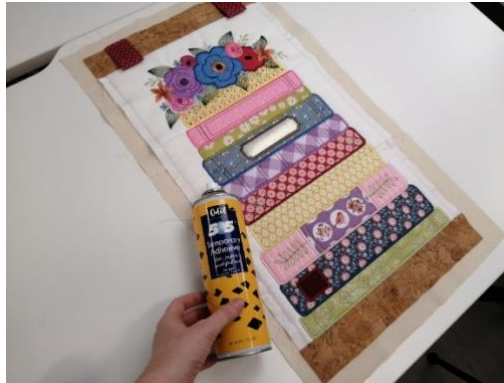
Fold in half lengthways and cut. This will give you your two loops. Fold in half lengthways again and iron—clip to secure. Machine baste the ends together.



Pin them both to the hanger. **(We decided to place the loops 1" (2.5cm) from the border stitching of the hanger. This will depend on the type of hanger you are using).** Stay stitch the loops in place.



We added a piece of optional calico (muslin) onto the back of the hanger to address using a white backing. This strategy aims to conceal the exposed seams by preventing the colours from being visible through the white backing fabric. To attach the calico, we opted for a temporary spray adhesive. You only need to do this step if you are using a white or light-coloured fabric for your backing.



With the right side of the work facing up, stitch the calico (muslin) to the front using the original perimeter stitching line as a guide. This will show the correct seam allowance on the underside of the work and be your guide for the following steps. Trim the edges so it is the exact same size as the hanger.

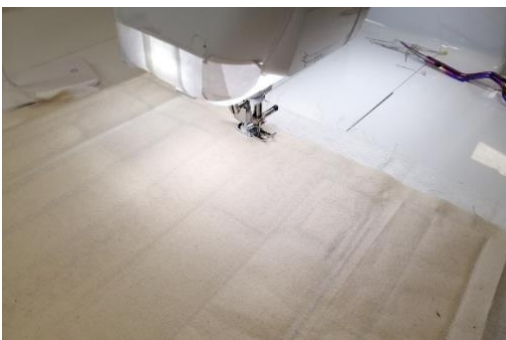


CUT THE BACKING

Place **Fabric I (backing)** on your table **right side up**. Place your sewn flag on top of **Fabric I right sides** together. Pin together, leaving an opening of about 13cm (5 inches) for turning.



Stitch the seam, sewing just inside the border lines already on the panels, remembering to leave the opening.



Trim the seams to ¼", and ½" where the opening is, so it is easier to hand stitch it closed later. Clip the corners for more pointed ones when turned.



Then turn the right way out through the opening. Use a chopstick or That Pink Thang to help push out the corners. Press.



Hand stitch (or use fabric glue) the opening closed. Optional: Stitch in the ditch of the seams to attach the backing.



You have now finished your wall hanging. Enjoy!

