

Chloe Crossbody Bag



5x7 6x10 8x12 9.5x14

Sweet Pea 
MACHINE EMBROIDERY

Chloe Crossbody Bag 5x7 6x10 7x12 and 9.5x14 Instructions

FABRIC REQUIREMENTS

5x7 (13cm x 18cm) Hoop

BACK PANEL

Fabric A – 18cm x 23cm (7" x 9") background

BAG BODY

Fabric A – 18cm x 8cm (7" x 3") bottom of zipper

Fabric B – 10cm x 10cm (4" x 4") left triangle

Fabric C – 10cm x 10cm (4" x 4") right triangle

Fabric D – 18cm x 12cm (7" x 4.5") bottom section

Fabric E – 18cm x 6.5cm (7" x 2.5") top zipper

Lining 1 – 18cm x 17cm (7" x 6.5") bottom zipper lining

Lining 2 – 18cm x 6.5cm (7" x 2.5") top zipper lining

Lining 3 – 18cm x 23cm (7" x 9") back lining

Batting 1– 18cm x 23cm (7" x 9") front

Batting 2 – 18cm x 23cm (7" x 9") back

OPTIONAL: Bag stiffener/cutaway stabiliser – 18cm x 23cm (7" x 9") front

OPTIONAL: Bag stiffener /cutaway stabiliser – 18cm x 23cm (7" x 9") back

1 x Nylon dress zipper – 18cm (7") or longer and at least 1" (2.5cm) in width or larger

REST OF THE BAG

OPTIONAL: Fabric F – 5cm x 15cm (2" x 6") loop fabric – depending on Dring size

OPTIONAL: Fabric G – 5cm x 132cm (2" x 52") main strap fabric

Or store bought strap

OPTIONAL: Iron on-fusible interfacing for the inside of the shoulder strap (could use strip/s of bag stabiliser)

OPTIONAL: D-Rings x 2 for Loops

OPTIONAL: Lobster clasp x 2 for Strap and Strap slide Square D-ring x 1 (we used 12.5mm or ½" width)

6x10 (16cm x 26cm) Hoop

BACK PANEL

Fabric A – 20cm x 30cm (8" x 12") background

BAG BODY

Fabric A – 20cm x 9cm (8" x 3.5") bottom of zipper

Fabric B – 13cm x 13cm (5" x 5") left triangle

Fabric C – 13cm x 13cm (5" x 5") right triangle

Fabric D – 20cm x 15cm (8" x 6") bottom section

Fabric E – 20cm x 6.5cm (8" x 2.5") top zipper

Lining 1 – 20cm x 23cm (8" x 9") bottom zipper lining

Lining 2 – 20cm x 6.5cm (8" x 2.5") top zipper lining

Lining 3 – 20cm x 30cm (8" x 12") back lining

Batting 1– 20cm x 30cm (8" x 12") front

Batting 2 – 20cm x 30cm (8" x 12") back

OPTIONAL: Bag stiffener/cutaway stabiliser – 20cm x 30cm (8" x 12") front

OPTIONAL: Bag stiffener /cutaway stabiliser – 20cm x 30cm (8" x 12") back

1 x Nylon dress zipper – 20cm (8") or longer and at least 1" (2.5cm) in width or larger

REST OF THE BAG

OPTIONAL: Fabric F – 5cm x 15cm (2" x 6") loop fabric – depending on Dring size

OPTIONAL: Fabric G – 5cm x 132cm (2" x 52") main strap fabric

Or store bought strap

OPTIONAL: Iron on-fusible interfacing for the inside of the shoulder strap (could use strip/s of bag stabiliser)

OPTIONAL: D-Rings x 2 for Loops

OPTIONAL: Lobster clasp x 2 for Strap and Strap slide Square D-ring x 1 (we used 12.5mm or ½" width)

8x12 (20cm x 30cm) Hoop

BACK PANEL

Fabric A – 25cm x 35cm (10" x 14") background

BAG BODY

Fabric A – 25cm x 13cm (10" x 5") bottom of zipper

Fabric B – 17cm x 17cm (6.5" x 6.5") left triangle

Fabric C – 17cm x 17cm (6.5" x 6.5") right triangle

Fabric D – 25cm x 19cm (10" x 7.5") bottom section

Fabric E – 25cm x 8cm (10" x 3") top zipper

Lining 1 – 25cm x 28cm (10" x 11") bottom zipper lining

Lining 2 – 25cm x 8cm (10" x 3") top zipper lining

Lining 3 – 25cm x 35cm (10" x 14") back lining

Batting 1– 25cm x 35cm (10" x 14") front

Batting 2 – 25cm x 35cm (10" x 14") back

OPTIONAL: Bag stiffener/cutaway stabiliser – 25cm x 35cm (10" x 14") front

OPTIONAL: Bag stiffener /cutaway stabiliser – 25cm x 35cm (10" x 14") back

1 x Nylon dress zipper – 25cm (10") or longer and at least 1" (2.5cm) in width or larger

REST OF THE BAG

OPTIONAL: Fabric F – 5cm x 15cm (2" x 6") loop fabric – depending on Dring size

OPTIONAL: Fabric G – 5cm x 132cm (2" x 52") main strap fabric

Or store bought strap

OPTIONAL: Iron on-fusible interfacing for the inside of the shoulder strap (could use strip/s of bag stabiliser)

OPTIONAL: D-Rings x 2 for Loops

OPTIONAL: Lobster clasp x 2 for Strap and Strap slide Square D-ring x 1 (we used 12.5mm or ½" width)

9.5x14 (24cm x 36cm) Hoop

BACK PANEL

Fabric A – 29cm x 41cm (11.5" x 16") background

BAG BODY

Fabric A – 29cm x 15cm (11.5" x 6") bottom of zipper

Fabric B – 19cm x 18cm (7.5" x 7") left triangle

Fabric C – 19cm x 18cm (7.5" x 7") right triangle

Fabric D – 29cm x 22cm (11.5" x 8.5") bottom section

Fabric E – 29cm x 9cm (11.5" x 3.5") top zipper

Lining 1 – 29cm x 32cm (11.5" x 12.5") bottom zipper lining

Lining 2 – 29cm x 9cm (11.5" x 3.5") top zipper lining

Lining 3 – 29cm x 41cm (11.5" x 16") back lining

Batting 1– 29cm x 41cm (11.5" x 16") front

Batting 2 – 29cm x 41cm (11.5" x 16") back

OPTIONAL: Bag stiffener/cutaway stabiliser – 29cm x 41cm (11.5" x 16") front

OPTIONAL: Bag stiffener /cutaway stabiliser – 29cm x 41cm (11.5" x 16") back

1 x Nylon dress zipper – 30cm (12") or longer and at least 1" (2.5cm) in width or larger

REST OF THE BAG

OPTIONAL: Fabric F – 5cm x 15cm (2.5" x 6") loop fabric – depending on Dring size

OPTIONAL: Fabric G – 5cm x 132cm (2.5" x 52") main strap fabric

Or store bought strap

OPTIONAL: Iron on-fusible interfacing for the inside of the shoulder strap (could use strip/s of bag stabiliser)

OPTIONAL: D-Rings x 2 for Loops

OPTIONAL: Lobster clasp x 2 for Strap and Strap slide Square D-ring x 1 (we used 19mm or 3/4" width)

Finished Dimensions (approx.):

5x7 – 8cmW x 13cmL x 2.5cmD (3" x 5" x 1.5")

6x10 - 10cmW x 20cmL x 5cmD (4" x 8" x 2")

8x12 - 13cmW x 21cmL x 6.5cmD (5" x 8.5" x 2.5")

9.5x14 - 15cmW x 28cmL x 6.5cmD (6" x 11" x 2.5")

NOTE: If you have decided to make this project with Leather, Faux Leather, Vinyl, Cork, PVC (clear plastic) or any combination of these, please refer to our guide with extra tips on how use these materials here - <https://swpea.com.au/blogs/machine-embroidery-blogs/tips-when-using-pu-leather-in-machine-embroidery>

Sweet Pea Machine Embroidery Designs Design Files Disclaimer-

Please note to customers who use embroidery software to open our files. In doing so, you may run the risk of the design not stitching as intended by our digitiser's instructions.

We highly recommend that any design file purchased from us should be downloaded as per our "how to download our designs" instructions on our website and placed directly onto a USB/memory card and then placed directly onto the embroidery machine.

We will not be obligated to provide compensation to customers who have put our files through their software and the resulting stitch out was not as intended.

INSTRUCTIONS USING YOUR REGULAR SEWING MACHINE

OPTIONAL: ATTACHING THE STRAPS AND D-RING LOOPS

Adding the straps and D-Ring Loops to your clutch is completely optional. Skip this section if you do not wish to add these to your clutch.

You will need to cut your fabric as shown below:

1 x Strip of fabric for the bag strap **5cm x 101.5cm (2" x 40")** - but you can make this any length if you like.

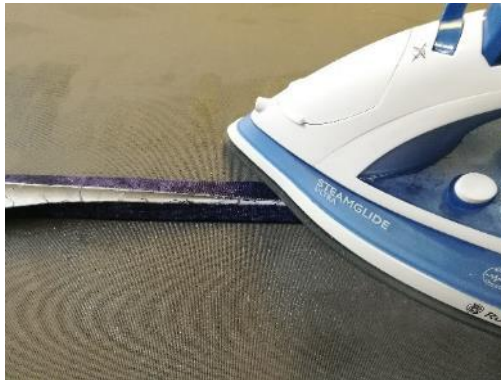
2 x Lobster clasps, if making your own strap

OR 1 x Store bought strap, if not making homemade strap

1 x Loop for D-ring **4cm x 18cm (1½" x 7")** or you can use **ribbon** *size depending on the width of the D-Ring.

2 x D-rings

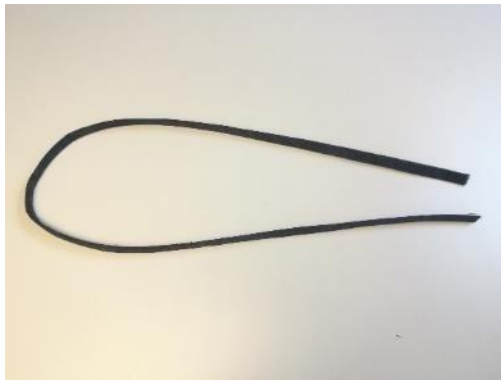
Fold both the edges into the middle crease and iron.



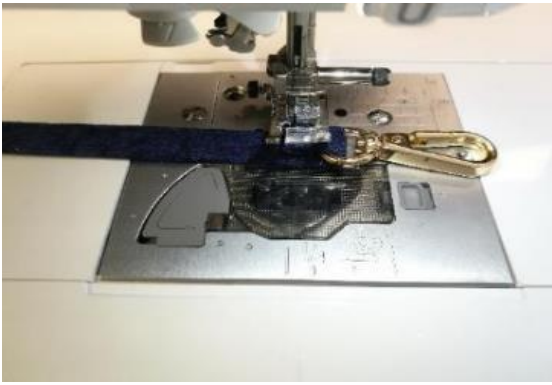
Fold again in half lengthways and iron.



Topstitch along the two long edges. **Use a bobbin that is the same colour as your top thread.**



If you are using lobster clasps, you can add them to the ends of your strap now.



MAKE THE LOOPS FOR THE SHOULDER STRAP

Below are instructions on how to make the D-ring loops for your bag. You can alternatively use cord or ribbon or leave them off completely if you wish to turn your bag more into a storage case.

Take **Fabric F** and fold in half, widthways, with the wrong sides together. Iron the fold. Unfold.



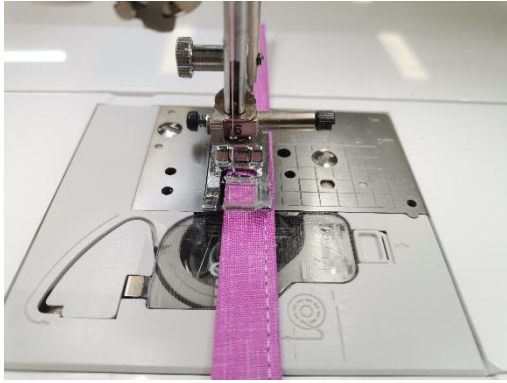
Fold both the edges into the middle crease and iron.



Fold again in half lengthwise. Iron. Clip.



Edge-stitch the edges together; repeat for the other side for a more even look (use a matching bobbin to the top thread). Fold your piece of fabric in half and cut. Now you will have two 3-inch pieces. Fold your piece of fabric in half and then use a pair of scissors to cut the fold



Fold your piece of fabric in half. Put through the D-ring. Stay stitch together. Hold aside.



USING YOUR EMBROIDERY MACHINE:

For tips on how to correctly hoop your stabiliser, go to <https://swpea.com/blogs/machine-embroidery-blogs/tips-for-stabiliser-in-the-hoop>

MAKE THE BACK PANEL FIRST

Hoop **cutaway stabiliser**. Load design onto your machine. Use applique scissors for trimming the fabric.



STEP 1 Place **Batting 1** and/or optional cutaway or bag stiffener (underneath batting) on the hoop. Stitch the batting down.



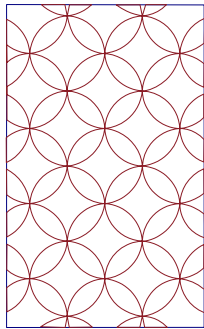
Remove the hoop from your machine and trim the batting and/or optional cutaway/bag stiffener about 1-2mm from the stitching.



STEP 2 Place **Fabric A**, right side up, on top of the hoop covering the batting and stitch down.



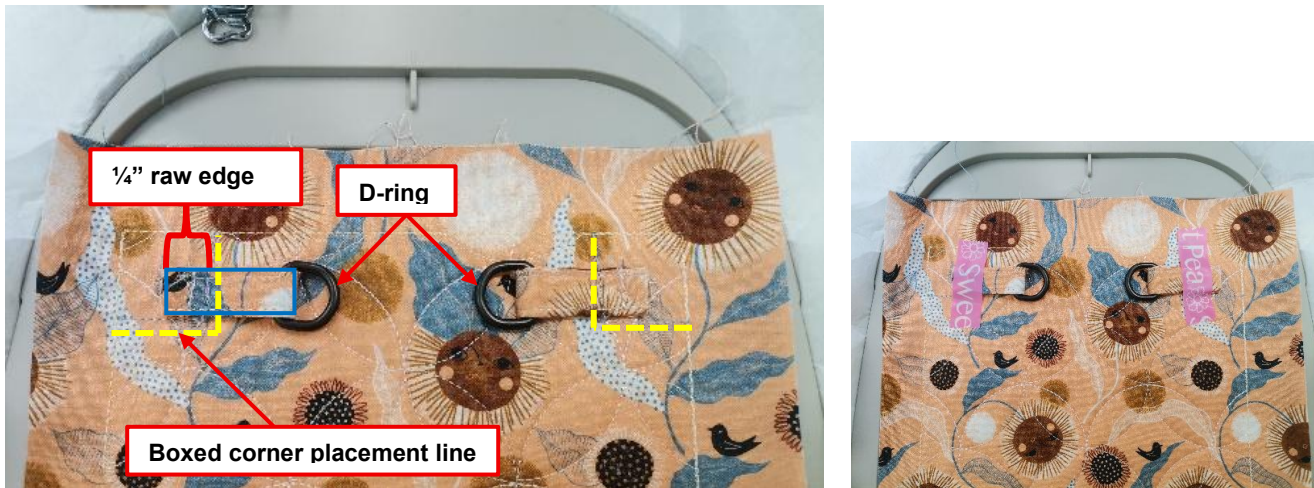
STEP 3 Embroider the quilting.



STEP 4 Stitch the placement lines for the box corners. These will also be used as placement lines for the loops.



OPTIONAL: STEP 5 Place the loops over the top boxed corner placement line stitches – along the stitching closest to the centre. Place the loops centred with the raw edges facing towards the outside of the hoop crossing over the placement about ¼” and the D-ring towards the centre (see below). Tape in place and stitch down. Remove tape. – **skip this step if you’re not adding loops.**

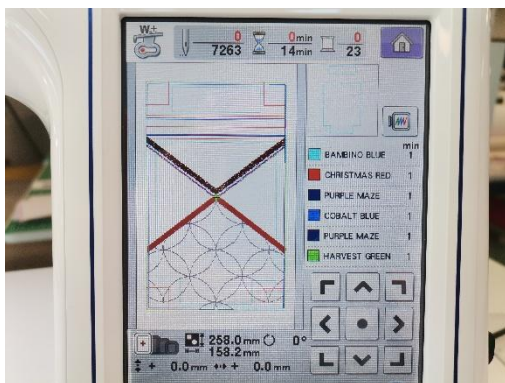


Remove your work from the hoop. Trim your seams to about ½ inch.



BAG BODY

Hoop **tearaway stabiliser** or a few layers of **water soluble stabiliser (the woven variety works the best)**. Load design onto your machine. Use applique scissors for trimming the batting and fabric.



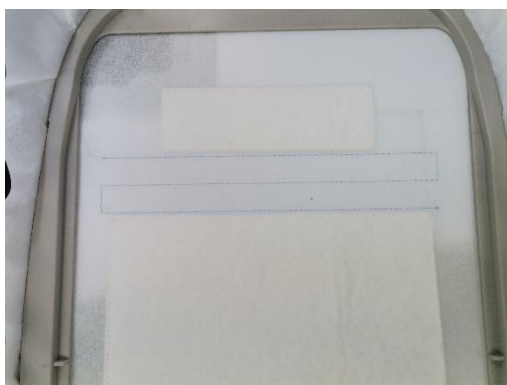
STEP 1 Place **Batting 1** and/or optional cutaway or bag stiffener (underneath batting) on the hoop. Stitch the batting down.



Remove the hoop from your machine and trim the batting and/or optional cutaway/bag stiffener about 1-2mm from the stitching.



STEP 2 Stitch the zipper placement line.



Place the zipper **right side** up centred on the placement line, with the pull hanging past the side of the hoop. The zipper will be too long, but this can be trimmed later when you trim the seam. Tape in place.



STEP 3 Stitch the zipper to the stabiliser. Remove the tape.

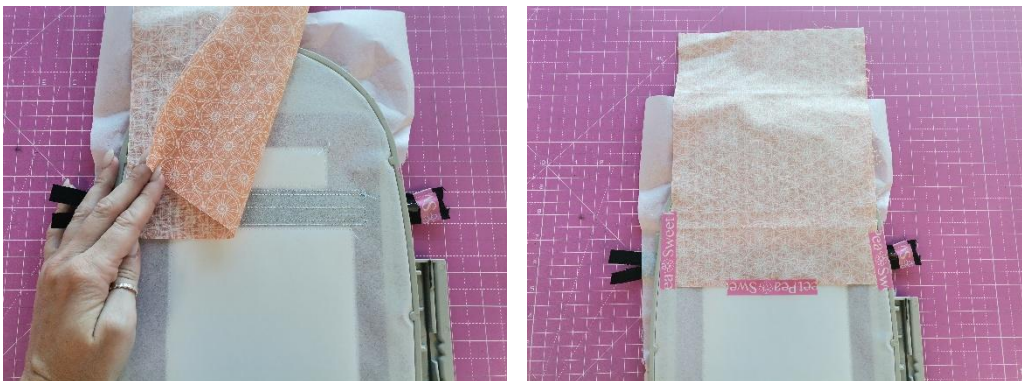


STEP 4 Using the bottom stitch down of the zipper as a placement line, place **Fabric A** on top of the hoop **wrong side up** with $\frac{1}{4}$ " crossing over the placement line and the excess pointing towards the top of the hoop. Stitch down.



Remove the hoop from the machine and **FLIP** it over so the wrong side of the hoop is facing up.

STEP 5 Using the bottom stitch down of the zipper as a placement line, place **Lining 1** on top of the wrong side of the hoop **wrong side up** with $\frac{1}{4}$ " crossing over the placement line and the excess pointing towards the top of the hoop. Tape in place. Stitch down.



STEP 6 Fold over, hold taut and stitch down **Fabric A**. Leave **Lining 1** in position at this stage.



Remove the hoop from the machine and trim the fabric from the bottom 1-2 mm from the stitching, leaving the excess fabric in the seams.



STEP 7 Stitch the placement line for the triangle on the left.



STEP 8 Place **Fabric B** on top of the hoop wrong side up with $\frac{1}{4}$ ' crossing over the placement line and the excess pointing towards top right corner of the hoop. Stitch down.



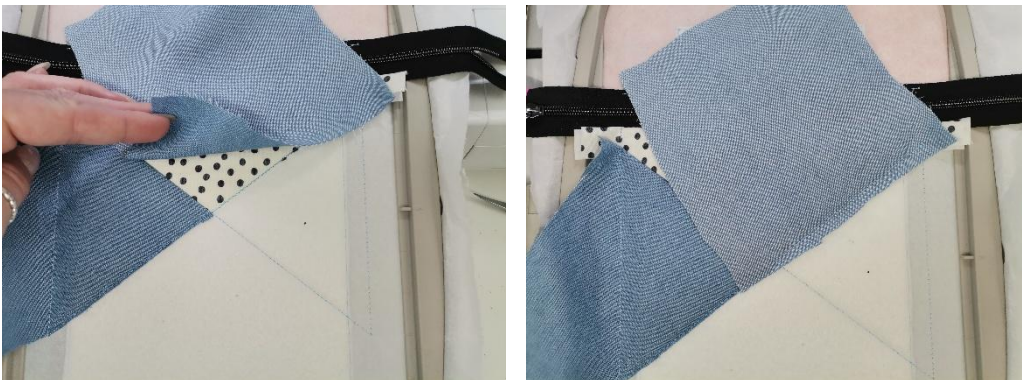
STEP 9 Fold over, hold taut and stitch down. Trim, leaving the excess fabric in the seams.



STEP 10 Stitch the placement line for the triangle on the right



STEP 11 Place **Fabric C** on top of the hoop wrong side up with ¼' crossing over the placement line and the excess pointing towards top left corner of the hoop. Stitch down.



STEP 12 Fold over, hold taut and stitch down. Trim, leaving the excess fabric in the seams.

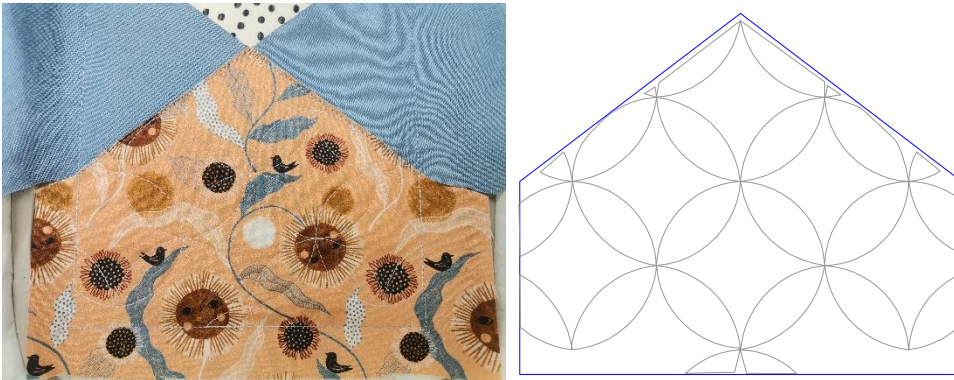


STEP 13 Stitch the placement line for the bottom section.

STEP 14 Place **Fabric D** on top of the hoop right side up covering the placement line. Stitch down and trim leaving the fabric in the seams.



STEP 15 Embroider the quilting.



STEP 16 Embroider the satin stitch along the top of the bottom section.



STEP 17 Embroider the stitching along **Fabric A**.



STEP 18 Remove the hoop and turn over to the back side. Fold over **Lining 1**. Tape to secure. Return hoop to the machine and stitch down.



We will add **Lining 2** to the back of the hoop. First take out the hoop from the machine and flip the hoop over so the wrong side of the hoop is facing up. Using the top stitching line of the zipper as a placement line, place **Lining 2** on top of the wrong side of the hoop wrong side up with $\frac{1}{4}$ " crossing over the placement line and the excess fabric pointing towards the bottom of the hoop. Tape in place.



Now flip the hoop over to the right side of the hoop, and place **Fabric E** on top of the right side of the hoop wrong side up with $\frac{1}{4}$ " crossing over the same placement line as **Lining 2** and the excess pointing towards the bottom of the hoop. Tape in place.



STEP 19 Stitch both fabrics down.



STEP 20 Fold over **Fabric E and Lining 2** so right sides are showing. Tape to secure and stitch down.



STEP 21 Stitch the placement lines for the box corners.



Now open your zipper pull to the centre of the zipper. Tape down the opening of the zipper at the edges of the border stitching so the embroidery foot does not catch on the folds.



STEP 22 Place **Back Panel** on top of the hoop wrong side up covering all the stitching. Hold into place and stitch down.



Flip the hoop over to the wrong side and place **Lining 3 wrong side up** to cover the perimeter stitching and secure with tape.

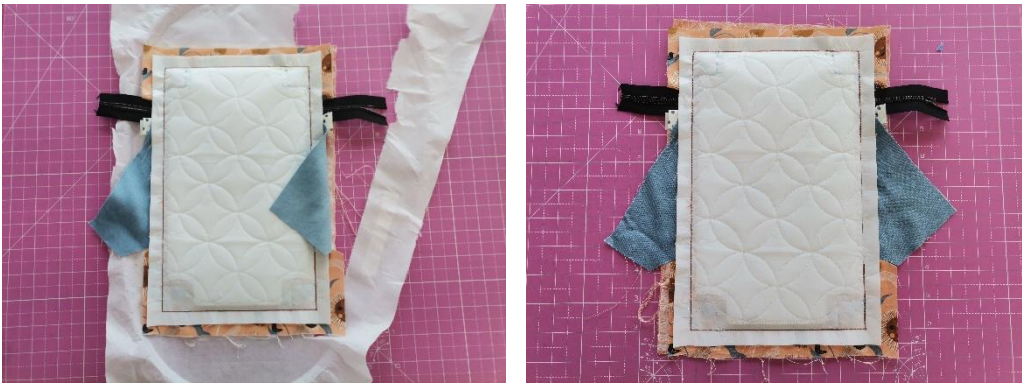


STEP 23 Stitch the **Lining 3** into place. (It will stitch a single stitch first and then go right into the triple stitch). An opening will be left at the bottom for turning.



STEP 24 DON'T STITCH THE STEP. This step is to stop the foot moving into the centre and potential getting caught. Remove your work from the hoop

Remove your work from the hoop. If you used tearaway stabiliser, rip out the stabiliser. If you used soluble stabiliser, wash it away.



Trim your seams to about ¼ inch, leaving about ½" of fabric along the opening. Clip and snip the corners.



Turn the bag out through the opening at the bottom. Use That Pink Thang or chopstick to push out the corners.



Lightly press flat. Hand stitch or use fabric glue to close the opening.



The bag will still be inside out. If you used tearaway stabiliser, rip out the stabiliser from the zipper.



Now that you have removed the stabiliser, you will need to turn the bag the right way out through the zipper. Use a chopstick to push out the corners. Press again.



USING YOUR REGULAR SEWING MACHINE:

BOXING THE CORNERS

We will complete the boxed corners in two different ways. Please read through both methods first. The French seam will only be on the Base Box Corners.

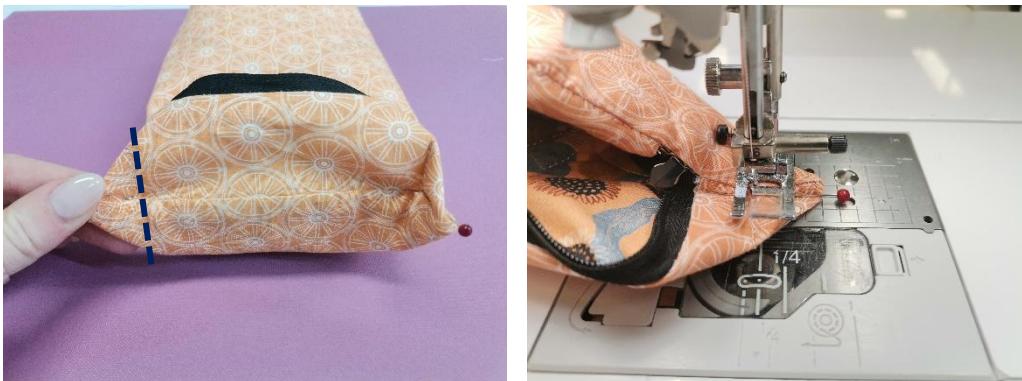
TOP BOX CORNERS

With your bag **right side out** and the back panel facing up, we are going to box the corners. Depending on how far in you placed your loops during the stitch-down on the back panel, you can trim any excess loop at an angle, so it does not get in the way when sewing the corners.



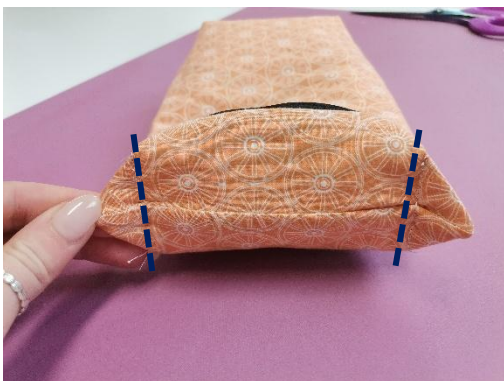
Turn your bag **inside out**, open one of the corners and finger press it flat so it forms a triangle. Take your time to ensure the side seam and bottom seam are aligned neatly on top of each other, then pin in place to secure.

Optional: Use a pen or chalk to mark a straight line across the triangle.



Using the placement line we have just marked, stitch your corner closed, backstitching at the start and end to secure.

Repeat for the remaining top corner. **DO NOT TRIM** as this is how we are going to leave our top boxed corners.



BASE BOXED CORNERS

Working with the bag **right side out**, use the placement lines for the boxed corners on the bottom of the bag. Open one of the corners and finger press it flat so it forms a triangle. Ensure the seams are aligned carefully on top of each other, then pin in place. Measure **1/4" (6 mm)** in from the placement stitching (towards the point of the triangle) and draw a guideline. Stitch along this line, making sure to backstitch at the beginning and end.



Trim **1/8 inch (3 mm)** from your stitching.



Turn your bag **inside out** and gently push out the corners. Roll and press the corner flat, aligning the seams neatly so the edge is crisp.



Sew the corner again **1/4" (6 mm)** across the edge, enclosing the raw seam to create a French seam finish. Repeat.



Turn your bag right side out and press. If you used D-rings on your clutch, attach your strap.



You have now finished your little bag. Enjoy!

