

Dinosaur Quilt



5x7 6x10 8x12

SweetPoa
MACHINE EMBROIDERY

Dinosaur quilt 5x7 6x10 or 8x12 instructions

Dinosaur Applique blocks

5x7 hoop (130mm x 180mm) hoop

Fabric A – 17cm x 22cm (7" x 9") background

Fabric B – 13cm x 18cm (5" x 7") dinosaur body

Fabric C – small pieces of fabric for applique

Batting 1 -17cm x 22cm (7" x 9")

6x10 hoop (160mm x 260mm) hoop

Fabric A – 20cm x 30cm (8" x 12") background

Fabric B – 16cm x 25cm (6" x 10") dinosaur body

Fabric C – small pieces of fabric for applique

Batting 1 -20cm x 30cm (8" x 12")

8x12 hoop (200mm x 300mm) hoop

Fabric A – 24cm x 34cm (10" x 14") background

Fabric B – 20cm x 30cm (8" x 12") dinosaur body

Fabric C – small pieces of fabric for applique

Batting 1 -20cm x 30cm (8" x 12")

Dinosaur Applique blocks Instructions

Hoop cutaway stabiliser in the 5x7 or 6x10 hoop depending on which size you are sewing



Load the design for the dinosaur applique quilt block.



Place **Batting 1** on top of the hoop



Place **Fabric A** on top of the hoop right side up.



STEP 1 stitch down.



Now start the applique.

Dinosaur 1

STEP 2 Stitch the placement line for the spine on the head/body.



Cut a piece of fabric large enough to cover the placement line. Place on top of the line right side up making sure the line is covered completely.



STEP 3 Stitch the fabric down



Remove the hoop from the machine and trim around the fabric (use applique scissors if you have them) 1-2mm from the stitching.



Return the hoop to the machine.

STEP 4 Embroider the satin stitch

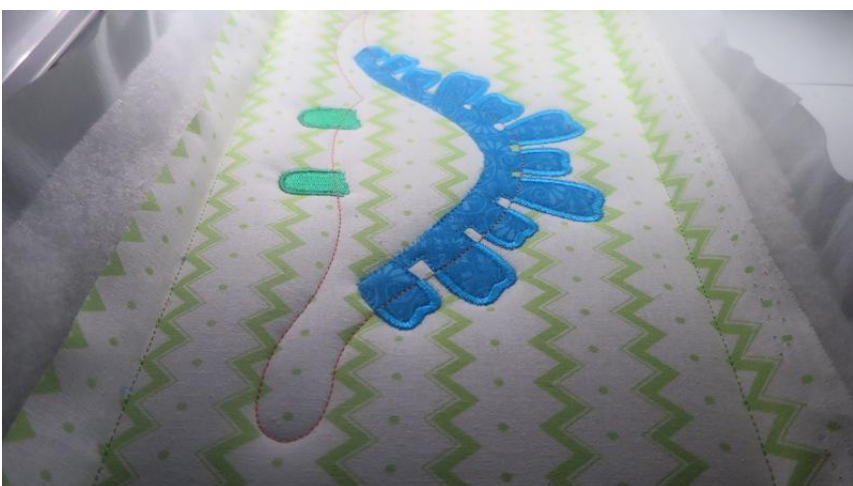


STEP 5 Embroider the back legs



Body

STEP 6 Stitch placement line



STEP 7 Stitch fabric down



Trim



STEP 8 Embroider the satin stitch



STEP 9 Embroider the front legs (*no front legs on this dinosaur but there are with others)

STEP 10 Embroider the white of the eyes



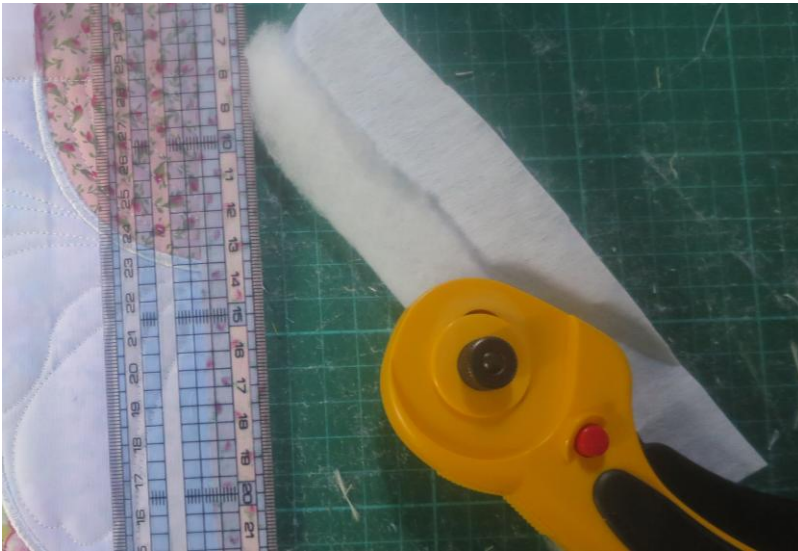
STEP 11 Embroider the black of the eyes



STEP 12 Embroider the spots



Remove your work from the hoop. Trim the batting out of the seams.



Trim the seams to about 1/2 an inch.



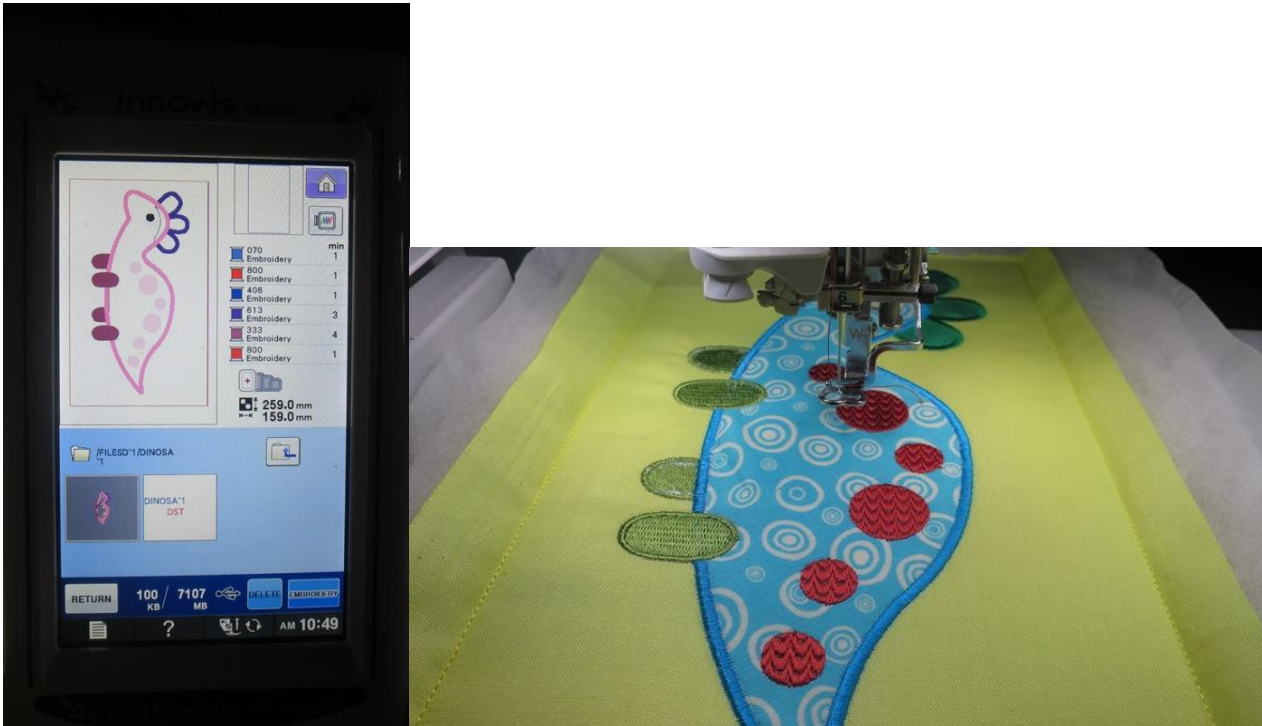
Dinosaur 2

Is the same as Dinosaur 1



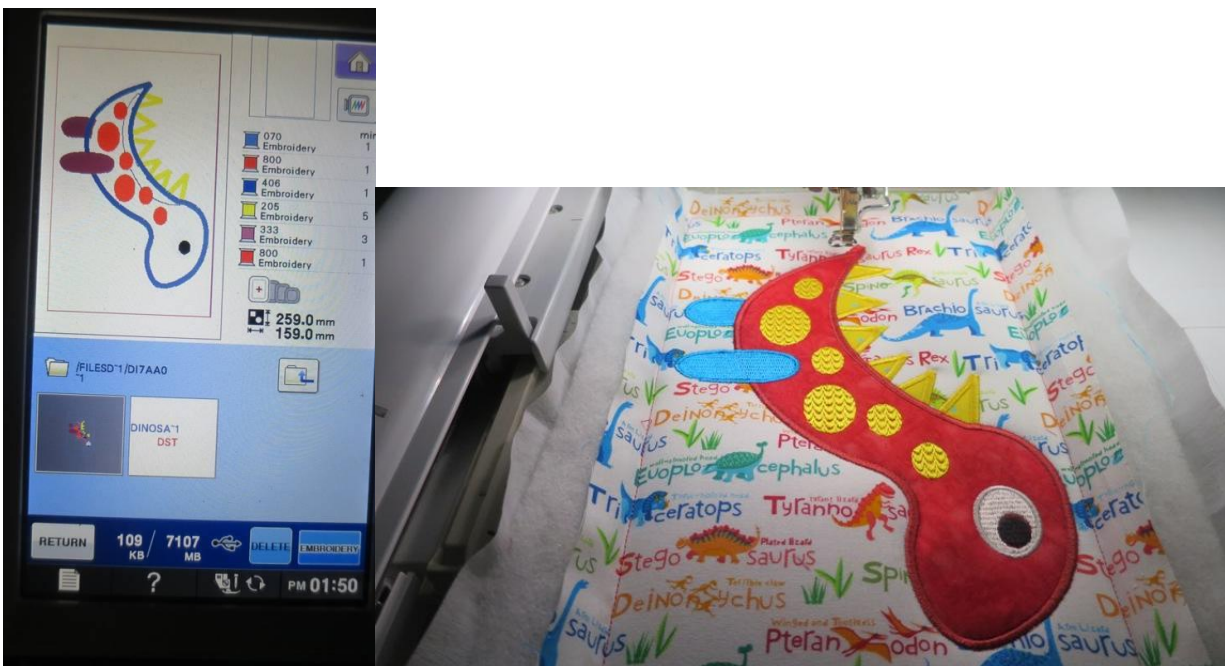
Dinosaur 3

Is the same as Dinosaur 1



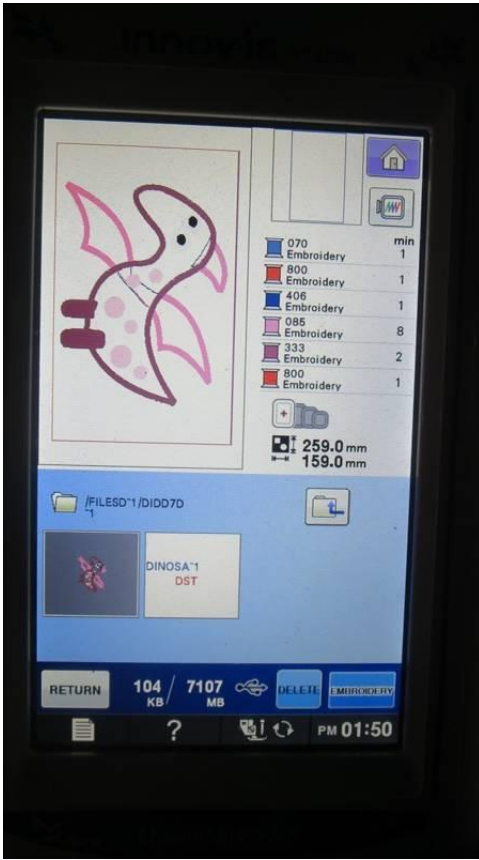
Dinosaur 4

Is the same as Dinosaur 1



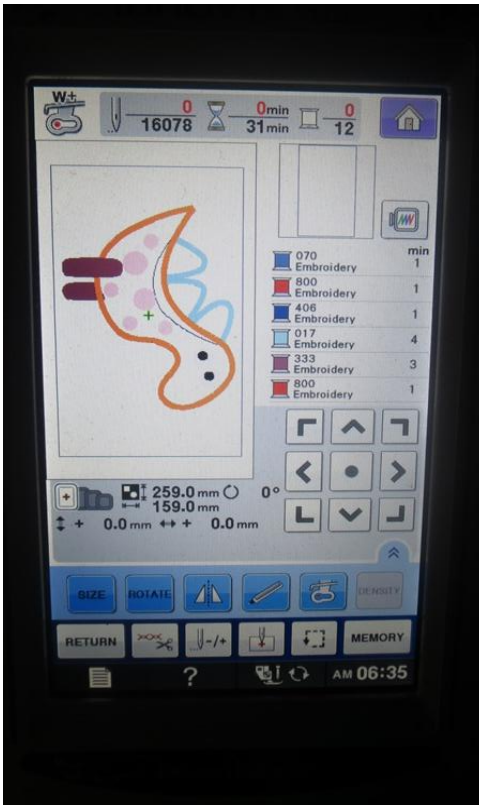
Dinosaur 5

Is the same as Dinosaur 1



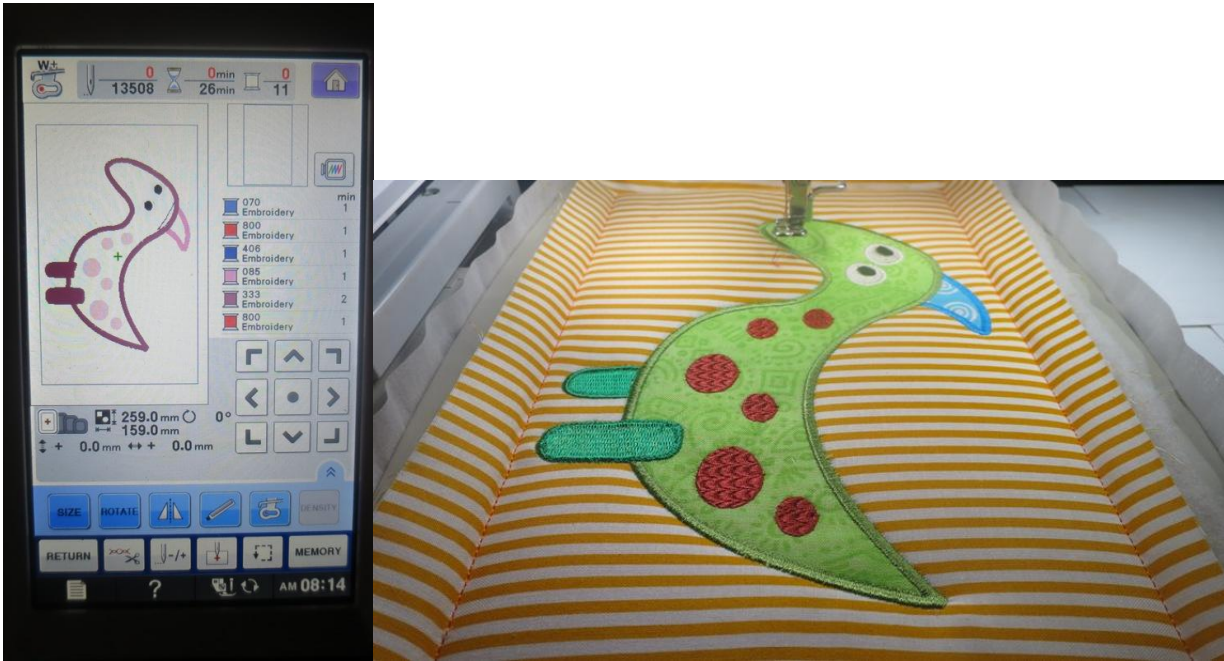
Dinosaur 6

Is the same as Dinosaur 1



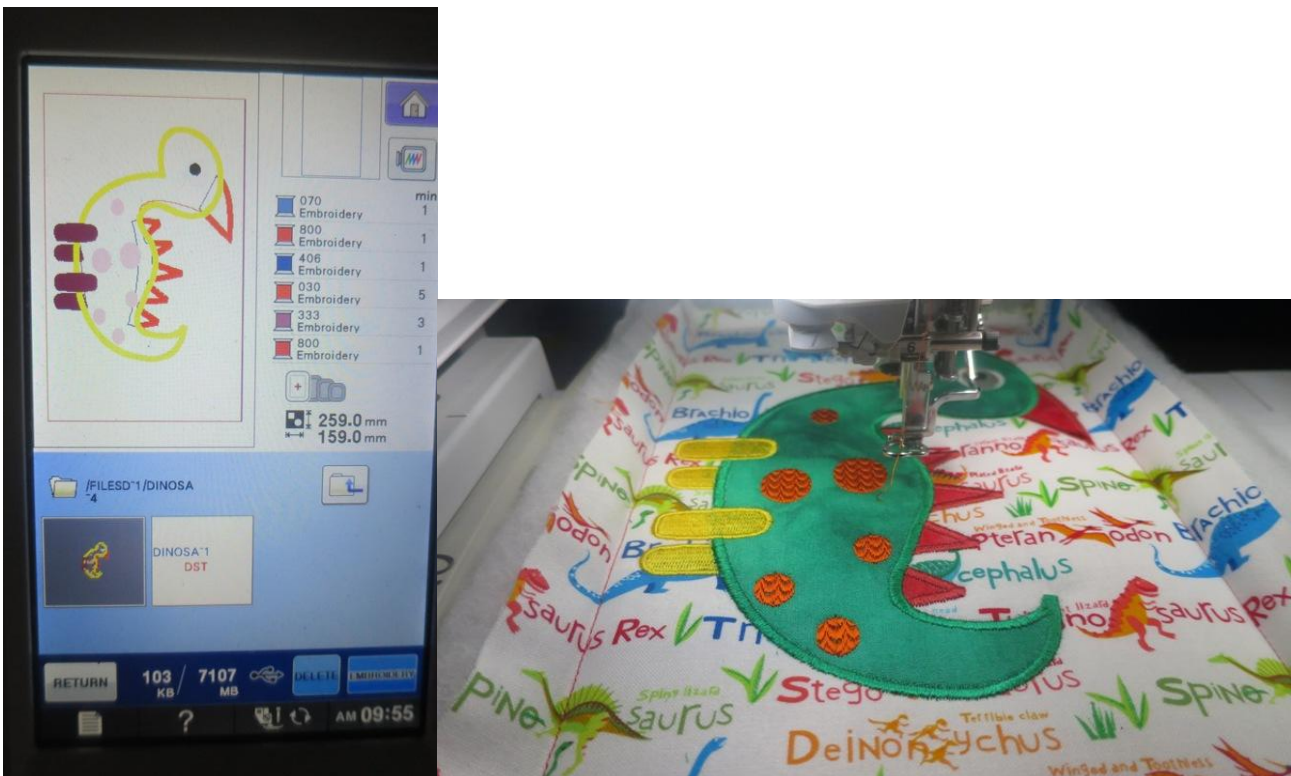
Dinosaur 7

Is the same as Dinosaur 1 except delete step 9 the front legs.



Dinosaur 8

Is the same as Dinosaur 1



How to add the sashing, borders and binding to the Dinosaur Quilt.

Trim all the blocks seams to about ½ an inch.

Arrange your blocks how you would like them.



First of all add the vertical sashing

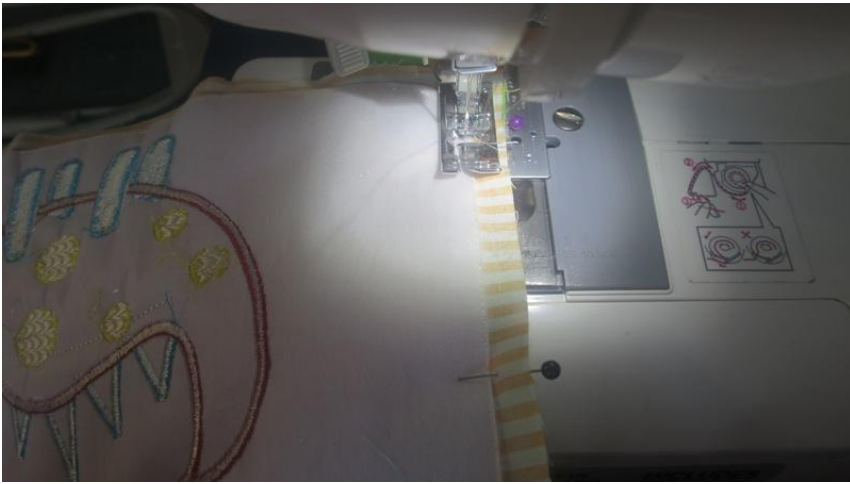
Measure the height of your quilt blocks. You will cut sashing strips of 5cm (2 inches) wide x this measurement to place between the blocks. Cut matching strips of batting. (do not use batting that is too thick or the seams won't sit flat).

The finished sashing will end up about 2cm (1") wide.

Place the quilt block and sashing right sides together and place the batting on top of the sashing. Line up the raw edges of the block and the sashing.



Pin and then sew the quilt blocks to the sashing and batting strips.



Stitch on the quilt block side so you can make sure your stitching is a couple of mm's inside the border stitching on the block so it isn't seen on the front of the quilt.

Press the seams toward the sashing.

After sewing your blocks and sashing strips together fold right side together.



Open the seams and press towards the sashing.

It is important to iron as you go.



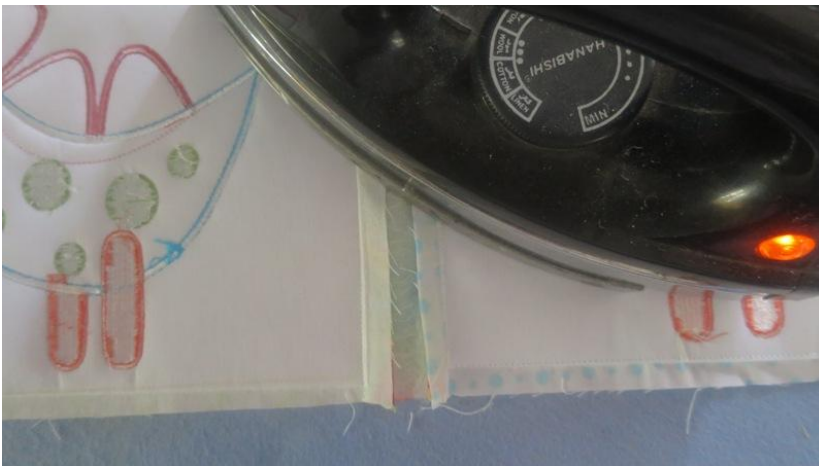
Repeat joining the next block. Place the sashing and block right sides together.

Pin and stitch with your sewing machine.



Continue until the whole row is finished.

Open the seams and press towards the sashing.



Add the horizontal sashing.

Measure the width of your horizontal rows. You will cut sashing strips of 5cm (2 inches) wide x this measurement to place between the row. Cut matching strips of batting. (do not use batting that is too thick or the seams won't sit flat).

The finished sashing will end up about 2cm (1") wide.

Attach in the same way as you did for the vertical sashing.

Pin and then sew the quilt blocks to the sashing and batting strips.



Stitch on the quilt block side so you can make sure your stitching is a couple of mm's inside the border stitching on the block so it isn't seen on the front of the quilt.

Press the seams toward the sashing.



It is important to iron as you go.



Continue until all the rows are joined.



Press your quilt front .

Adding the borders

(We have added two borders. To do the same just do this process twice)

First of all trim the edges of the quilt so the edges are straight.



Decide how wide you would like the borders. (We made them about 9cm (3.5") wide)

Then measure one side of the quilt.

Cut two strips of border fabric this measurement x your width.

Cut two pieces of batting to match.



Put the border on top of the quilt wrong side up and then place the batting on top of that.



Pin and stitch a ½ inch seam making sure you stitch just inside the border already stitched on the blocks so the stitching will not be seen on the right side later.



Open the seam and iron the quilt flat.



Repeat for the opposite side of the quilt.

Now measure one of the sides without a border yet (including the new border width in your measurement)

Cut two strips of border fabric this length x your width.

Cut two pieces of batting to match.

Put the border on top of the quilt wrong side up and then place the batting on top of that.



Pin and stitch a 1/2 inch seam making sure you stitch just inside the border already stitched on the blocks so the stitching will not be seen on the right side later.



Open the seam towards the border and iron the seams flat.



Repeat for the opposite side of the quilt.

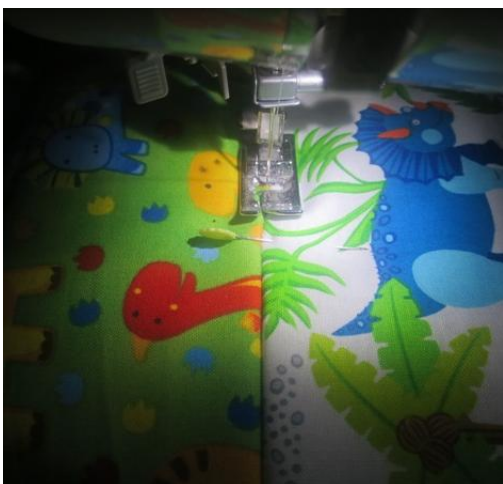
Adding the backing

Pin the quilt you have made and the backing wrong sides together and cut the backing just a little larger than the quilt. (This will allow for movement when quilting the quilt.)



Pin the backing to the quilt using safety pins spaced evenly all over the quilt (the whole quilt not just around the borders). They should be spaced about every 10cm (4").

To join the backing to the quilt, stitch along the straight seams where each block is joined. Try to stitch in the ditch made by the seam lines between blocks or along the borders or sashing



Stitch all the long lines first. Then go back and stitch the shorter lines in the ditch. Stitch all lines on opposite sides of the blocks in the same direction. For eg the top and bottom in the same direction/and the left and right side in the same direction.

When you are finished trim the borders so they are neat and even.



Making and adding the binding

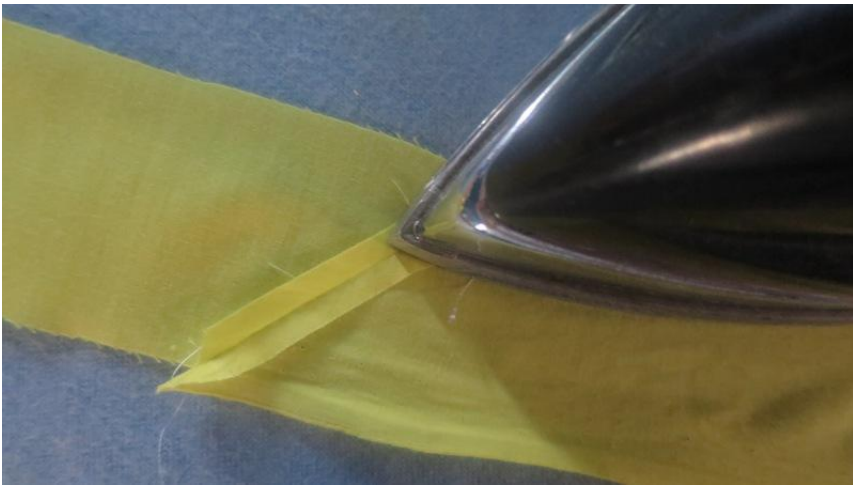
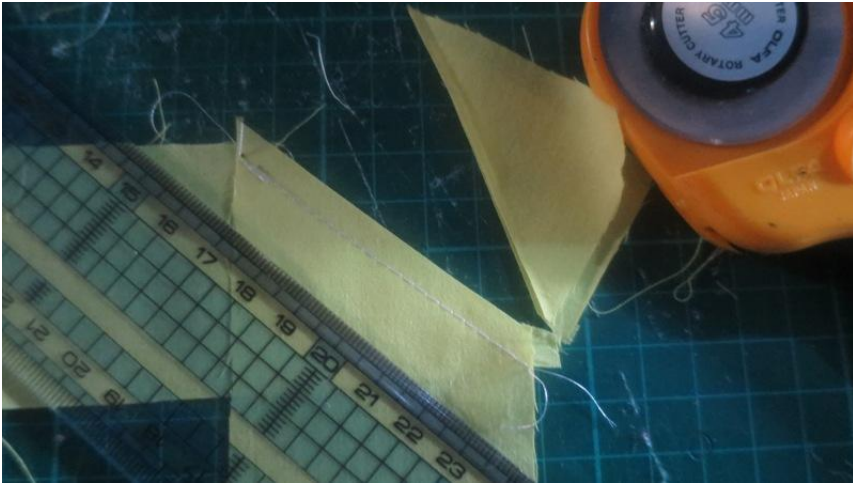
To make the binding, measure the length and width of the quilt and add them together and multiply by two.

Cut a long strip of fabric this length or cut a couple of strips and join them together (as explained below) with your sewing machine. Add extra length if you are joining strips. (About 10cm (4") per strip)

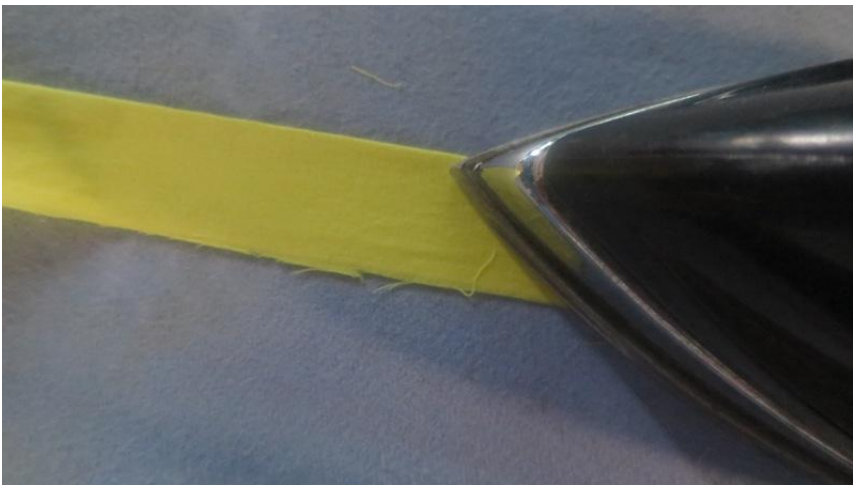
The width is optional but I usually find 6cm wide (2 1/2") wide sufficient.

To join the binding strips - Lay your fabric strips right sides together as shown, sew a diagonal seam from corner to corner, trim the corner, and repeat until all of the binding strips are sewn together into one long strip





Fold the binding in half wrong sides together and iron the fold.



You will be sewing the binding onto the quilt front first.

With your quilt right side up start about half way along one side.

Pin the binding to any side of the quilt, matching the raw edges and leaving about a 20cm (8") length unsewn at the beginning of the strip. Sew to the quilt using a ¼ inch seam.



Keep sewing until you reach the first corner, and stop stitching and do a bit of backstitch ¼" before the corner.

It is important to leave ¼" unsewn at the end!



Lift the binding strip up as shown forming a diagonal fold. Then pull the binding strip back down creating a fold at the top. Pin in place.



Then continue sewing the rest of the way around until you get back to where you started.



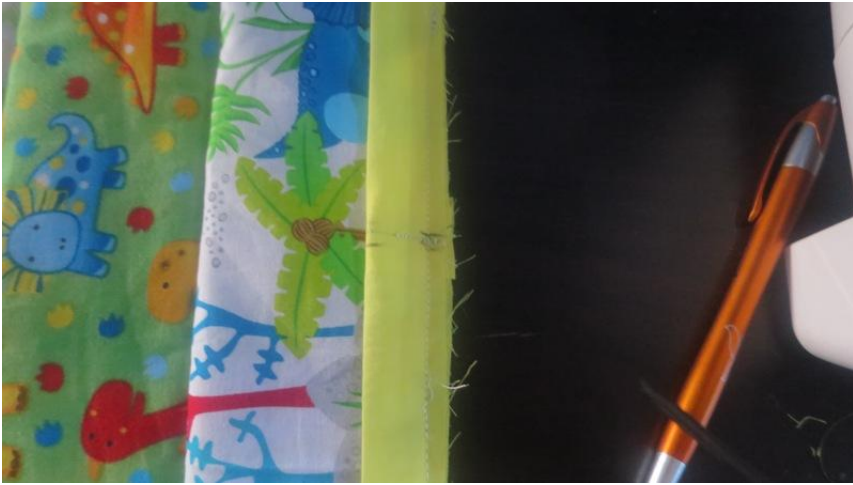
Stop sewing about 10cm (8") from where you started.



Trim the bindings so they meet in the middle of the unsewn space with about 2cm extra on each strip to spare.

Sew the seam.



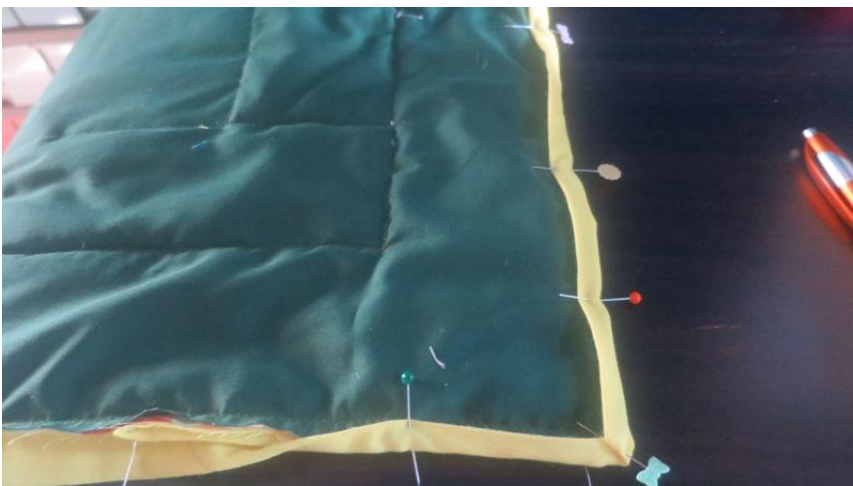


Then finish sewing the binding to the quilt.

Now turn the quilt over so you are working on the back of the quilt.

You can start anywhere but probably half way down one side would be a good spot.

Fold the binding strip right over around the back of the quilt until it's just PAST the 1/4" seam line that you made sewing the binding onto the front and pin.

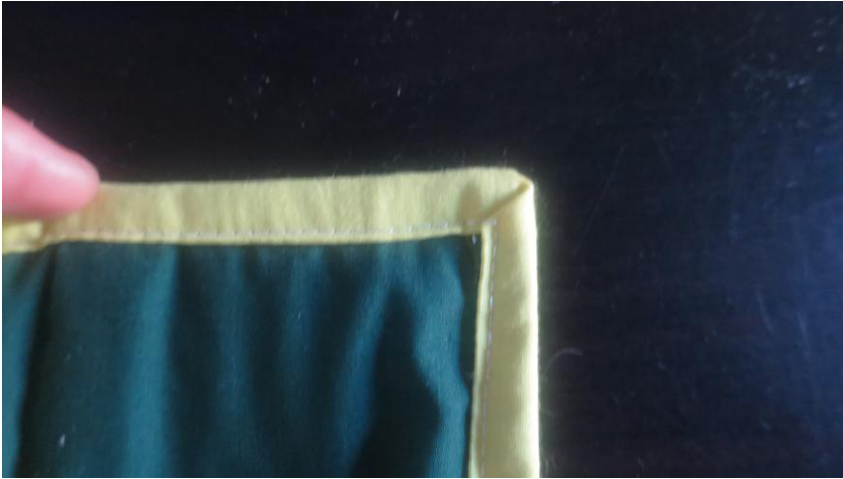


If you don't pull and stitch the binding edge past that seam line, you'll get stitches in your binding on the front.



Keep sewing until you reach the first corner. Stop about 12cm (5") before the corner.

Fold the binding in the corner creating a nice mitred corner and pin.



Continue stitching until you reach the point of the corner and then leave your needle down and lift the foot and turn the corner. Put your foot down and continue stitching in this fashion until you are right around the quilt.

You are now finished your quilt!



5x7

6x10 8x12

Hints

QUILTING

If your quilt is pinned all over properly there is no need to start the quilting in the centre of the quilt. It is best to stitch all the long lines first. Try to stitch these lines in the same direction.

If you are having problems when stitching the quilting with ugly 'bunching' forming, use a whole lot of pins lined up every 1cm (1/2") to flatten the 'bunching'. Then stitch over the pins very slowly to flatten the fabric.

My favourite needle to do the quilting is a Schmetz denim/jeans 80/12. It glides easily through all the fabric and batting so my stitches stay even.