

Meow Meow Quilt

4x4 5x5 6x6 7x7



Sweet Pea
MACHINE EMBROIDERY

Meow Meow Quilt 4x4 5x5 6x6 and 7x7 instructions

FABRIC REQUIREMENTS

4x4 (10cm x 10cm) Hoop

QUILTED BLOCK

Fabric A - 15cm x 15cm (6" x 6") background (top section)

Fabric B - 10cm x 18cm (4" x 7") background (bottom section)

CAT 1 - ORIENTAL SHORTHAIR

Fabric A - 15cm x 15cm (6" x 6") background (top section)

Fabric B - 10cm x 18cm (4" x 7") background (bottom section)

Fabric C - 10cm x 9cm (4" x 3.5") head/ body

Small piece of fabric for the applique: ears

CAT 2 - SIBERIAN

Fabric A - 15cm x 15cm (6" x 6") background (top section)

Fabric B - 10cm x 18cm (4" x 7") background (bottom section)

Fabric C - 10cm x 5cm (4" x 2") chest

Fabric D - 10cm x 6.5cm (4" x 2.5") top of head

Fabric E - 10cm x 8cm (4" x 3") snout

CAT 3 - DOMESTIC SHORT HAIR

Fabric A - 15cm x 15cm (6" x 6") background (top section)

Fabric B - 6.5cm x 12cm (2.5" x 4.5") background (bottom section)

Fabric C - 9cm x 12cm (3.5" x 4.5") main colour

Fabric D - 12cm x 8cm (4.5" x 3") patches

Small piece of fabric for the applique: right ear

CAT 4 - SIAMESE

Fabric A - 15cm x 15cm (6" x 6") background (top section)

Fabric B - 10cm x 18cm (4" x 7") background (bottom section)

Fabric C - 12cm x 10cm (4.5" x 4") main colour

Fabric D - 10cm x 10cm (4" x 4") face and ears

CAT 5 - TURKISH ANGORA

Fabric A - 15cm x 15cm (6" x 6") background (top section)

Fabric B - 10cm x 18cm (4" x 7") background (bottom section)

Fabric C - 9cm x 6.5cm (3.5" x 2.5") ears

Fabric D - 9cm x 10cm (3.5" x 4") body

CAT 6 - PERSIAN

Fabric A - 15cm x 15cm (6" x 6") background (top section)

Fabric B - 10cm x 18cm (4" x 7") background (bottom section)

Fabric C - 12cm x 8cm (4.5" x 3") head/face

Fabric D - 12cm x 6.5cm (4.5" x 2.5") body/neck

CAT 7 - SCOTTISH FOLD

Fabric A - 15cm x 15cm (6" x 6") background (top section)

Fabric B - 8cm x 9cm (3" x 3.5") background (bottom section)

Fabric C - 12cm x 12cm (4.5" x 4.5") body

CAT 8 - RAG DOLL

Fabric A - 15cm x 15cm (6" x 6") background (top section)

Fabric B - 10cm x 18cm (4" x 7") background (bottom section)

Fabric C - 12cm x 5cm (4.5" x 2") neck

Fabric D - 12cm x 9cm (4.5" x 3.5") head

Fabric E - 10cm x 9cm (4" x 3.5") face and ears

Fabric F - 6.5cm x 6.5cm (2.5" x 2.5") snout

CAT 9 - SPHYNX

Fabric A - 15cm x 15cm (6" x 6") background (top section)

Fabric B - 12cm x 12cm (4.5" x 4.5") background (bottom section)

Fabric C - 12cm x 12cm (4.5" x 4.5") body

CAT 10 - MAINE COON

Fabric A - 15cm x 15cm (6" x 6") background (top section)
Fabric B - 10cm x 18cm (4" x 7") background (bottom section)
Fabric C - 10cm x 5cm (4" x 2") neck
Fabric D - 10cm x 8cm (4" x 3") mane
Fabric E - 10cm x 8cm (4" x 3") head

CAT 11 - BRITISH SHORT HAIR

Fabric A - 15cm x 15cm (6" x 6") background (top section)
Fabric B - 10cm x 18cm (4" x 7") background (bottom section)
Fabric C - 12cm x 12cm (4.5" x 4.5") body

Batting 1 - 15cm x 15cm (6" x 6") cut one for each block

REST OF THE QUILT

OPTIONAL: Borders and border batting

Backing/Binding fabric – 43cm x 81cm (17" x 32") **measure your quilt front before cutting**

5x5 (13cm x 13cm) Hoop

QUILTED BLOCK

Fabric A - 18cm x 18cm (7" x 7") background (top section)
Fabric B - 12cm x 21cm (4.5" x 8.5") background (bottom section)

CAT 1 - ORIENTAL SHORTHAI

Fabric A - 18cm x 18cm (7" x 7") background (top section)
Fabric B - 12cm x 21.5cm (4.5" x 8.5") background (bottom section)
Fabric C - 13cm x 12cm (5" x 4.5") head/ body
Small piece of fabric for the applique: ears

CAT 2 - SIBERIAN

Fabric A - 18cm x 18cm (7" x 7") background (top section)
Fabric B - 12cm x 21.5cm (4.5" x 8.5") background (bottom section)
Fabric C – 13cm x 6.5cm (5" x 2.5") chest
Fabric D - 13cm x 8cm (5" x 3") top of head
Fabric E - 13cm x 10cm (5" x 4") snout

CAT 3 - DOMESTIC SHORT HAIR

Fabric A - 18cm x 18cm (7" x 7") background (top section)
Fabric B - 13cm x 15cm (5" x 6") background (bottom section)
Fabric C - 12cm x 14cm (4.5" x 5.5") main colour
Fabric D - 13cm x 10cm (5" x 4") patches
Small piece of fabric for the applique: right ear

CAT 4 - SIAMESE

Fabric A - 18cm x 18cm (7" x 7") background (top section)
Fabric B - 12cm x 21.5cm (4.5" x 8.5") background (bottom section)
Fabric C - 14cm x 13cm (5.5" x 5") main colour
Fabric D - 13cm x 12cm (5" x 4.5") face and ears

CAT 5 - TURKISH ANGORA

Fabric A - 18cm x 18cm (7" x 7") background (top section)
Fabric B - 12cm x 21.5cm (4.5" x 8.5") background (bottom section)
Fabric C - 10cm x 8cm (4" x 3") ears
Fabric D - 12cm x 12cm (4.5" x 4.5") body

CAT 6 - PERSIAN

Fabric A - 18cm x 18cm (7" x 7") background (top section)
Fabric B - 12cm x 21.5cm (4.5" x 8.5") background (bottom section)
Fabric C - 14cm x 6.5cm (5.5" x 3.5") head/face
Fabric D - 14cm x 8cm (5.5" x 3") body/neck

CAT 7 - SCOTTISH FOLD

Fabric A - 18cm x 18cm (7" x 7") background (top section)
Fabric B - 12cm x 13cm (4.5" x 5") background (bottom section)
Fabric C – 14cm x 14cm (5.5" x 5.5") body

CAT 8 - RAG DOLL

Fabric A - 18cm x 18cm (7" x 7") background (top section)
Fabric B - 12cm x 21.5cm (4.5" x 8.5") background (bottom section)
Fabric C - 14cm x 6.5cm (5.5" x 2.5") neck
Fabric D - 14cm x 12cm (5.5" x 4.5") head
Fabric E - 13cm x 12cm (5" x 4.5") face and ears
Fabric F - 8cm x 9cm (3" x 3.5") snout

CAT 9 - SPHYNX

Fabric A - 18cm x 18cm (7" x 7") background (top section)
Fabric B - 14cm x 17cm (5.5" x 6.5") background (bottom section)
Fabric C - 14cm x 14cm (5.5" x 5.5") body

CAT 10 - MAINE COON

Fabric A - 18cm x 18cm (7" x 7") background (top section)
Fabric B - 12cm x 21.5cm (4.5" x 8.5") background (bottom section)
Fabric C - 13cm x 6.5cm (5" x 2.5") neck
Fabric D - 14cm x 10cm (5.5" x 4") mane
Fabric E - 13cm x 9cm (5" x 3.5") head

CAT 11 - BRITISH SHORT HAIR

Fabric A - 18cm x 18cm (7" x 7") background (top section)
Fabric B - 12cm x 21.5cm (4.5" x 8.5") background (bottom section)
Fabric C - 14cm x 14cm (5.5" x 5.5") body

Batting 1 - 18cm x 18cm (7" x 7") cut one for each block

REST OF THE QUILT

OPTIONAL: Borders and border batting

Backing/Binding fabric – 51cm x 99cm (20" x 39") **measure your quilt front before cutting**

6x6 (16cm x 16cm) Hoop and 150mm x 150mm Hoop

QUILTED BLOCK

Fabric A - 20cm x 20cm (8" x 8") background (top section)
Fabric B - 17cm x 29cm (6.5" x 11.5") background (bottom section)

CAT 1 - ORIENTAL SHORTHAIR

Fabric A - 20cm x 20cm (8" x 8") background (top section)
Fabric B - 17cm x 29cm (6.5" x 11.5") background (bottom section)
Fabric C - 13cm x 14cm (5" x 5.5") head/ body
Small piece of fabric for the applique: ears

CAT 2 - SIBERIAN

Fabric A - 20cm x 20cm (8" x 8") background (top section)
Fabric B - 17cm x 29cm (6.5" x 11.5") background (bottom section)
Fabric C – 6.5cm x 13cm (2.5" x 5") chest
Fabric D - 14cm x 9cm (5.5" x 3.5") top of head
Fabric E - 15cm x 10cm (6" x 4") snout

CAT 3 - DOMESTIC SHORT HAIR

Fabric A - 20cm x 20cm (8" x 8") background (top section)
Fabric B - 13cm x 15cm (5" x 6") background (bottom section)
Fabric C - 13cm x 18cm (5" x 7") main colour
Fabric D - 10cm x 13cm (4" x 5") patches
Small piece of fabric for the applique: right ear

CAT 4 - SIAMESE

Fabric A - 20cm x 20cm (8" x 8") background (top section)
Fabric B - 17cm x 29cm (6.5" x 11.5") background (bottom section)
Fabric C - 15cm x 15cm (6" x 6") main colour
Fabric D - 13cm x 14cm (5" x 5.5") face and ears

CAT 5 - TURKISH ANGORA

Fabric A - 20cm x 20cm (8" x 8") background (top section)
Fabric B - 17cm x 29cm (6.5" x 11.5") background (bottom section)
Fabric C - 12cm x 8cm (4.5" x 3") ears
Fabric D - 14cm x 12cm (5.5" x 4.5") body

CAT 6 - PERSIAN

Fabric A - 20cm x 20cm (8" x 8") background (top section)
Fabric B - 17cm x 29cm (6.5" x 11.5") background (bottom section)
Fabric C - 15cm x 10cm (6" x 4") head/face
Fabric D - 15cm x 9cm (6" x 3.5") body/neck

CAT 7 - SCOTTISH FOLD

Fabric A - 20cm x 20cm (8" x 8") background (top section)
Fabric B - 13cm x 15cm (5" x 6") background (bottom section)
Fabric C - 18cm x 15cm (7" x 6") body

CAT 8 - RAG DOLL

Fabric A - 20cm x 20cm (8" x 8") background (top section)
Fabric B - 17cm x 29cm (6.5" x 11.5") background (bottom section)
Fabric C - 15cm x 8cm (6" x 3") neck
Fabric D - 15cm x 13cm (6" x 5") head
Fabric E - 14cm x 12cm (5.5" x 4.5") face and ears
Fabric F - 9cm x 9cm (3.5" x 3.5") snout

CAT 9 - SPHYNX

Fabric A - 20cm x 20cm (8" x 8") background (top section)
Fabric B - 13cm x 15cm (5" x 6") background (bottom section)
Fabric C - 18cm x 18cm (7" x 7") body

CAT 10 - MAINE COON

Fabric A - 20cm x 20cm (8" x 8") background (top section)
Fabric B - 17cm x 29cm (6.5" x 11.5") background (bottom section)
Fabric C - 15cm x 6.5cm (6" x 2.5") neck
Fabric D - 15cm x 10cm (6" x 4") mane
Fabric E - 14cm x 12cm (5.5" x 4.5") head

CAT 11 - BRITISH SHORT HAIR

Fabric A - 20cm x 20cm (8" x 8") background (top section)
Fabric B - 13cm x 15cm (5" x 6") background (bottom section)
Fabric C - 18cm x 18cm (7" x 7") body

Batting 1 - 20cm x 20cm (8" x 8") cut one for each block

REST OF THE QUILT

OPTIONAL: Borders and border batting

Backing/Binding fabric – 61cm x 122cm (24" x 48") **measure your quilt front before cutting**

7x7 (18cm x 18cm) Hoop

QUILTED BLOCK

Fabric A - 23cm x 23cm (9" x 9") background (top section)
Fabric B - 18cm x 30cm (7" x 12") background (bottom section)

CAT 1 - ORIENTAL SHORTHAIR

Fabric A - 23cm x 23cm (9" x 9") background (top section)
Fabric B - 18cm x 30cm (7" x 12") background (bottom section)
Fabric C - 18cm x 15cm (7" x 6") head/ body
Small piece of fabric for the applique: ears

CAT 2 - SIBERIAN

Fabric A - 23cm x 23cm (9" x 9") background (top section)
Fabric B - 18cm x 30cm (7" x 12") background (bottom section)
Fabric C - 17cm x 8cm (6.5" x 3") chest
Fabric D - 18cm x 10cm (7" x 4") top of head
Fabric E - 18cm x 14cm (7" x 5.5") snout

CAT 3 - DOMESTIC SHORT HAIR

Fabric A - 23cm x 23cm (9" x 9") background (top section)
Fabric B - 18cm x 21.5cm (7" x 8.5") background (bottom section)
Fabric C - 15cm x 23cm (6" x 9") main colour
Fabric D - 18cm x 13cm (7" x 5") patches
Small piece of fabric for the applique: right ear

CAT 4 - SIAMESE

Fabric A - 23cm x 23cm (9" x 9") background (top section)
Fabric B - 18cm x 30cm (7" x 12") background (bottom section)
Fabric C - 19cm x 18cm (7.5" x 7") main colour
Fabric D - 18cm x 17cm (7" x 6.5") face and ears

CAT 5 - TURKISH ANGORA

Fabric A - 23cm x 23cm (9" x 9") background (top section)
Fabric B - 18cm x 30cm (7" x 12") background (bottom section)
Fabric C - 13cm x 9cm (5" x 3.5") ears
Fabric D - 13cm x 17cm (5" x 6.5") body

CAT 6 - PERSIAN

Fabric A - 23cm x 23cm (9" x 9") background (top section)
Fabric B - 18cm x 30cm (7" x 12") background (bottom section)
Fabric C - 19cm x 13cm (7.5" x 5") head/face
Fabric D - 20cm x 10cm (8" x 4") body/neck

CAT 7 - SCOTTISH FOLD

Fabric A - 23cm x 23cm (9" x 9") background (top section)
Fabric B - 14cm x 17cm (5.5" x 6.5") background (bottom section)
Fabric C - 20cm x 19cm (8" x 7.5") body

CAT 8 - RAG DOLL

Fabric A - 23cm x 23cm (9" x 9") background (top section)
Fabric B - 18cm x 30cm (7" x 12") background (bottom section)
Fabric C - 18cm x 8cm (7" x 3") neck
Fabric D - 18cm x 17cm (7" x 6.5") head
Fabric E - 17cm x 14cm (6.5" x 5.5") face and ears
Fabric F - 10cm x 10cm (4" x 4") snout

CAT 9 - SPHYNX

Fabric A - 23cm x 23cm (9" x 9") background (top section)
Fabric B - 19cm x 20cm (7.5" x 8") background (bottom section)
Fabric C - 20cm x 19cm (8" x 7.5") body

CAT 10 - MAINE COON

Fabric A - 23cm x 23cm (9" x 9") background (top section)
Fabric B - 18cm x 30cm (7" x 12") background (bottom section)
Fabric C - 17cm x 8cm (6.5" x 3") neck
Fabric D - 19cm x 12cm (7.5" x 4.5") mane
Fabric E - 15cm x 12cm (6" x 4.5") head

CAT 11 - BRITISH SHORT HAIR

Fabric A - 23cm x 23cm (9" x 9") background (top section)
Fabric B - 18cm x 30cm (7" x 12") background (bottom section)
Fabric C - 20cm x 19cm (8" x 7.5") body

Batting 1 - 23cm x 23cm (9" x 9") cut one for each block

REST OF THE QUILT

OPTIONAL: Borders and border batting

Backing/Binding fabric - 66cm x 137cm (26" x 54") **measure your quilt front before cutting**

Finished Dimensions of quilt using 21 blocks (approx.):

4x4 – 72cmW x 32cmL (28 ½" x 12 ½")

5x5 – 90cmW x 39cmL (35 ½" x 15 ½")

6x6 – 108cmW x 47cmL (42 ½" x 18 ½")

7x7 – 126cmW x 55cmL (49 ½" x 21 ½")

Sweet Pea Machine Embroidery Designs Design Files Disclaimer-

Please note to customers who use embroidery software to open our files. In doing so, you may run the risk of the design not stitching as intended by our digitiser's instructions.

We highly recommend that any design file purchased from us should be downloaded as per our "how to download our designs" instructions on our website and placed directly onto a USB/memory card and then placed directly onto the embroidery machine.

We will not be obligated to provide compensation to customers who have put our files through their software and the resulting stitch out was not as intended.

INSTRUCTIONS - USING YOUR EMBROIDERY MACHINE:

For tips on how to correctly hoop your stabiliser, go to <https://swpea.com/blogs/machine-embroidery-blogs/tips-for-stabiliser-in-the-hoop>

MAKE QUILTED BLOCK

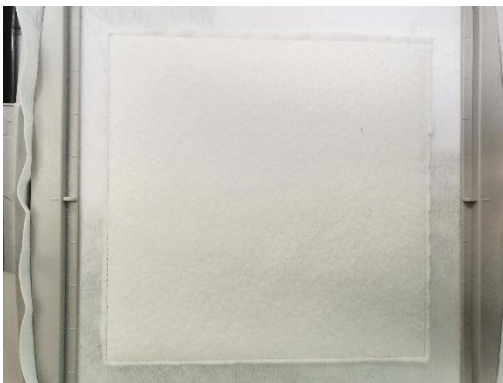
Hoop up **cutaway stabiliser** in the hoop. Load design onto your machine. Use applique scissors for trimming the batting and fabric.



STEP 1 Place **Batting 1** on top of the hoop. Stitch the batting down.



Remove the hoop from your machine and trim the batting about 1-2mm from the stitching.



STEP 2 Stitch the placement line for **fabric A**.



STEP 3 Place **Fabric A** on top of the hoop right side up and stitch down. Remove the hoop from your machine and trim the fabric about 1-2mm from the stitching, leaving the excess fabric in the seams.



STEP 4 Stitch the placement line for the bottom background.



STEP 5 Place **Fabric B** wrong side up on top of the hoop with about a ½" crossing over the placement line and the excess pointing towards the top left hand corner of the hoop. Stitch down.



STEP 6 Fold over, hold taut and stitch down.



Remove your work from the hoop. Trim the seam to about ½ an inch. Hold aside.



MAKE CAT 1 – ORIENTAL SHORTHAIR

Hoop up **cutaway stabiliser** in the hoop. Load design onto your machine. Use applique scissors for trimming the batting and fabric.



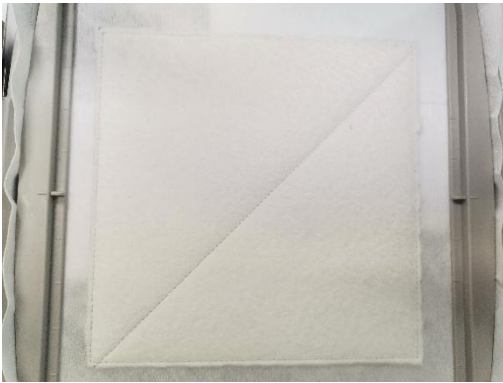
STEP 1 Place **Batting 1** on top of the hoop. Stitch the batting down.



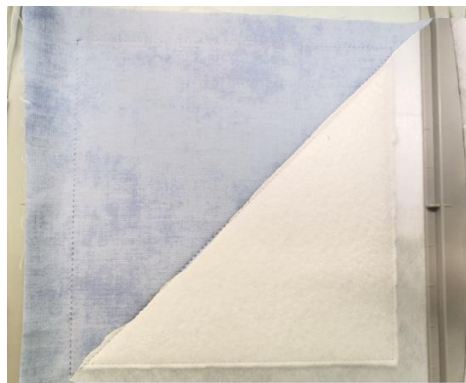
Remove the hoop from your machine and trim the batting about 1-2mm from the stitching.



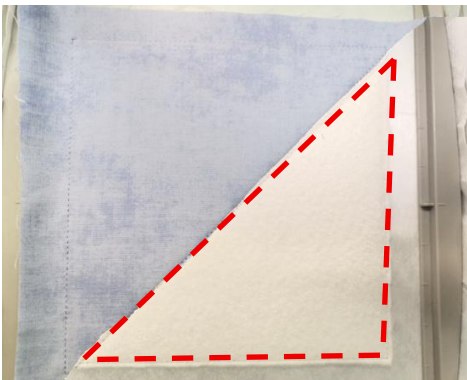
STEP 2 Stitch the placement line for **fabric A**.



STEP 3 Place **Fabric A** on top of the hoop right side up and stitch down. Remove the hoop from your machine and trim the fabric about 1-2mm from the stitching, leaving the excess fabric in the seams.



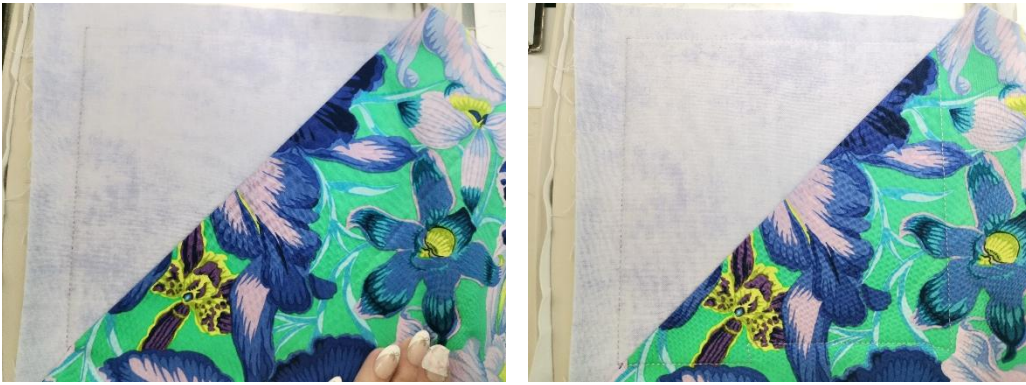
STEP 4 Stitch the placement line for the bottom background.



STEP 5 Place **Fabric B** wrong side up on top of the hoop with about a ½" crossing over the placement line and the excess pointing towards the top left hand corner of the hoop. Stitch down.



STEP 6 Fold over, hold taut and stitch down.



Remove the hoop from your machine and trim the fabric about 1-2mm from the stitching. Leaving the excess fabric in the seam.



STEP 7 Embroider the stippling.



AFTER COMPLETING STEPS 1-7 CONTINUE ON TO THE FOLLOWING FOR EACH INDIVIDUAL CAT BLOCK
CAT 1

STEP 8 Stitch the placement line for the cat's ears



STEP 9 Cut a piece of fabric large enough to cover the placement lines and place it right side up on top of the placement lines. Stitch down.



Remove the hoop from your machine and trim the fabric about 1-2mm from the stitching.



STEP 10 Embroider the satin stitch around the ears.



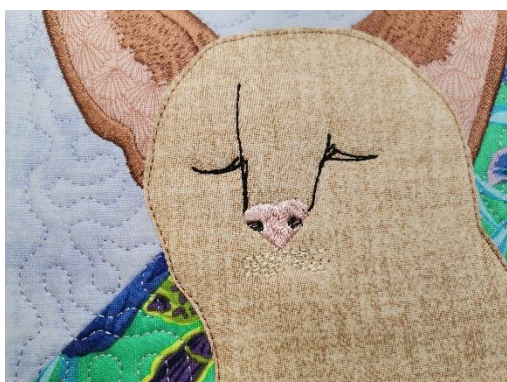
STEPS 11 & 12 Repeat the applique process with the head using **Fabric C**. Trim, leaving the excess fabric in the seams.



STEP 13 Embroider the detail around the nose.



STEP 14 & 15 Embroider the detail around the front of the snout. Then embroider the nose



STEPS 16 - 20 Embroider the eyes: background of the eyes, irises, pupils and around the eye, eye shines and then the top of the eyes.



STEP 21 Embroider the snout and chin.



STEP 22 Embroider the mouth.



STEP 23 Embroider the satin stitch around the head.



STEP 24 Embroider the whiskers.

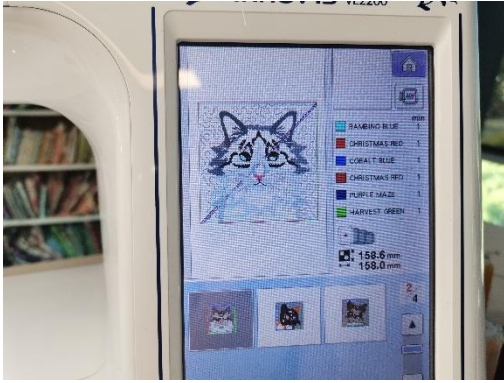


Remove your work from the hoop. Trim the seam to about ½ an inch. Hold aside.



MAKE CAT 2 – SIBERIAN

Hoop up **cutaway stabiliser** in the hoop. Load design onto your machine. Use applique scissors for trimming the batting and fabric.



REPEAT THE STEPS 1-7 FROM CAT 1.

STEPS 8 & 9 Repeat the applique process with the chest using **Fabric C**. Trim, leaving the excess fabric in the seams.



STEPS 10 & 11 Repeat the applique process with the head using **Fabric D**. Trim.



STEPS 12 & 13 Repeat the applique process with the snout using **Fabric E**. Trim.



STEPS 14 & 15 Embroider the satin stitch along the sides of the chest. Then embroider the satin stitch along the head.



STEP 16 Embroider the stitch along the bottom of the snout.



STEP 17 Embroider the satin stitch around the snout and along the bottom of the eyes.



STEP 18 Embroider the detail around the top of the nose.



STEP 19 Embroider the nose.



STEP 20 Embroider the mouth.



STEPS 21 - 25 Embroider the eyes: background of the eyes, irises, pupils and around the eye, eye shines and then the top of the eyes.



STEP 26 Embroider the ears.



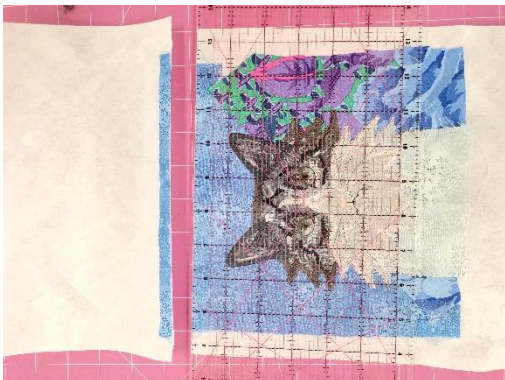
STEP 27 Embroider the markings.



STEP 28 Embroider the whiskers.

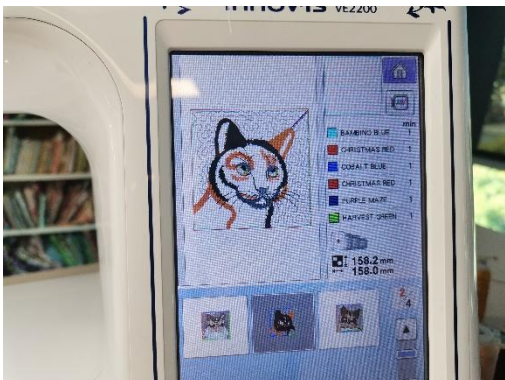


Remove your work from the hoop. Trim the seam to about ½ an inch. Hold aside



MAKE CAT 3 – DOMESTIC SHORT HAIR

Hoop up **cutaway stabiliser** in the hoop. Load design onto your machine. Use applique scissors for trimming the batting and fabric.



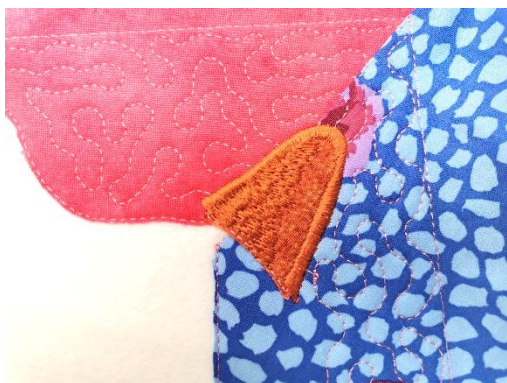
REPEAT THE STEPS 1-7 FROM CAT 1.

© 2026 Sweet Pea. All designs remain the property of Sweet Pea Machine Embroidery. They may not be copied or reproduced in any way. The design files may not be sold or shared.

STEPS 8 & 9 Repeat the applique process with the right ear using piece of fabric to cover the placement line. Trim.



STEP 10 Embroider the satin stitch around the ear.



STEPS 11 & 12 Repeat the applique process with the main colour using **Fabric C** . Trim, leaving the excess fabric in the seams.



STEPS 13 & 14 Repeat the applique process with the patches using **Fabric D** . Trim, leaving the excess fabric in the seams.



STEP 15 Embroider the satin stitch around the patches.



STEP 16 Embroider the details along the face .



STEP 17 Embroider the detail along the front of the snout.



STEPS 18 - 22 Embroider the eyes: background of the eyes, irises, pupils and around the eye, eye shines and then the top of the eyes.



STEP 23 Embroider the satin stitch around the main body of the cat.



STEP 24 Embroider the detail around the top of the snout.



STEP 25 Embroider the detail around the mouth.



STEPS 26 & 27 Embroider the shadow of the the nose and then embroider the nose.



STEP 28 Embroider the whiskers.

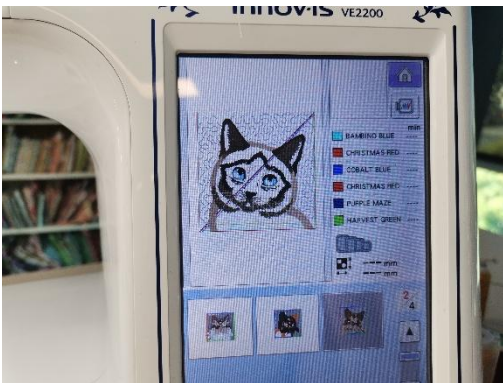


Remove your work from the hoop. Trim the seam to about ½ an inch. Hold aside.



MAKE CAT 4 – SIAMESE

Hoop up **cutaway stabiliser** in the hoop. Load design onto your machine. Use applique scissors for trimming the batting and fabric.



REPEAT THE STEPS 1- 7 FROM CAT 1.

STEPS 8 & 9 Repeat the applique process with the body using **Fabric C**. Trim, leaving the excess fabric in the seams.



STEPS 10 & 11 Repeat the applique process with the face and ears using **Fabric D**. Trim,



STEP 12 Embroider along the bottom sides of the face.



STEP 13 Embroider the satin stitch around top of the head and body.



STEPS 14 & 15 Embroider along the ears and along the face. Then embroider the satin stitch along the sides of the face.



STEP 16 Embroider the detail in the ears and detail below the eyes.



STEP 17 Embroider the snout and detail below the face.



STEPS 18 & 19 Embroider the shadow of the the nose and then embroider the nose.



STEPS 20 - 24 Embroider the eyes: background of the eyes, irises, pupils and around the eye, eye shines and then the top of the eyes.



STEP 25 Embroider the detail around the top of the snout.



STEP 26 Embroider the whiskers.

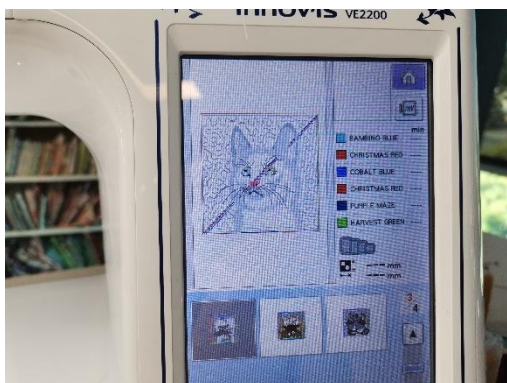


Remove your work from the hoop. Trim the seam to about ½ an inch. Hold aside.



MAKE CAT 5 – TURKISH ANGORA

Hoop up **cutaway stabiliser** in the hoop. Load design onto your machine. Use applique scissors for trimming the batting and fabric.



REPEAT THE STEPS 1-7 FROM CAT 1.

STEPS 8 & 9 Repeat the applique process with the ears using **Fabric C**. Trim



STEPS 10 & 11 Repeat the applique process with the body using **Fabric D**. Trim, leaving the excess fabric in the seams.



STEPS 12 & 13 Embroider the satin stitch around the ears and then the details.



STEP 14 Embroider the detail around the top of the snout.



STEPS 15 & 16 Embroider the shadow of the the nose and then embroider the nose.



STEPS 17 & 18 Embroider the right eye and then the detail.



STEPS 19 & 20 Embroider the left eye and then the detail.



STEPS 21 - 23 Embroider the pupils and around the eye, eye shines and then the top of the eyes.



STEP 24 Embroider the snout and satin stitch around the body.



STEP 25 Embroider the mouth.



STEP 26 Embroider the whiskers.

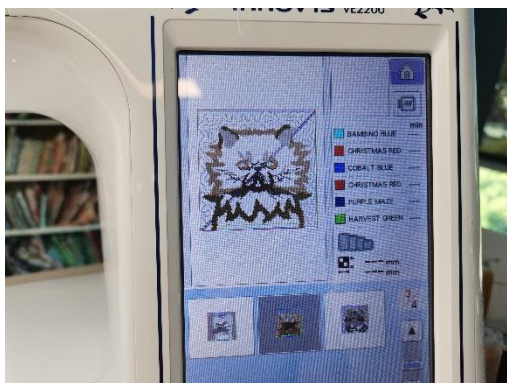


Remove your work from the hoop. Trim the seam to about ½ an inch. Hold aside.



MAKE CAT 6 - PERSIAN

Hoop up **cutaway stabiliser** in the hoop. Load design onto your machine. Use applique scissors for trimming the batting and fabric.



REPEAT THE STEPS 1-7 FROM CAT 1.

STEPS 8 & 9 Repeat the applique process with the body/ using **Fabric D** . Trim, leaving the excess fabric in the seams.



STEPS 10 & 11 Repeat the applique process with the head/face using **Fabric C** . Trim.



STEP 12 Embroider the satin stitch around the neck.



STEP 13 Embroider the satin stitch around the head.



STEP 14 Embroider the detail around the top of the snout.



STEP 15 Embroider the nose.



STEPS 16 – 20 Embroider the eyes: background of the eyes, irises, pupils and around the eye, eye shines and then the top of the eyes.



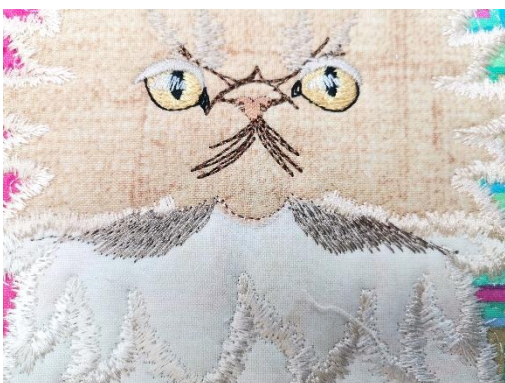
STEP 21 Embroider the along the ears.



STEP 22 Embroider the detail above the eyes and ears.



STEP 23 Embroider along the sides of the snout.



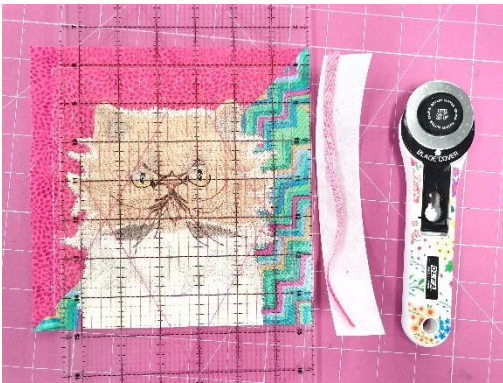
STEP 24 Embroider the detail along the snout and the mouth.



STEP 25 Embroider the mouth and then the whiskers.

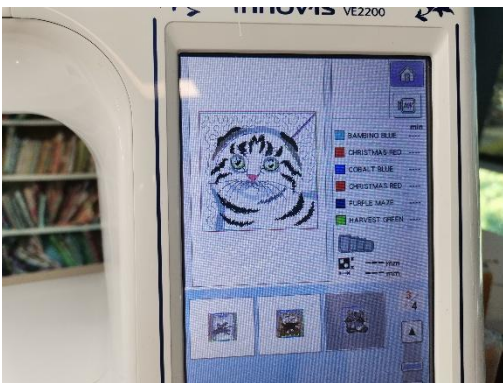


Remove your work from the hoop. Trim the seam to about ½ an inch. Hold aside.



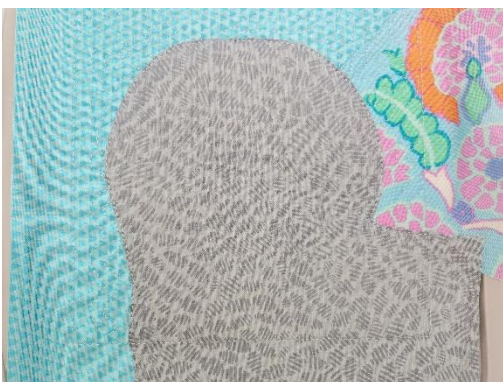
MAKE CAT 7 - SCOTTISH FOLD

Hoop up **cutaway stabiliser** in the hoop. Load design onto your machine. Use applique scissors for trimming the batting and fabric.



REPEAT THE STEPS 1-7 FROM CAT 1.

STEPS 8 & 9 Repeat the applique process with the body using **Fabric C**. Trim, leaving the excess fabric in the seams.



STEP 10 Embroider the satin stitch along the sides of the body.



STEP 11 Embroider the detail on the front of the snout and below the eyes.



STEP 12 Embroider the snout.



STEPS 13 – 17 Embroider the eyes: background of the eyes, irises, pupils and around the eye, eye shines and then the top of the eyes.



STEP 18 Embroider the detail around the top of the snout.



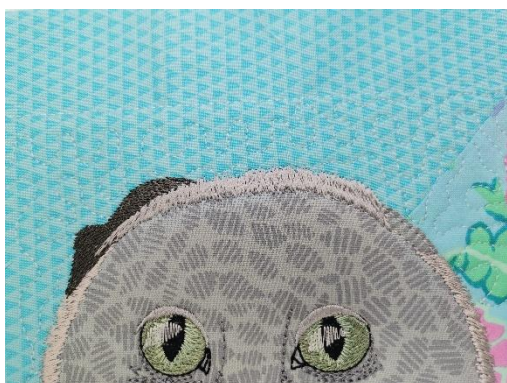
STEP 19 Embroider the satin stitch along the sides of the face.



STEP 20 Embroider the left ear.



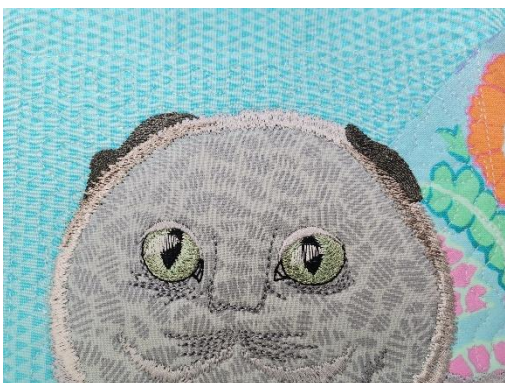
STEP 21 Embroider along the top of the head.



STEP 22 Embroider the right ear.



STEP 23 Embroider along the bottom of the ears.



STEPS 24 & 25 Embroider the shadow of the the nose and then embroider the nose.



STEP 26 Embroider the mouth.



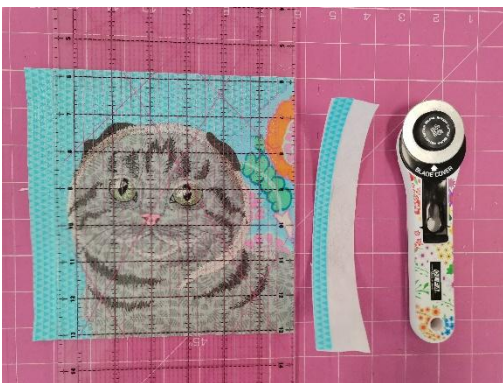
STEP 27 Embroider the markings.



STEP 28 Embroider the whiskers.

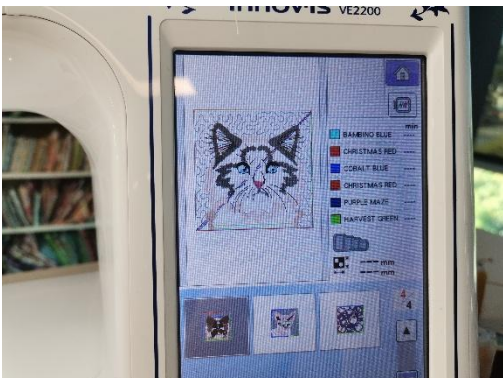


Remove your work from the hoop. Trim the seam to about ½ an inch. Hold aside.



MAKE CAT 8 - RAG DOLL

Hoop up **cutaway stabiliser** in the hoop. Load design onto your machine. Use applique scissors for trimming the batting and fabric.



REPEAT THE STEPS 1-7 FROM CAT 1.

STEPS 8 & 9 Repeat the applique process with the neck using **Fabric C**. Trim, leaving the excess fabric in the seams.



STEPS 10 & 11 Repeat the applique process with the head using **Fabric D**. Trim.



STEPS 12 & 13 Embroider the satin stitch around the neck and then the head.



STEPS 14 & 15 Repeat the applique process with the face and ears using **Fabric E**. Trim.



STEP 16 Embroider the satin stitch around the ears and face.



STEP 17 Embroider the detail in the ears.



STEPS 18 & 19 Repeat the applique process with the snout using **Fabric F**. Trim.



STEP 20 Embroider the detail on the front of the snout and the satin stitch round the snout.



STEPS 21 – 25 Embroider the eyes: background of the eyes, irises, pupils and around the eye, eye shines and then the top of the eyes.



STEP 26 & 27 Embroider the detail around the top of the snout. Then embroider the shadow of the nose



STEP 28 Embroider the nose.



STEP 29 Embroider the mouth.



STEP 30 Embroider the whiskers.

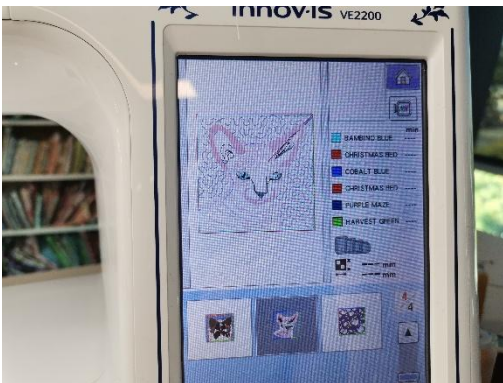


Remove your work from the hoop. Trim the seam to about ½ an inch. Hold aside.



MAKE CAT 9 - SPHYNX

Hoop up **cutaway stabiliser** in the hoop. Load design onto your machine. Use applique scissors for trimming the batting and fabric.



REPEAT THE STEPS 1-7 FROM CAT 1.

STEPS 8 & 9 Repeat the applique process with the body using **Fabric C**. Trim, leaving the excess fabric in the seams.



STEP 10 Embroider the wrinkle detail on the skin.



STEP 11 Embroider the satin stitch around the body and head.



STEP 12 Embroider the detail above the nose and inside the ears.



STEP 13 Embroider around the ears and the snout.



STEPS 14 – 18 Embroider the eyes: background of the eyes, irises, pupils and around the eye, eye shines and then the top of the eyes.



STEPS 19 & 20 Embroider the shadow of the the nose and then embroider the nose.

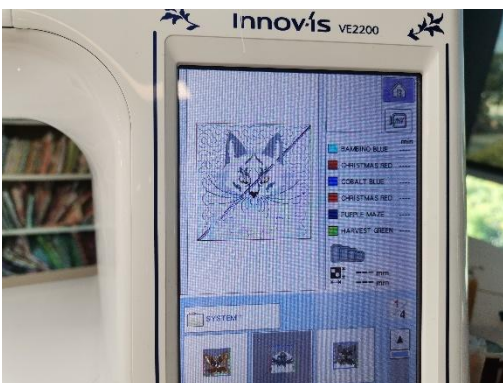


Remove your work from the hoop. Trim the seam to about ½ an inch. Hold aside.



MAKE CAT 10 – MAINE COON

Hoop up **cutaway stabiliser** in the hoop. Load design onto your machine. Use applique scissors for trimming the batting and fabric.



REPEAT THE STEPS 1-7 FROM CAT 1.

STEPS 8 & 9 Repeat the applique process with the neck using **Fabric C**. Trim, leaving the excess fabric in the seams.



STEPS 10 & 11 Repeat the applique process with the mane using **Fabric D**. Trim, leaving the excess fabric in the seams.



STEPS 12 & 13 Repeat the applique process with the head using **Fabric E**. Trim.



STEP 14 Embroider the satin stitch around the neck.



STEP 15 Embroider the detail and satin stitch around the mane.



STEP 16 Embroider the satin stitch around the head.



STEP 17 Embroider the ears and detail.



STEP 18 Embroider the detail at front of the snout, under the eyes and along the base of ears.



STEPS 19 – 23 Embroider the eyes: background of the eyes, irises, pupils and around the eye, eye shines and then the top of the eyes.



STEP 24 Embroider the snout.



STEP 25 Embroider the detail around the top of the snout.



STEPS 26 & 27 Embroider the shadow of the the nose and then embroider the nose.



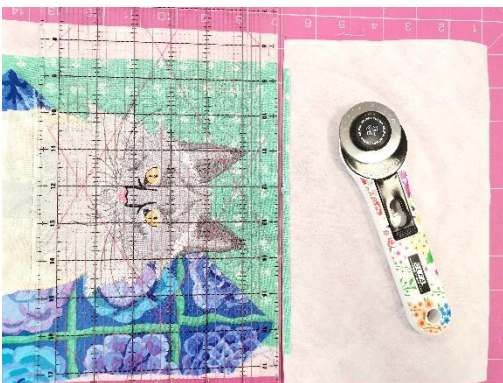
STEP 28 Embroider the markings on the face.



STEP 29 Embroider the whiskers.



Remove your work from the hoop. Trim the seam to about ½ an inch. Hold aside.



MAKE CAT 11 – BRITISH SHORTHAIR

Hoop up **cutaway stabiliser** in the hoop. Load design onto your machine. Use applique scissors for trimming the batting and fabric.



REPEAT THE STEPS 1-7 FROM CAT 1.

STEPS 8 & 9 Repeat the applique process with the body using **Fabric C**. Trim, leaving the excess fabric in the seams.



STEP 10 Embroider the detail along the front of the snout and under the eyes.



STEPS 11 – 15 Embroider the eyes: background of the eyes, irises, pupils and around the eye, eye shines and then the top of the eyes.



STEP 16 Embroider the satin stitch around the body and head.



STEP 17 Embroider around the ears.



STEP 18 Embroider the snout and detail in the ears.



STEP 19 Embroider the sides of the face.



STEP 20 Embroider the detail around the top of the snout.



STEPS 21 - 23 Embroider the shadow of the the nose and then embroider the nose. Then embroider the mouth.



STEP 24 Embroider the whiskers.



Remove your work from the hoop. Trim the seam to about ½ an inch. Hold aside.



ASSEMBLY
USING YOUR REGULAR SEWING MACHINE:
JOINING THE BLOCKS

Lay out your blocks on a flat surface and decide on your layout.



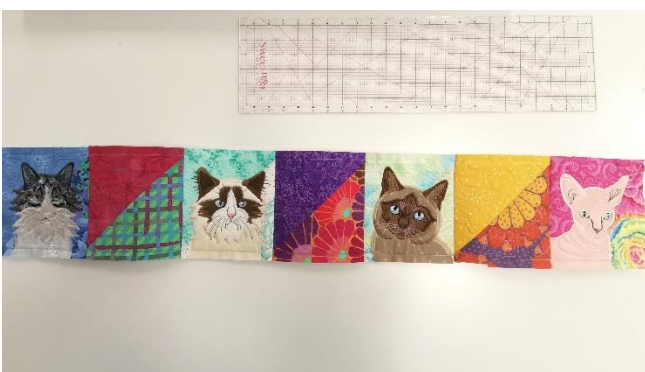
Start by joining the blocks in rows. Place the first two blocks **right sides** together.



Pin and stitch the side seam on your sewing machine. Stitch just inside the outer border line that is already stitched on the blocks, so the stitching will not be seen on the right side later.



Continue this until you have joined the remaining blocks in that row together.



Continue this until you have each horizontal row of blocks joined.



Open out the stitched seams and iron flat.



Next, join the horizontal rows to each other by placing the first two rows right sides together. Pin and stitch the seams on your sewing machine. Stitch just inside the border is already stitched on the blocks, so the stitching will not be seen on the right side later.



Open out the stitched seams and iron flat.



Continue this until you have joined all the horizontal rows together. If needed, trim the edges to make them even.



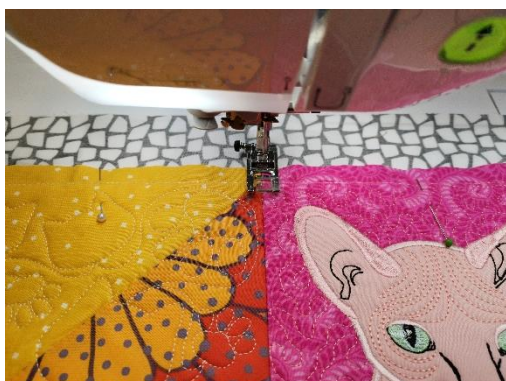
THE BACK AND BINDING OF THE RUNNER/QUILT

Place **Backing/Binding fabric** on your table, the wrong side facing up. Then place your sewn quilt right side up, on top of the **Backing/Binding fabric**. Pin them together. **Optional – You can spray them together with temporary adhesive.**



To keep the quilt's layers together, we can **“stitch in the ditch.”** This process will help keep the seams flat during the laundering process and will keep it flat during its lifetime.

NOTE: Stitching in the ditch gives an invisible finish on the front, and the stitching lines are only visible on the reverse of the quilt. **Ensure the bobbin thread on the underside of the quilt matches the fabric and the top thread on the top of the quilt is invisible thread.** Decide which seams need ditch stitching on the quilt. Not every seam needs to be stitched; choosing the main seams to hold the central blocks flat is acceptable.



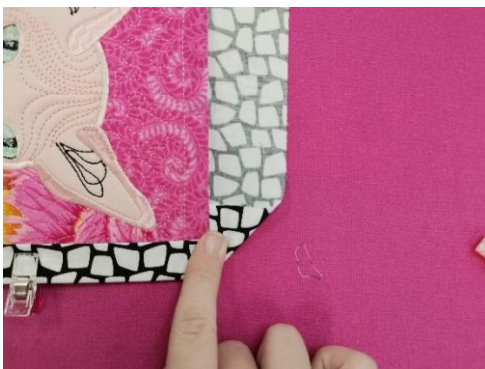
Trim the excess backing so it is precisely 1¼" (3cm) bigger than the quilt. **THIS EXTRA FABRIC WILL BE USED AS THE BINDING.**



Starting on any side, fold the backing fabric in half and then fold it in half again, ensuring you fold it just over your seam stitching and then pin (we started pinning in the middle). Continue pinning your binding until you reach your first corner.



Try to make a nice, mitred corner when you get to the corner. Turn your binding in at the corner and continue folding the same way as we did for the first side of the binding. You can iron your folds as you go if this helps with your mitred corners. Fold a final time and pin the corner in place.

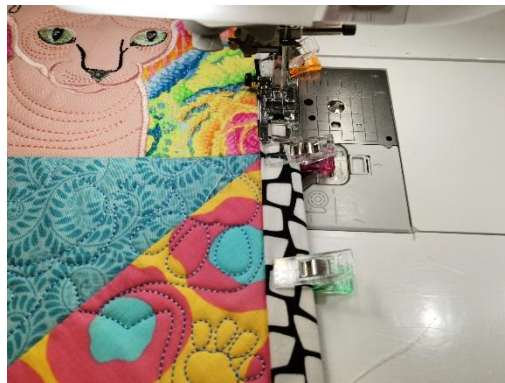


Continue pinning right around the quilt.



Starting anywhere, sew the binding to the quilt just inside the folded edge of the binding. We suggest you change your bobbin thread to match your backing.

When you reach the corner, leave your needle down, lift the foot, and rotate the quilt. Put the foot down and continue stitching until you are right around the quilt.



Press. Enjoy your quilt!

