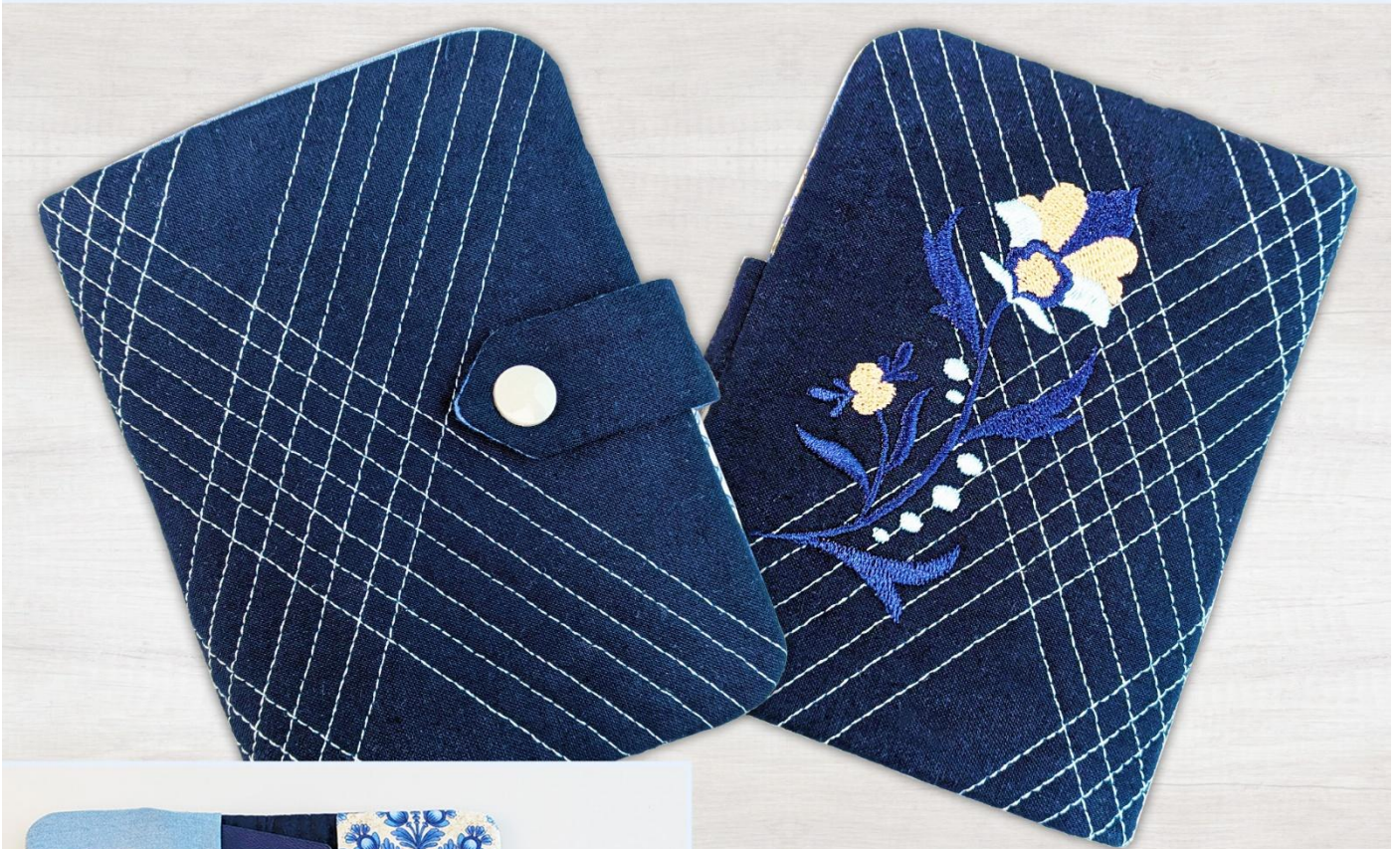


# Travel Buddy

## Passport Cover



6x10

Sweet Pea  
MACHINE EMBROIDERY

## Travel Buddy Passport Cover 6x10 Instructions

### FABRIC REQUIREMENTS

#### **6x10 (16cm x 26cm) Hoop**

#### **BANK CARD POCKET AND FLAP**

**Fabric A** – 13cm x 53cm (4.5" x 22") bank card pockets

**Fabric B** – 13cm x 15cm (4.5" x 6") back of pocket

**Fabric C** – 6.5cm x 12cm (2.5" x 4.5") front of flap

**Fabric D** – 6.5cm x 12cm (2.5" x 4.5") back of flap

#### **OUTSIDE PANEL**

**Fabric A** – 19cm x 28cm (7.5" x 11") front of passport cover

**Batting 1** – 19cm x 28cm (7.5"x 11")

#### **INSIDE PANEL**

**Fabric A** – 19cm x 28cm (7.5" x 11") inside background

**Fabric B** – 18cm x 20cm (7" x 8") passport pocket

**Fabric C** – 18cm x 23cm (7" x 9") pocket behind bank card pocket

**1x Kam snap or clasp**

#### **Final Dimensions (approx.) Holds 3 standard bank cards:**

**6x10** – 21cmW x 14cmL (8.5" x 5.5") open

– 13cmW x 14cmL (4.5" x 5.5") closed

**NOTE:** If you have decided to make this project with Leather, Faux Leather, Vinyl, Cork, PVC (clear plastic) or any combination of these, please refer to our guide with extra tips on how use these materials here - <https://swpea.com.au/blogs/machine-embroidery-blogs/tips-when-using-pu-leather-in-machine-embroidery>

#### **Sweet Pea Machine Embroidery Designs Design Files Disclaimer-**

Please note to customers who use embroidery software to open our files. In doing so, you may run the risk of the design not stitching as intended by our digitiser's instructions.

We highly recommend that any design file purchased from us should be downloaded as per our "how to download our designs" instructions on our website and placed directly onto a USB/memory card and then placed directly onto the embroidery machine.

We will not be obligated to provide compensation to customers who have put our files through their software and the resulting stitch out was not as intended.

## INSTRUCTIONS

### USING YOUR EMBROIDERY MACHINE:

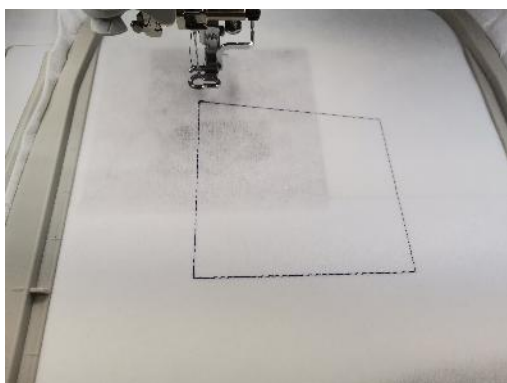
For tips on how to correctly hoop your stabiliser, go to <https://swpea.com/blogs/machine-embroidery-blogs/tips-for-stabiliser-in-the-hoop>

### MAKE THE BANK CARD POCKETS AND FLAP FIRST

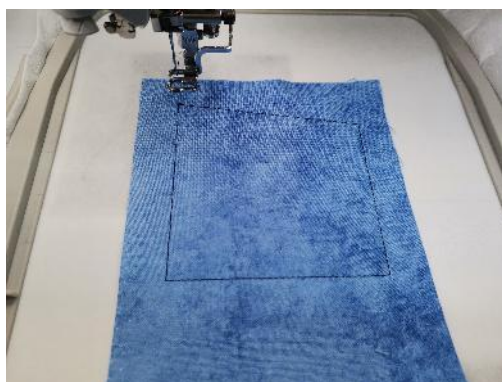
Hoop up **cutaway stabiliser**. Load design onto your machine. Use applique scissors for trimming the fabric.



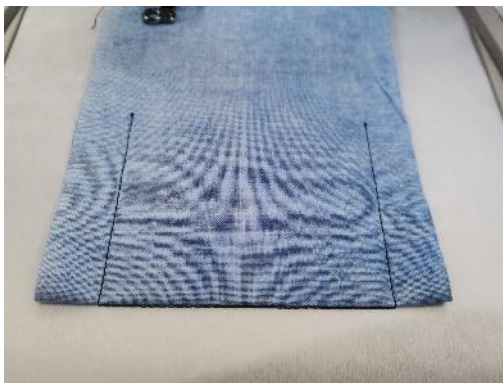
**STEP 1** Stitch the placement line for the bank card pockets.



**STEP 2** Place **Fabric A** on top of the hoop right side up with the strip of fabric covering the placement line. The excess fabric should be sitting towards the bottom of the hoop. Stitch down.



**STEP 3** Fold up the excess fabric of the strip hanging off the bottom to the top of the hoop. The right sides will be together. Pull the fabric taut against the stitching. Stitch down.



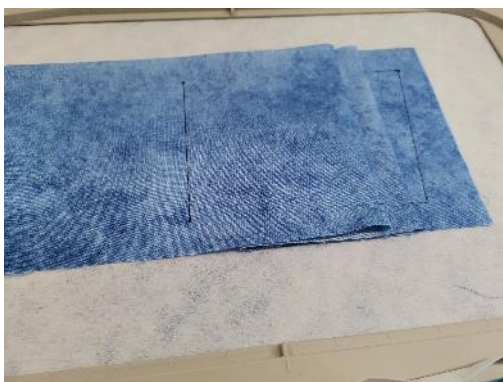
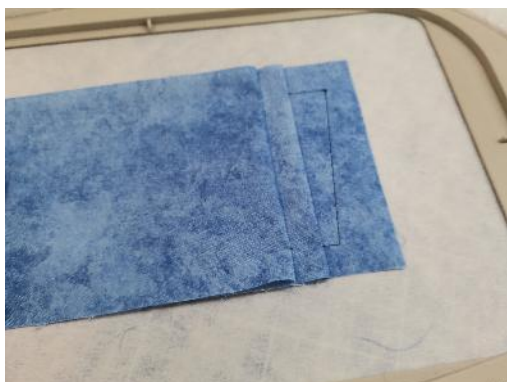
**STEP 4** Fold the strip back down towards the centre of the hoop (wrong sides together). Stitch down the fabric across the bottom.



**STEP 5** Fold the strip up so the right sides are together. Pull the fabric taut against the stitching. Stitch down.



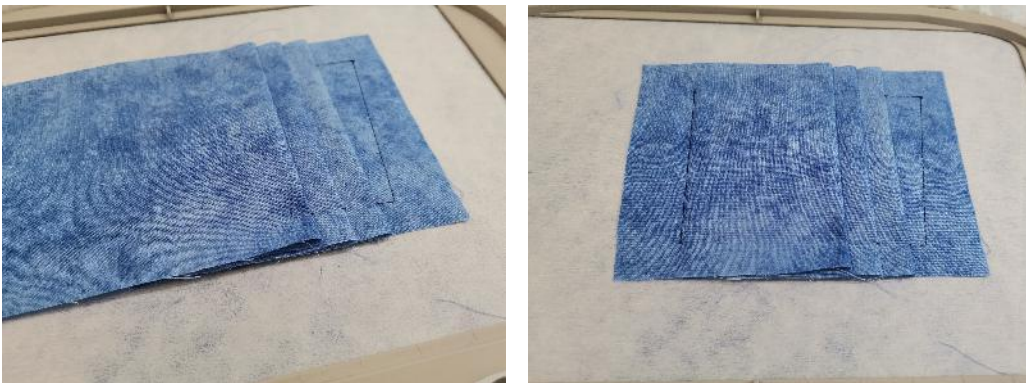
**STEP 6** Fold the strip back towards the bottom of the hoop (wrong sides together). Stitch down the fabric across the bottom.



**STEP 7** Fold the strip up so the right sides are together. Pull the fabric taut against the bottom stitching. Stitch down.



**STEP 8** Fold the strip back towards the bottom of the hoop (wrong sides together). Stitch down the fabric across the bottom.



You will now have three folds to create three pockets.

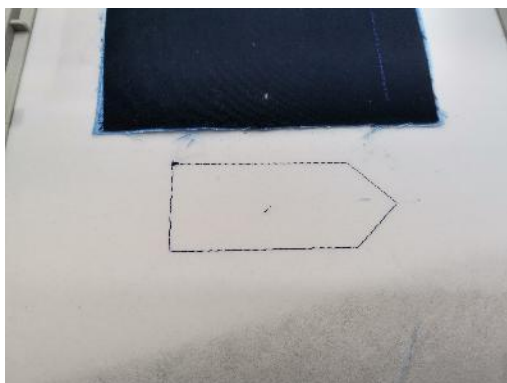


**STEP 9** Place **Fabric B** on top of the hoop, wrong side up, covering all the stitching. Stitch down. It will stitch along the right side and along the top only.



Now we'll stitch the flap.

**STEP 10** Stitch the placement line for the flap.



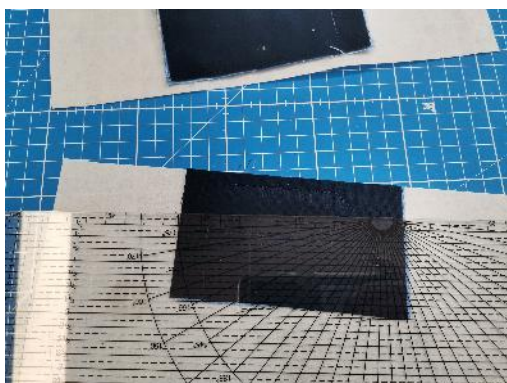
**STEP 11** Place **Fabric C** on top of the hoop **right side** up covering the placement line. Stitch down.



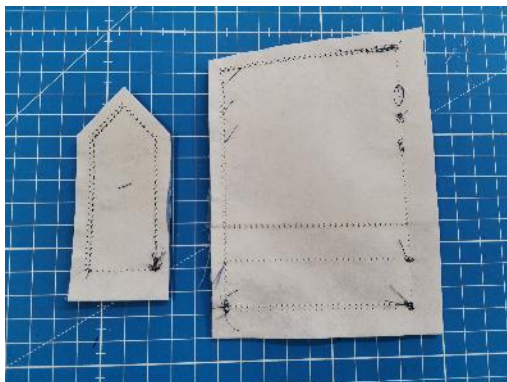
**STEP 12** Place **Fabric D** on top of the hoop **wrong side** up covering the stitching for the flap. Stitch down



Remove from the hoop and remove the excess stabiliser.



Trim the seams to ¼", leaving ½" around the unstitched section on the card pockets and the flap.

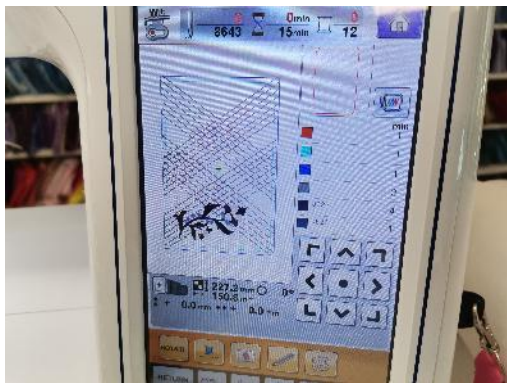


Clip the points and turn the card pockets and flap right side out. Use a chopstick to help push the corners out. Press and hold aside.



**MAKE THE OUTSIDE PANEL**

Hoop **cutaway stabiliser** in the hoop. Load design onto your machine. Use applique scissors for trimming the batting and fabric.



**STEP 1** Stitch the placement line for the batting.



**STEP 2** Place **Batting 1** on top of the hoop. Stitch the batting down.

Remove the hoop from your machine and trim the batting about 1-2mm from the stitching.



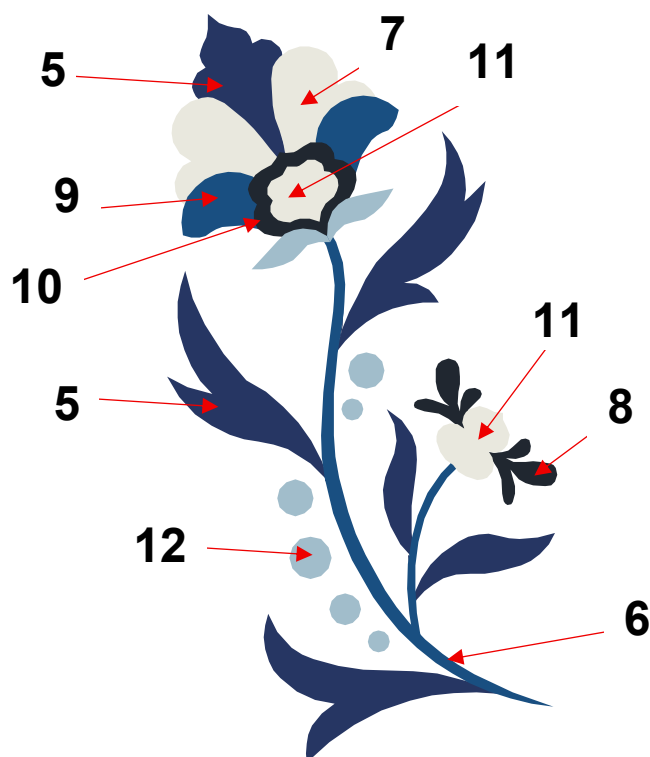
**STEP 3** Place **Fabric A** on top of the hoop **right side** up and stitch down. Do not trim.



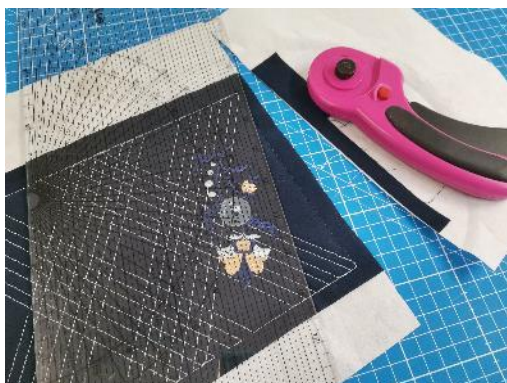
**STEP 4** Embroider the quilting.



**OPTIONAL STEPS 5 - 12** Embroider the flower along the side. The number corresponds to the step number in the file – skip these steps if you don't wish to add the flower.



Remove from the hoop and remove the excess stabiliser. Trim the seams to ½” and set aside.



## **MAKE THE INSIDE PANEL**

Hoop **cutaway stabiliser** in the hoop. Load design onto your machine. Use applique scissors for trimming the batting and fabric.



**STEP 1** Stitch the placement line for the **Fabric A**.



**STEP 2** Place **Fabric A** on top the placement line and stitch down.



**STEP 3** Stitch the notches for the passport pocket.



**STEP 4** Fold **Fabric B** in half, wrong sides together, and place on top of the hoop. Have the fold aligned with the notches and the raw edge facing the top of the hoop. Tape in place and stitch down.



**STEP 5** Stitch the placement line for the flap.



Place the flap on top of the hoop, crossing over the placement line about 1/2" with the raw edge pointing towards the top of the hoop. Tape in place.



**STEP 6** Stitch the flap down.



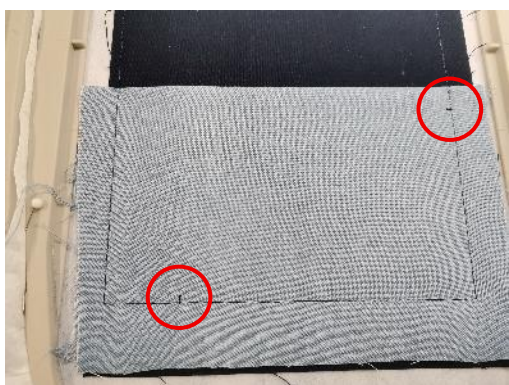
**STEP 7** Stitch the notches for the pocket behind the card pockets.



**STEP 8** Fold **Fabric C** in half with the **wrong sides** together and place on top of the hoop. Have the fold aligned with the notches and the raw edge facing the bottom of the hoop. Tape in place and stitch down.



**STEP 9** Stitch the notches for the card pocket.



Align the card pocket flap with the notches. Tape in place



**STEP 10** Stitch the card pockets down.



**NOW WE WILL ADD THE OUTSIDE PANEL. LEAVE YOUR WORK IN THE HOOP**

Place the **OUTSIDE PANEL** you made earlier onto the hoop **wrong side up**. Line up the back with the front using the stitching line you stitched earlier.



The trick to getting this lined up properly is not to worry about the inside panel of the case underneath. Just focus on the outside panel of the case which has been placed **wrong side up** on top of the hoop. The outside panel stitching should be slightly inside of the stitching on the inside panel, if lined up properly. Move the outside panel until the needle is just inside the stitching at the corner (you may need to raise the foot height). Tape in place.



**STEP 11** Stitch the basting stitch seam. Remove tape.



**STEP 12** Stitch down **again** with the triple stitch (it will leave a gap; this is so we can turn the wallet out the right way later).



Remove your work from the hoop. Trim your seams to about 1/4", leaving about 1/2" of fabric along the opening. Clip the corners.



Unpick the basting stitch along the opening of the wallet (gap left in the triple stitch) to open the hole to turn through. Turn through the opening and use a chopstick or That Pink Thang to push out the corners. Remove any loose threads.



Press.



Add a Kam snap to the inside of the back cover (to match the Kam on the strap). Add the Kam snap on the strap first and then close the cover to mark the position on the back cover for the remaining snap. Don't make the strap too tight as once the project has cards and a passport/s in it, it will get thicker.

**OPTIONAL:** Use adhesive spray inside the wallet so that it has a neat finish.



Hand stitch or use fabric glue to close the opening.



Press.





You have now finished your Passport Cover. Enjoy!