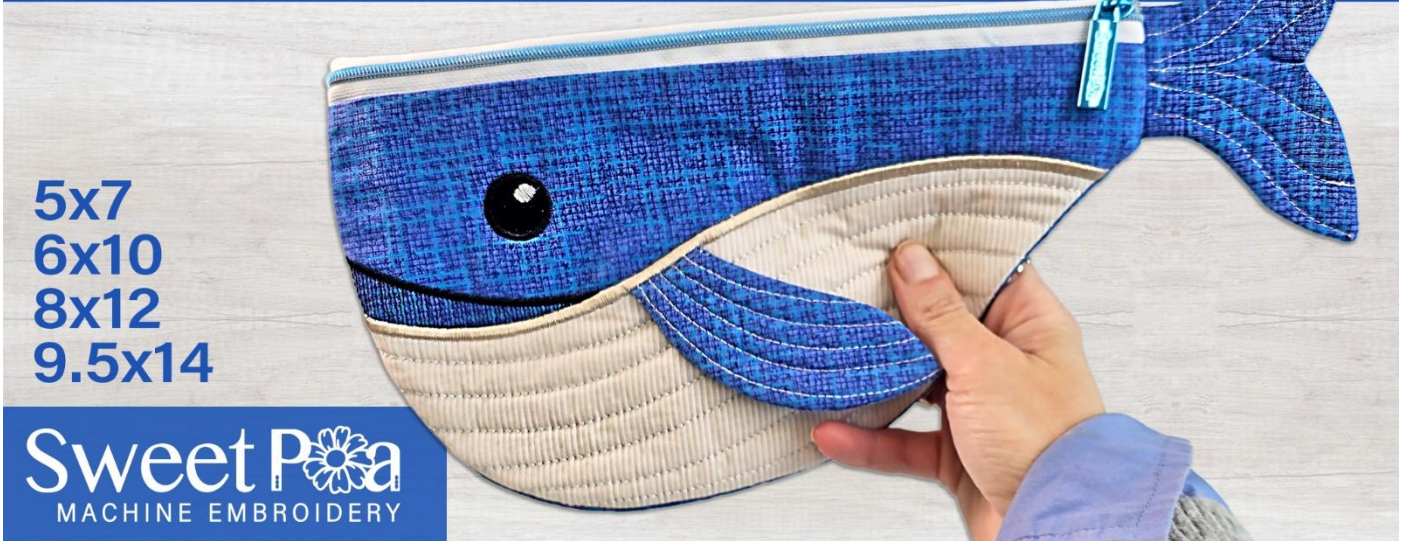


Whale Zipper Purse



5x7
6x10
8x12
9.5x14

Sweet Pea
MACHINE EMBROIDERY

Whale Zipper Purse 5x7 6x10 8x12 and 9.5x14 Instructions

FABRIC REQUIREMENTS

5x7 (13cm x 18cm) Hoop

FLIPPER & TAIL

Fabric A - 14cm x 9cm (5.5" x 3.5") front of tail

Fabric B - 14cm x 9cm (5.5" x 3.5") back of tail

Fabric C - 14cm x 9cm (5.5" x 3.5") front of flipper

Fabric D - 14cm x 9cm (5.5" x 3.5") back of flipper

Batting 1 – 13cm x 17cm (5" x 6.5")

WHALE CASE

Fabric A - 9cm x 23cm (3.5" x 9") top of whale

Fabric B - 12cm x 23cm (4.5" x 9") belly of whale

Fabric C - 18cm x 23cm (7" x 9") backing

Lining 1 - 14cm x 23cm (5.5" x 9") lining bottom part of zipper

Lining 2 - 18cm x 23cm (7" x 9") back lining

1 x Nylon dress zipper - 23cm (9") or longer and least 1" (2.5cm) in width or larger

Batting 1 – 18cm x 23cm (7" x 9") front

OPTIONAL: Batting 2 – 18cm x 23cm (7" x 9") back

REST OF THE BAG

OPTIONAL: Fabric E – 5cm x 15cm (2" x 6") loop fabric – depending on D-ring size

OPTIONAL: Fabric F – 5cm x 132cm (2" x 52") main strap fabric

Or store bought strap

6x10 (16cm x 26cm) Hoop

FLIPPER & TAIL (CAN BE MADE IN THE 5x7 HOOP)

Fabric A - 15cm x 15cm (6" x 6") front of tail

Fabric B - 15cm x 15cm (6" x 6") back of tail

Fabric C - 15cm x 15cm (6" x 6") front of flipper

Fabric D - 15cm x 15cm (6" x 6") back of flipper

Batting 1 – 20cm x 30cm (8" x 12")

WHALE CASE

Fabric A - 13cm x 30cm (5" x 12") top of whale

Fabric B - 13cm x 28cm (5" x 11") belly of whale

Fabric C - 20cm x 30cm (8" x 12") backing

Lining 1 - 18cm x 30cm (7" x 12") lining bottom part of zipper

Lining 2 - 20cm x 30cm (8" x 12") back lining

1 x Nylon dress zipper - 25cm (10") or longer and least 1" (2.5cm) in width or larger

Batting 1 – 20cm x 30cm (8" x 12") front

OPTIONAL: Batting 2 – 20cm x 30cm (8" x 12") back

REST OF THE BAG

OPTIONAL: Fabric E – 5cm x 15cm (2" x 6") loop fabric – depending on D-ring size

OPTIONAL: Fabric F – 5cm x 132cm (2" x 52") main strap fabric

Or store bought strap

8x12 (20cm x 30cm) Hoop

FLIPPER & TAIL (CAN BE MADE IN THE 6x10 HOOP)

Fabric A - 19cm x 12cm (7.5" x 4.5") front of tail

Fabric B - 19cm x 12cm (7.5" x 4.5") back of tail

Fabric C - 19cm x 13cm (7.5" x 5") front of flipper

Fabric D - 19cm x 13cm (7.5" x 5") back of flipper

Batting 1 – 15cm x 21cm (6" x 8.5")

WHALE CASE

Fabric A - 13cm x 35cm (5" x 14") top of whale

Fabric B - 18cm x 35cm (7" x 14") belly of whale

Fabric C - 25cm x 35cm (10" x 14") backing

Lining 1 - 20cm x 35cm (8" x 14") lining bottom part of zipper

Lining 2 - 25cm x 35cm (10" x 14") back lining

1 x Nylon dress zipper - 35cm (14") or longer and least 1" (2.5cm) in width or larger

Batting 1 – 25cm x 35cm (10" x 14") front

OPTIONAL: Batting 2 – 25cm x 35cm (10" x 14") back

REST OF THE BAG

OPTIONAL: Fabric E – 5cm x 15cm (2" x 6") loop fabric – depending on D-ring size

OPTIONAL: Fabric F – 5cm x 132cm (2" x 52") main strap fabric

Or store bought strap

9.5x14 (24cm x 36cm) Hoop

FLIPPER & TAIL (CAN BE MADE IN THE 7x12 HOOP)

Fabric A – 225cm x 15cm (8.5" x 6") front of tail

Fabric B – 22cm x 15cm (8.5" x 6") back of tail

Fabric C - 22cm x 15cm (8.5" x 6") front of flipper

Fabric D - 22cm x 15cm (8.5" x 6") back of flipper

Batting 1 – 22cm x 27cm (8.5" x 10.5")

WHALE CASE

Fabric A - 17cm x 35cm (6.5" x 14") top of whale

Fabric B – 22cm x 35cm (8.5" x 14") belly of whale

Fabric C - 29cm x 35cm (11.5" x 14") backing

Lining 1 - 25cm x 35cm (10" x 14") lining bottom part of zipper

Lining 2 - 29cm x 35cm (11.5" x 14") back lining

1 x Nylon dress zipper – 21.5cm (14") or longer and least 1" (2.5cm) in width or larger

Batting 1 – 29cm x 35cm (11.5" x 14") front

OPTIONAL: Batting 2 – 29cm x 35cm (11.5" x 14") back

REST OF THE BAG

OPTIONAL: Fabric E – 5cm x 15cm (2" x 6") loop fabric – depending on D-ring size

OPTIONAL: Fabric F – 5cm x 132cm (2" x 52") main strap fabric

Or store bought strap

Finished Dimensions (approx.) head to tail:

5x7 – 12cmW x 23cmL (4 ½" x 9")

6x10 – 15cmW x 32cmL (6" x 12 ½")

8x12 – 19cmW x 37cmL (7 ½" x 14 ½")

9.5x14 – 23cmW x 44cmL (9" x 17 ½")

NOTE: If you have decided to make this project with Leather, Faux Leather, Vinyl, Cork, PVC (clear plastic) or any combination of these, please refer to our guide with extra tips on how use these materials here - <https://swpea.com.au/blogs/machine-embroidery-blogs/tips-when-using-pu-leather-in-machine-embroidery>

Sweet Pea Machine Embroidery Designs Design Files Disclaimer-

Please note to customers who use embroidery software to open our files. In doing so, you may run the risk of the design not stitching as intended by our digitiser's instructions.

We highly recommend that any design file purchased from us should be downloaded as per our "how to download our designs" instructions on our website and placed directly onto a USB/memory card and then placed directly onto the embroidery machine.

We will not be obligated to provide compensation to customers who have put our files through their software and the resulting stitch out was not as intended.

INSTRUCTIONS

USING YOUR EMBROIDERY MACHINE:

For tips on how to correctly hoop your stabiliser, go to <https://swpea.com/blogs/machine-embroidery-blogs/tips-for-stabiliser-in-the-hoop>

OPTIONAL: ATTACHING THE STRAPS AND D-RING LOOPS

Adding the straps and D-Ring Loops to your clutch is completely optional. Skip this section if you do not wish to add these to your clutch.

You will need to cut your fabric as shown below:

1 x Strip of fabric for the bag strap **5cm x 132cm (2" x 52")** - but you can make this any length if you like.

2 x Lobster clasps, if making your own strap

OR 1 x Store bought strap, if not making homemade strap

1 x Loop for D-ring **5cm x 15cm (2" x 6")** or you can use **ribbon** *size depending on the width of the D-Ring.

2 x D-rings

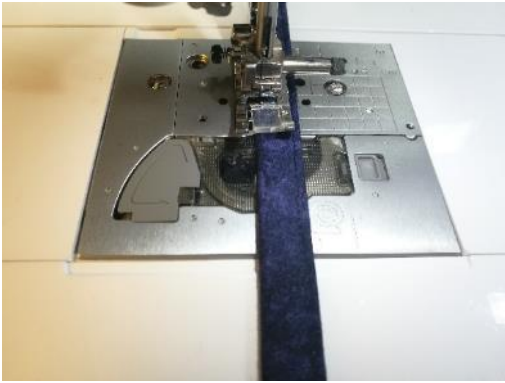
Fold both the edges into the middle crease and iron.



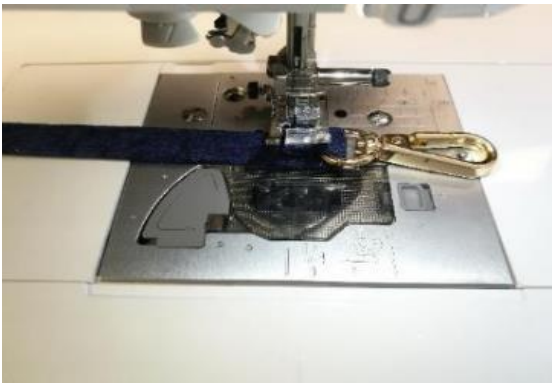
Fold again in half lengthways and iron.



Topstitch along the two long edges. Use a bobbin that is the same colour as your top thread.



If you are using lobster clasps, you can add them to the ends of your strap now.



MAKE THE LOOPS FOR THE SHOULDER STRAP

Below are instructions on how to make the D-ring loops for your bag. You can alternatively use cord or ribbon or leave them off completely if you wish to turn your bag more into a storage case.

Take **Fabric E** and fold in half, widthways, with the wrong sides together. Iron the fold. Unfold.



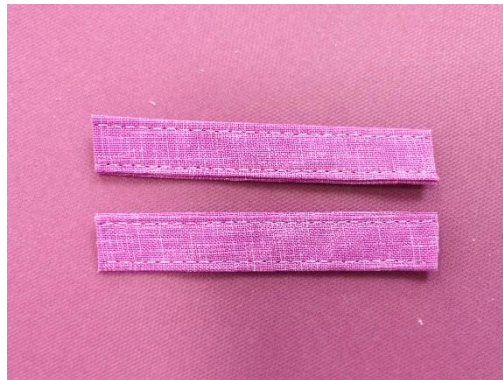
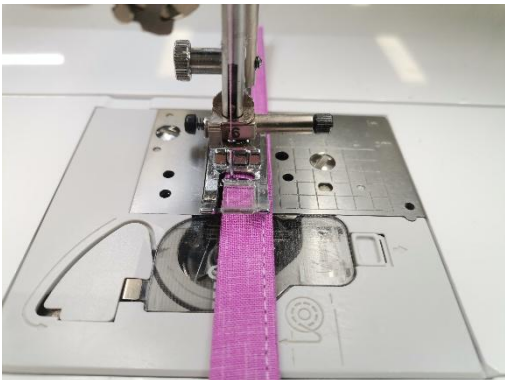
Fold both the edges into the middle crease and iron.



Fold again in half lengthwise. Iron. Clip.



Edge-stitch the edges together; repeat for the other side for a more even look (use a matching bobbin to the top thread). Fold your piece of fabric in half and cut. Now you will have two 3-inch pieces. Fold your piece of fabric in half and then use a pair of scissors to cut the fold



Fold your piece of fabric in half. Put through the D-ring. Stay stitch together. Hold aside.

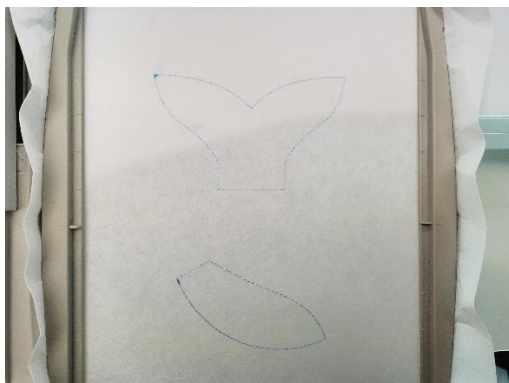


MAKE THE FLIPPER AND TAIL FIRST

Hoop up **cutaway stabiliser** in the hoop. Load the pattern. Use applique scissors to trim the batting and fabric.



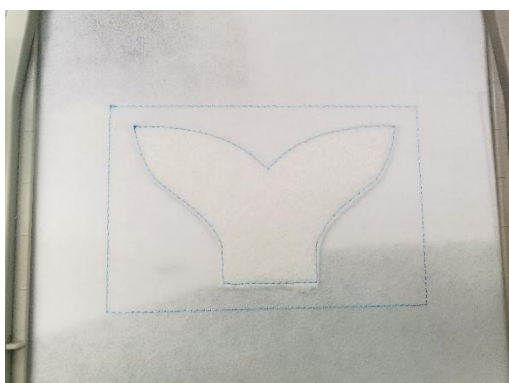
STEP 1 Stitch the placement line for the batting for the tail and flipper.



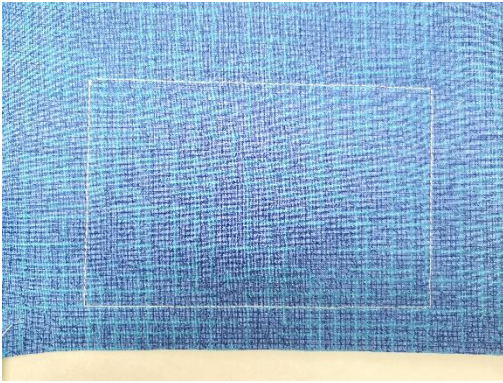
STEP 2 Place **Batting 1** on top of the hoop covering the placement line and stitch down. Remove the hoop from the machine and trim the batting 1-2mm from the stitching.



STEP 3 Stitch the placement line for the tail.



STEP 4 Place **Fabric A** on top of the hoop right side up covering the placement line. Stitch down.



STEP 5 Embroider the detail on the tail.



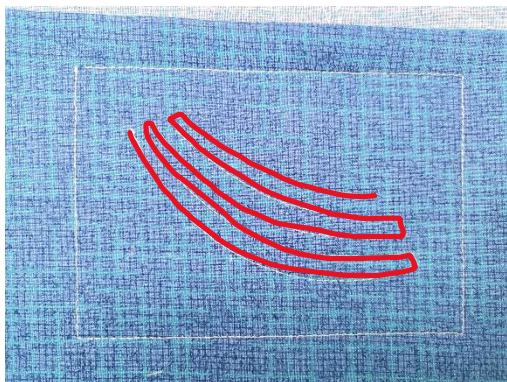
STEP 6 Place **Fabric B** on top of the hoop wrong side up covering all the stitching. Stitch down – it will first do a single run and then end with a triple stitch.



STEPS 7 & 8 Stitch the placement line for the flipper. Then place **Fabric C** on top of the hoop right side up covering the placement line. Stitch down.



STEP 9 Embroider the detail on the flipper.



STEP 10 Place **Fabric D** on top of the hoop wrong side up cover all the stitching. Stitch down – it will first do a single run and then end with a triple stitch.



Remove from the hoop

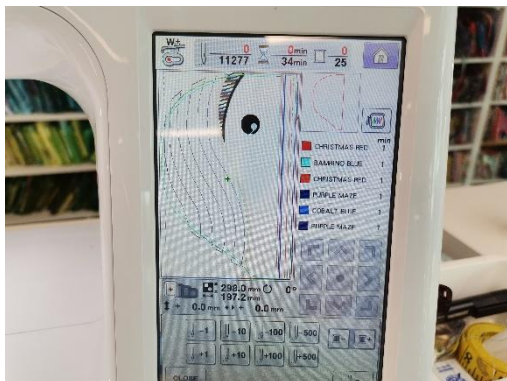
Trim the seams back to $\frac{1}{4}$ " , leaving around $\frac{1}{2}$ " around the openings. Clip along the curves and points. Turn the tail and flipper through right side out from the opening. Use a chopstick to help push it right side out.



Press and hold aside.

WHALE CASE

Hoop up **tearaway OR washaway** in the hoop. Load the pattern for the case body. Use applique scissors to trim the batting and fabric.



STEP 1 Stitch the placement line for the batting.



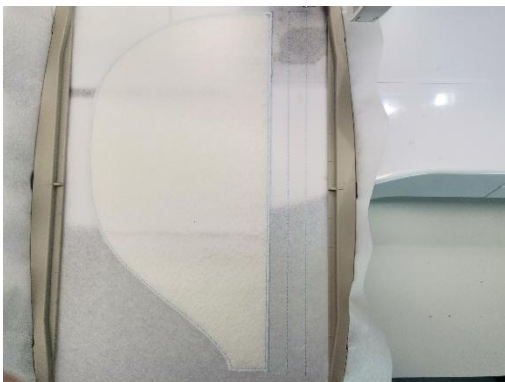
STEP 2 Place Batting 1 on top of the hoop covering the placement line. Stich it down.



Remove the hoop from the machine and trim the batting 1-2mm from the stitching, leaving the excess fabric in the seams



STEP 3 Stitch the placement line for the zipper.



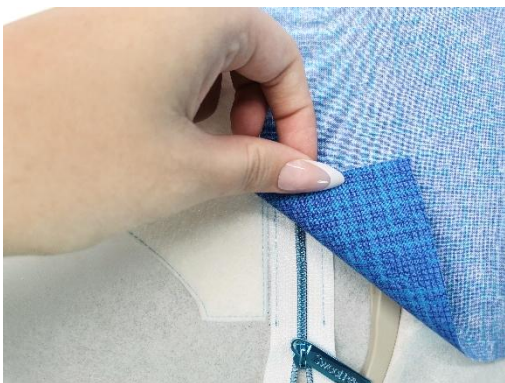
Place the zipper **right side** up centred on the placement line, with the pull hanging past the side of the hoop. The zipper may be too long, but this can be trimmed later when you trim the seam. Tape in place.



STEP 4 Stitch the zipper to the stabiliser. Remove the tape.

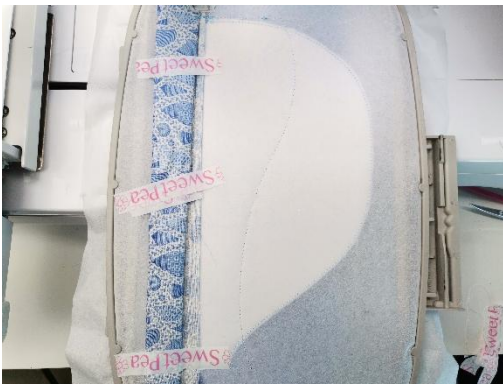
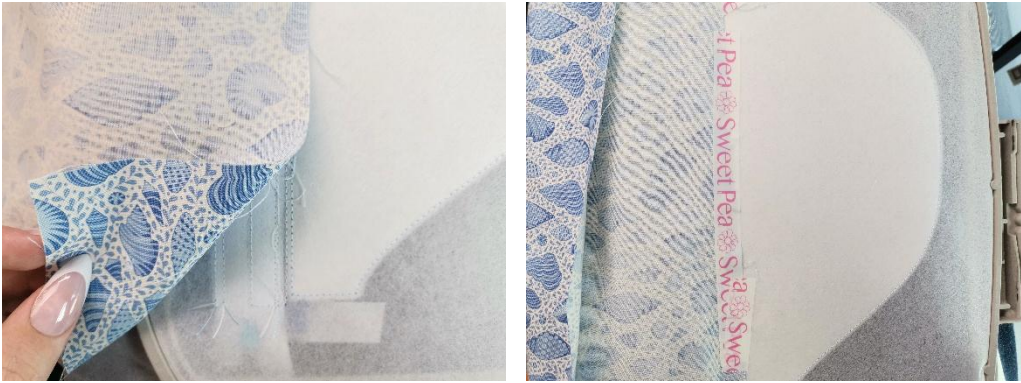


STEP 5 Using the left stitch down of the zipper as a placement line, place **Fabric A** on top of the hoop wrong side up with ¼" crossing over the placement line and the excess pointing towards the right side of the hoop. Stitch down.



Remove the hoop from the machine and **FLIP** it over so the wrong side of the hoop is facing up.

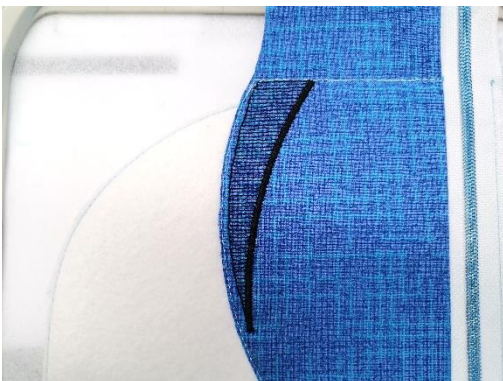
STEP 6 Using the same stitch down of the zipper as a placement line, place **Lining 1** on top of the wrong side of the hoop wrong side up with ¼" crossing over the placement line and the excess will be pointing towards the left side of the hoop. Tape in place. Stitch down. **Keep Lining 1 out of the way.**



STEP 7 Fold over, hold taut and stitch down **Fabric A**. Trim. Leave **Lining 1** in position at this stage.



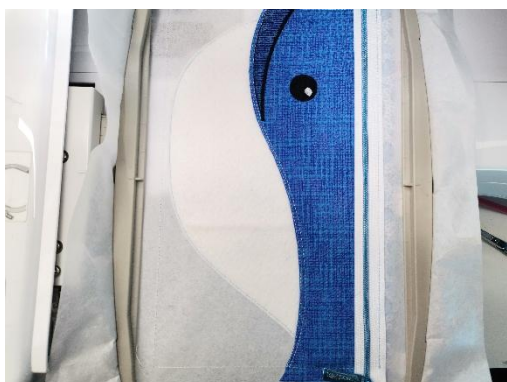
STEP 8 Embroider the mouth



STEPS 9 & 10 Embroider the eye and then the eye shine.



STEP 11 Stitch the placement line for the belly of the whale.



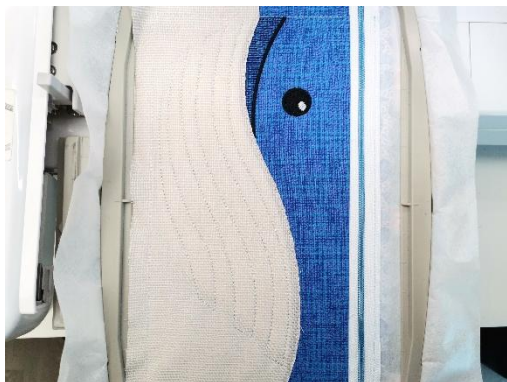
STEP 12 Place **Fabric B** on top of the hoop right side up covering the placement line and stitch down.



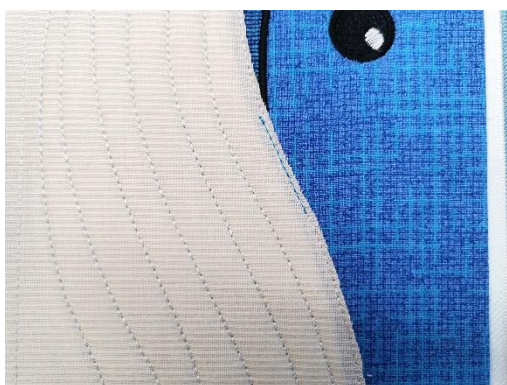
Remove the hoop from the machine and trim the fabric 1-2mm from the stitching, leaving the excess fabric in the seams.



STEP 13 Embroider the detail on the belly.



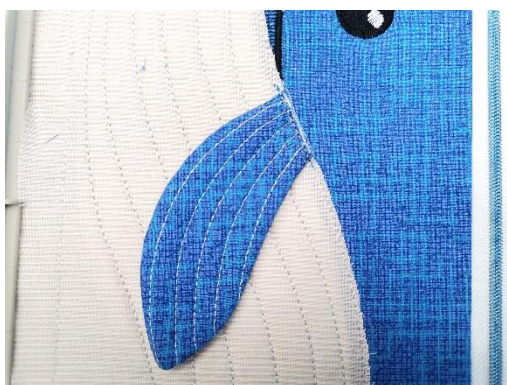
STEP 14 Stitch the placement line for the flipper.



STEP 15 Place the flipper made earlier on top of the placement line with flipper pointing towards the bottom left corner and the raw edge pointing towards the top right corner. Tape in place and stitch down.



Remove the hoop from the machine and trim the raw edge of the flipper back 1-2mm from the stitching,



STEP 16 Embroider the satin stitch along the belly.



Remove the hoop from the machine and flip it over so the wrong side of the hoop is facing up.



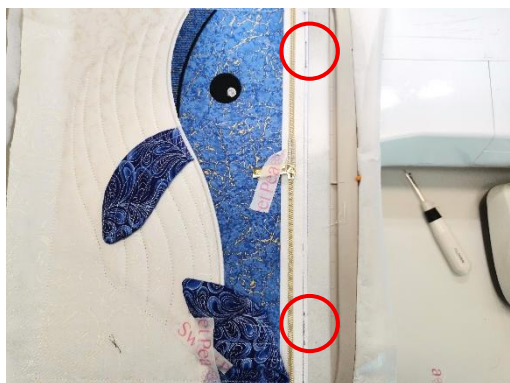
STEP 17 Fold over **Lining 1**, hold taut and tape in place. Stitch down.



OPTIONAL: ADDING THE D-RING LOOPS

The next two steps add the D-Ring loops (made earlier) to the bag. Skip these steps if you don't wish to add loops.

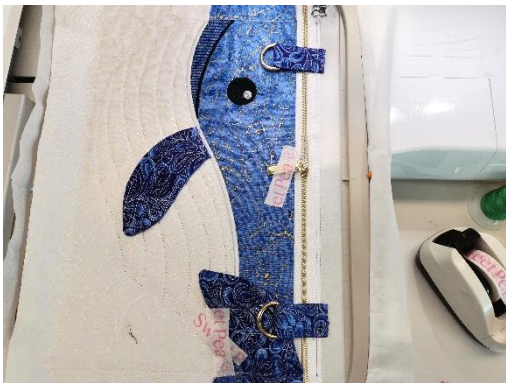
STEP 18 Stitch the placement lines for the loops



Place the loops on top of the placement lines centred with the raw edges facing outside the hoop. Tape in place.



STEP 19 Stitch the loops down. Remove tape.



STEP 20 Stitch the placement line for the tail.



STEP 21 Place the tail made earlier on top of the placement line, wrong side up, with the tail pointing towards inside the hoop – the raw edge should be facing the outside of the hoop. Tape in place and stitch down.



IMPORTANT! MAKE SURE YOU HAVE YOUR ZIPPER A LITTLE MORE THEN HALFWAY OPEN!

We recommend taping down the ends of the zipper where the folds of the fabric meet and the top edge of the pocket panel to keep the embroidery foot from catching the fabric and pulling your panel out of the hoop. We also recommend having the zipper pull pointing towards the bottom of the hoop. Tape down the zipper pull so it does not move and get in the way when we sew together the remainder of the case.



IMPORTANT! Fold the tail in half so it sits within the case so it doesn't get caught in the seams during the final steps.



STEP 22 Place **Fabric C** (back of case) **wrong side up** on the hoop. You can now also place **Batting 2 (optional)** on top of the wrong side of **Fabric C**. Stitch the down.



Trim the excess batting out of the seam.

Remove the hoop from the machine and flip it over so the wrong side of the hoop is facing up. Place **Lining 2 wrong side up** on top of the **wrong side of the hoop** covering all the stitching. Tape in place



STEPS 23 & 24 Stitch fabric down - check fabric stayed in place. Then stitch the seam again, this time it will stitch a triple stitch. Note: You may have to slow your machine speed down and adjust your machine foot height.



STEP 25 NOTE: There will be one more step after the border stitch, **DO NOT** stitch this step, just remove the hoop from the machine and skip this step. This very last step is here so the machine does not move to the centre of the hoop and get caught when finished.

Remove from the hoop, remove tape, and remove any excess tearaway stabiliser you can. (If you used washaway stabiliser, see instructions that follow). You can use your applique scissors to help remove the batting out of the seams as much as possible at this stage if not done earlier.



Trim the seams to about ¼ inch, leaving about ½” at the opening and clip the corners to allow for easy turning.



Now turn the case out through the hole that was left in the stitching. This will take a bit of perseverance. Use That Pink Thing to push out the corners. You will need to hand stitch/glue the opening closed at the top of the case once the case has been turned the second time. To help make a straight edge, fold in the excess fabric at the opening and press flat.



If you used soluble stabiliser, soak the zipper purse in water to dissolve all the stabiliser. Allow to dry.
If you used tear away, remove all the stabiliser, including inside the zipper, and you will see it is possible to turn the case again through the opening of the zipper.



You now need to turn the case again through the zipper. Use That Pink Thang to help push out the corners. You can cut away any loose stitching once the tearaway stabiliser has been removed. Press the case flat. Hand stitch or fabric glue the left opening.



Your whale is now complete! Enjoy!!

